

A person wearing a high-visibility orange and yellow safety vest and a dark jacket is standing on a rocky, barren landscape. The terrain is covered in dark, jagged rocks and sparse, low-lying vegetation. The sky is overcast with grey clouds. The overall scene suggests a rugged, mining-related environment.

EXTENSIVE LAND PACKAGE  
IN AN EMERGING GOLD DISTRICT

Investor Presentation

January 2021

# Forward Looking Statements

This document contains certain forward-looking statements (“FLS”) relating but not limited to the Company’s expectations, intentions, plans and beliefs. FLS can often be identified by forward-looking words such as “emerging”, “goal”, “plan”, “intent”, “estimate”, “expects”, “scheduled”, “may” and “will” or similar words suggesting future outcomes or other expectations, beliefs, plans, objectives, assumptions, intentions or statements about future events, performance or treasury levels. FLS in this presentation also include, but are not limited to, the extent and timing of described programs, such as drilling, geophysics, rock sampling and till sampling. The Company may adjust any work program, drilling or otherwise, described in this presentation as it feels necessary based on results and other operational factors. There can be no guarantee that continued exploration at Kahuna, which is at an early stage of exploration, will lead to the discovery of an economic gold deposit. While the Company believes the boulders described in this presentation are sourced locally for the reasons outlined in this presentation, there can be no certainty that their source is local, or that it will be located on Solstice claims. Geological interpretations are considered FLS and are subject to change based on additional data and/or analysis. Factors that could cause actual results to differ materially from any FLS include, but are not limited to, the future impacts of the COVID 19 pandemic and government response to such pandemic, the ability of the Company to continue exploration at its project in lieu of the pandemic and the risk of future lack of access to the project as a result thereof, delays in obtaining or failures to obtain required governmental, environmental or other project approvals, inflation, changes in exchange rates, fluctuations in commodity prices, delays in the development of projects and other factors. FLS are subject to risks, uncertainties and other factors that could cause actual results to differ materially from expected results.

Assay results from grab samples (boulders and outcrop) are selected samples and are not necessarily representative of the mineralization hosted on the property. Grab sample weights range from 0.5kg to 3kg. Historical costs are in some cases estimates and are subject to inaccuracies.

Potential shareholders and prospective investors should be aware that these statements are subject to known and unknown risks, uncertainties and other factors that could cause actual results to differ materially from those suggested by the FLS. Shareholders are cautioned not to place undue reliance on FLS. By its nature, FLS involve numerous assumptions, inherent risks and uncertainties, both general and specific, that contribute to the possibility that the predictions, forecasts, projections and various future events will not occur. Solstice Gold undertakes no obligation to update publicly or otherwise revise any FLS whether as a result of new information, future events or other such factors which affect this information, except as required by law.

This presentation contains information with respect to adjacent or similar mineral properties in respect of which the Company has no interest or rights to explore or mine. Readers are cautioned that the Company has no interest in or right to acquire any interest in any such properties, and that mineral deposits on adjacent or similar properties are not indicative of mineral deposits on the Company’s properties. Past performance is no guarantee of future performance and all investors are urged to consult their investment professionals before making an investment decision.

Sandy Barham, P.Geo., is the Qualified Person as defined by NI 43-101 standards responsible for reviewing the technical content of this presentation.

# Nunavut Gold Project – Emerging Gold District



886 km<sup>2</sup> property

Next to Meliadine Mine

20+ Drill Ready Targets

Up to 66.7 g/t gold

>\$12MM invested

High Quality Database

Low Maintenance costs

Technical Expertise



- Board and Management aligned with shareholders, **ownership of 34% outstanding shares**
- Strengthened balance sheet

	(million)
Shares	99.5
Issued and outstanding	
Warrants	43.9
Average strike price \$0.15	
Options	11.0
Average strike price \$0.19	
Shares fd	154.1
Working Cap	\$1.3

*Estimated as of January 1, 2021*

# Experienced, Aligned, Successful Leadership Team

## **David Adamson, Ph.D. – Chairman, Director**

30+ years wide range of experience from advanced exploration through to development. Co-winner of 2010 Colin Spence award for excellence in worldwide exploration. Raised over \$500 million in equity. Most recently CEO of NewCastle Gold – 4MM oz currently in development.

## **Marty Tunney, P.Eng. – President**

15+ years mining industry experience including Mining Engineer, Investment Banking and Executive formerly with CIBC, Raymond James, Placer Dome, Vale (Inco), Newmont, NewCastle Gold – 4MM oz currently in development.

## **Sandy Barham – Senior Geological Consultant**

30+ years. On team that completed first diamond drill program on Agnico Eagle's Meadowbank deposit, identified the potential of Amaruq, saw the Meliadine project establish a 5 million ounce global resource prior to the Comaplex sale to Agnico Eagle.

---

## **Kevin Reid – Lead Independent Director**

18+ years experience Investment Banking. Currently Managing Partner of Maxit Capital, formerly with GMP. Wide range of M&A and advisory experience including multi-billion dollar M&A transactions and billions of dollars of equity raised.

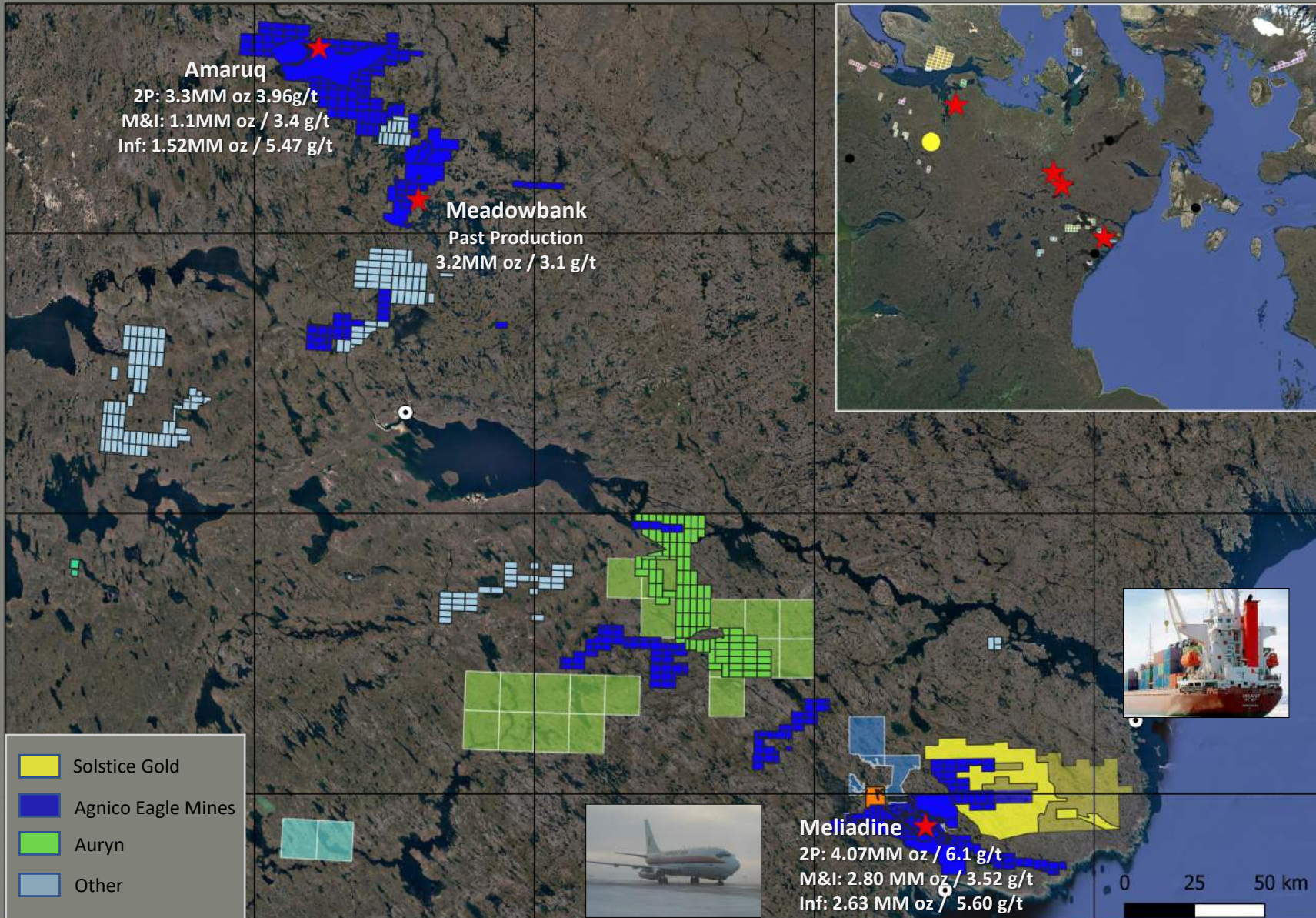
## **Blair Schultz– Independent Director**

20+years of experience in financial, operational, project finance and capital markets experience. currently Interim President and CEO of Eastmain Resources Inc. Formerly Chairman and Interim CEO of 1911 Gold Corporation, currently a Director. Prior Boards Ring the Bell Capital Corp (now Arizona Metals Corp.), Klondex Mines Ltd, OK2 Minerals, and VMS Ventures Inc. 13 years with K2 and Associates Investment Management Inc..

## **Michael Gentile – Independent Director**

17+ years of experience. Formerly a professional money manager (resource focus) at Formula Growth Limited, growing the fund to over \$650 million by the end of 2018. Currently owns significant stakes in several small-cap mining companies and is currently a strategic advisor to Radisson Mining Resources and a board member of Roscan Gold Corporation and Northern Superior Resources.

# Nunavut – Pro-Mining, Secure and Accessible



Meliadine - World Class Deposit

Emerging producing region

Most belts staked

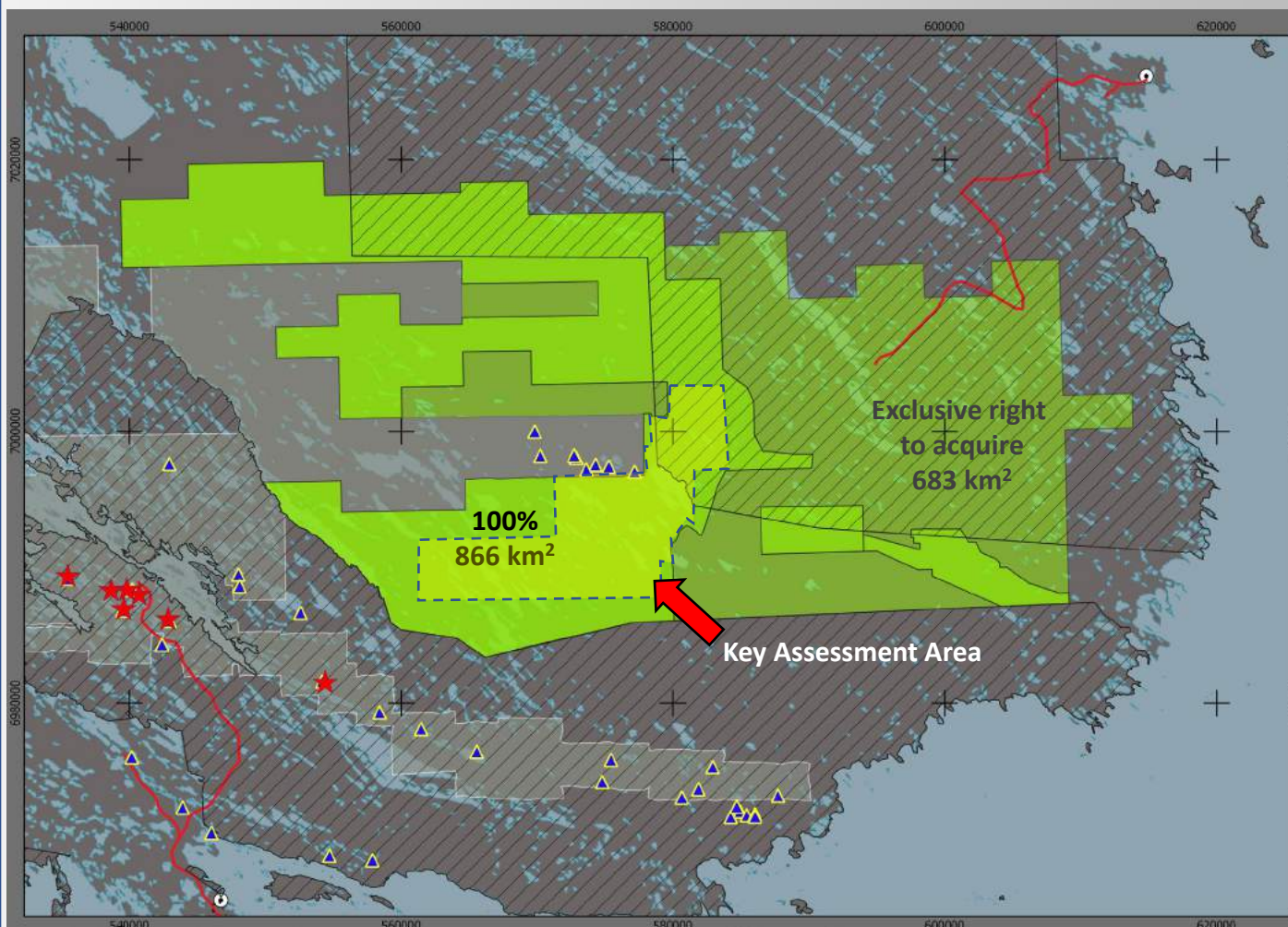
Three landholders regionally

Two landholders Meliadine area

Mining >25% of Nunavut GDP

Rankin Inlet – air and sealift

# 866 km<sup>2</sup> of Near Mine Exploration



Adjacent to Agnico claims, 15 km from mine

No underlying payments

Key area assessment covered for 20+ years

Pre-production 4% NSR buydown to 2% (C\$4M)

Can acquire rights on adjacent 683 km<sup>2</sup>

Rankin Inlet – air and port only 26 km

Road through project in planning stage

\*Solstice has no interest or rights in adjacent properties and there is no certainty that similar mineral deposits occur on Solstice claims.

\*\*Nunavut is in the process of moving to map-staking, this assessment number assumes all existing expenditures on claims are accepted by the Mining Recorders Office.

*Primary Rights include all mineral rights for non-diamond and gemstones excluding minerals found in kimberlite. Dunnedin Ventures holds Secondary Rights on this ground. Secondary Rights give the holder the right to propose exploration programs on the property related to their mineral rights. Such programs are granted at the discretion of the Primary Rights holder. Agreement allows exclusive right for the parties to exchange rights on their respective claims. For additional details please see the Solstice 2017 NI 43-101 Technical Report available on [www.sedar.com](http://www.sedar.com).*

## The Target : What are we looking for and why?

- World Class Meliadine Type Gold Deposit (~10MM Oz)
- Iron Formation + Splays of Major Faults
- Weak to strong EM conductors – associated with sulphides
- Other examples – Meadowbank (3.2MMOz past production) Musselwhite (>5MM Oz) Amaruq (5.9MMOz)

**Total cash costs in the \$700-800/oz range. Average grade 6.7 g/t**

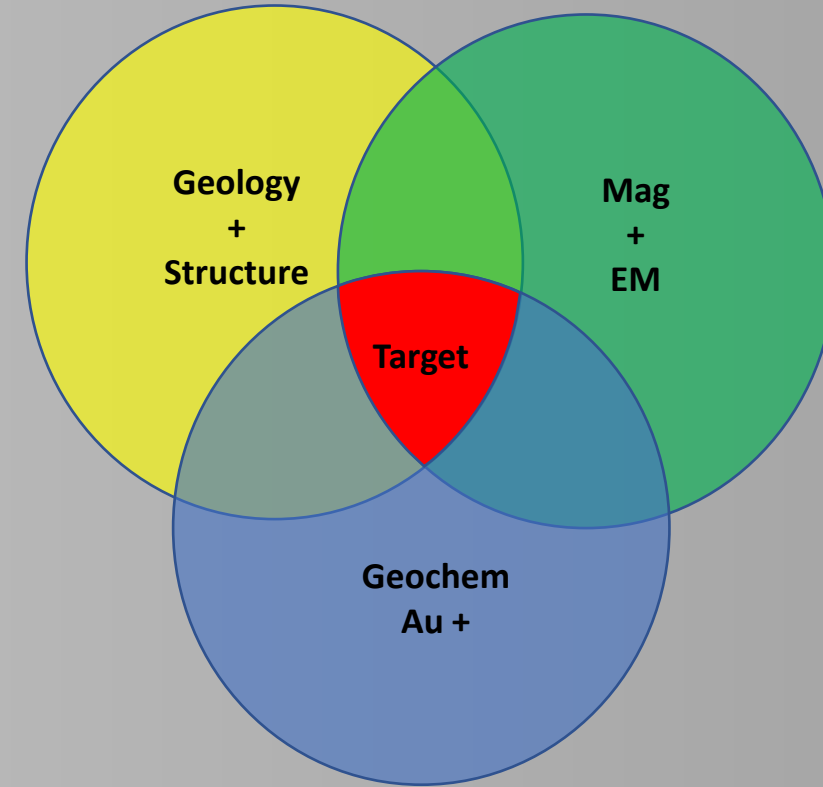
**Model is very well known. Initial discovery- boulder tracing.**

**Deposit type shows good continuity versus some lode gold**

**Meliadine is a District at its very earliest stages of discovery and development and we own 40% of it. Safe jurisdiction.**

**We can demonstrate we have high prospectivity, the same rocks, same structures and widespread gold in the same setting. Main area drill ready, other areas near drill ready.**

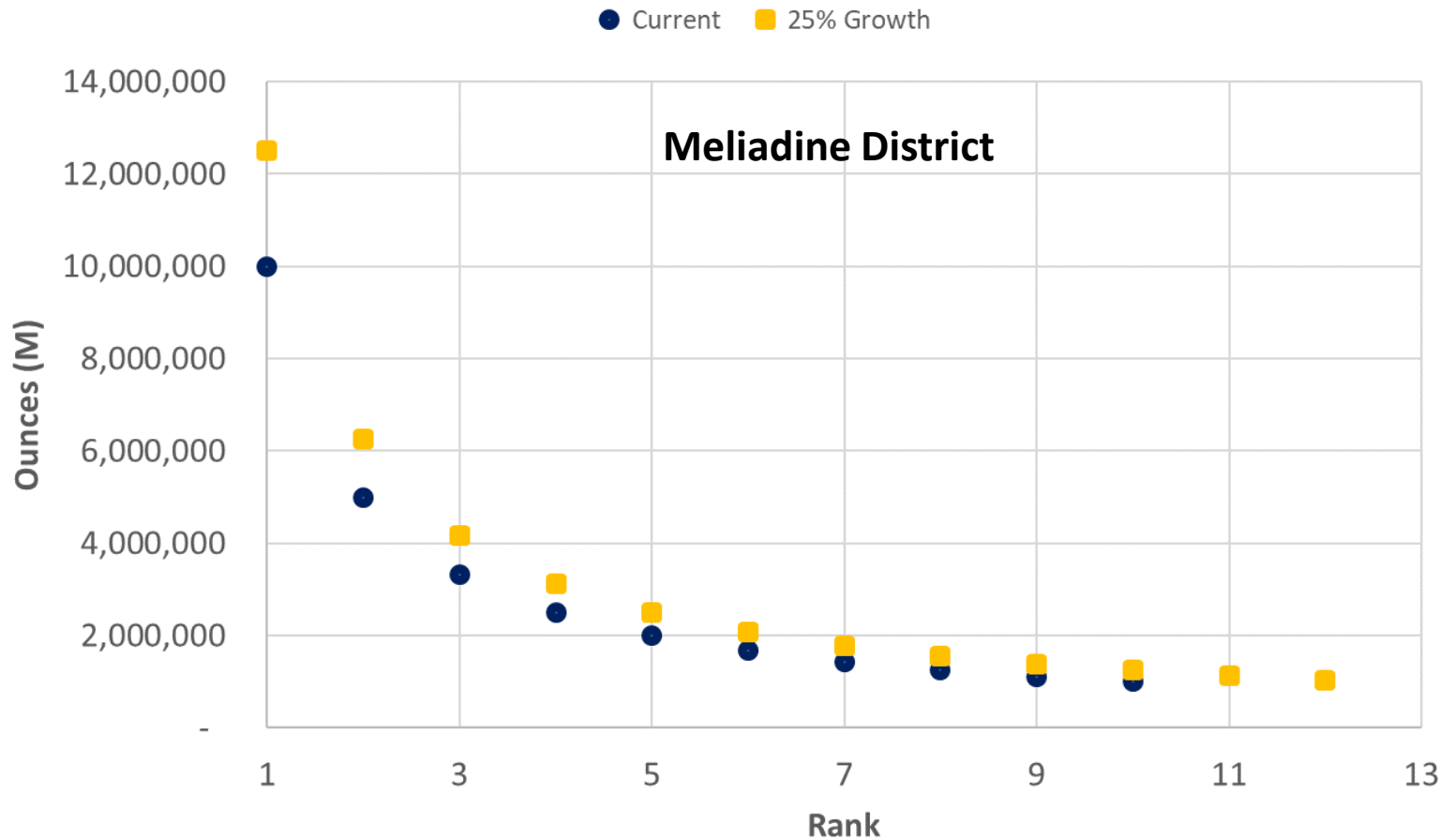
**"RPA is of the opinion that KGP is a very attractive, early stage exploration project with good potential to host significant gold mineralization and warrants a continued systematic exploration effort including a significant drilling component." New 43-101**





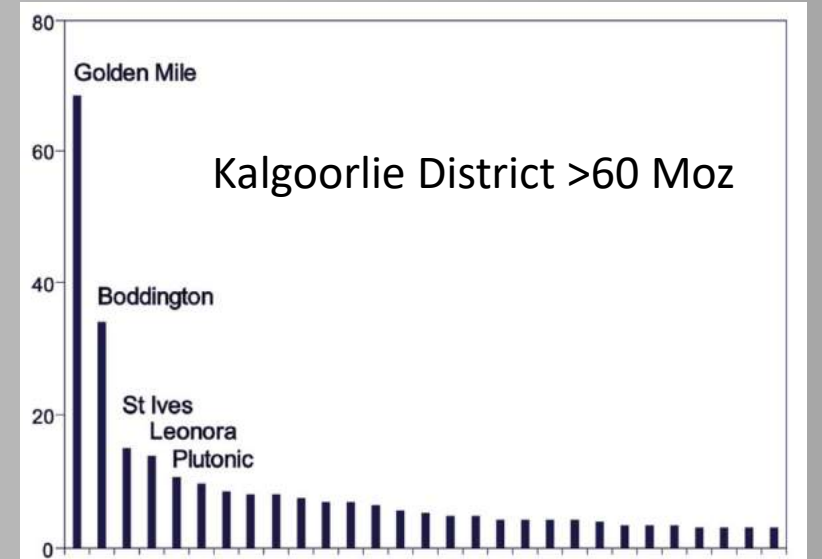
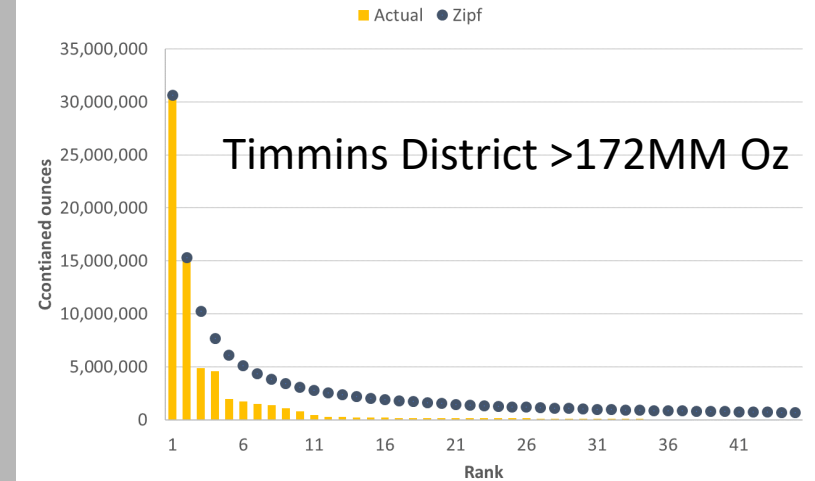
# Potential Gold Endowment – Meliadine District

## Potential Gold Endowment >1M oz In the RGB Using Zipf's Law



Predicts 19-26MM Ozs if Meliadine is largest deposit ever found  
We have about 40% of this potential (7.6-10.4M Ozs)

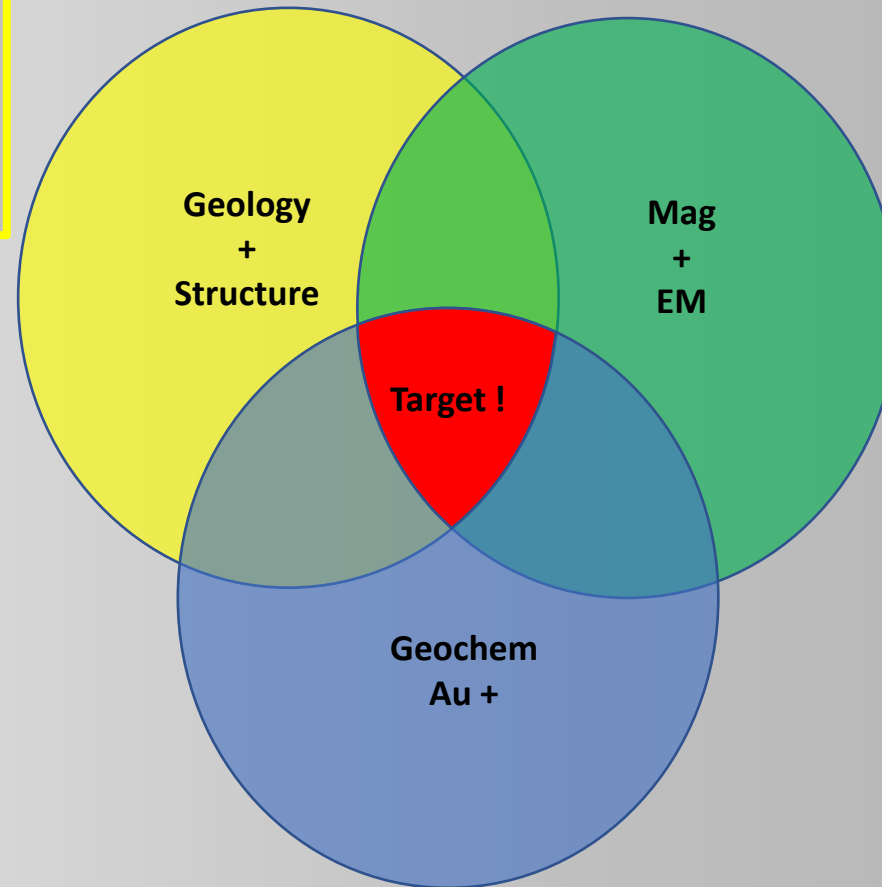
## Zipf Curve Versus Actual Gold Endowment Timmins



**Geology map provides critical foundation**

Mapping and EM shows structures

Right rocks + structure = target



**Mag finds Iron Formation**

Iron Formation main but not only host for gold

Reduced Mag in Iron Formation = alteration

Alteration + EM = sulphides

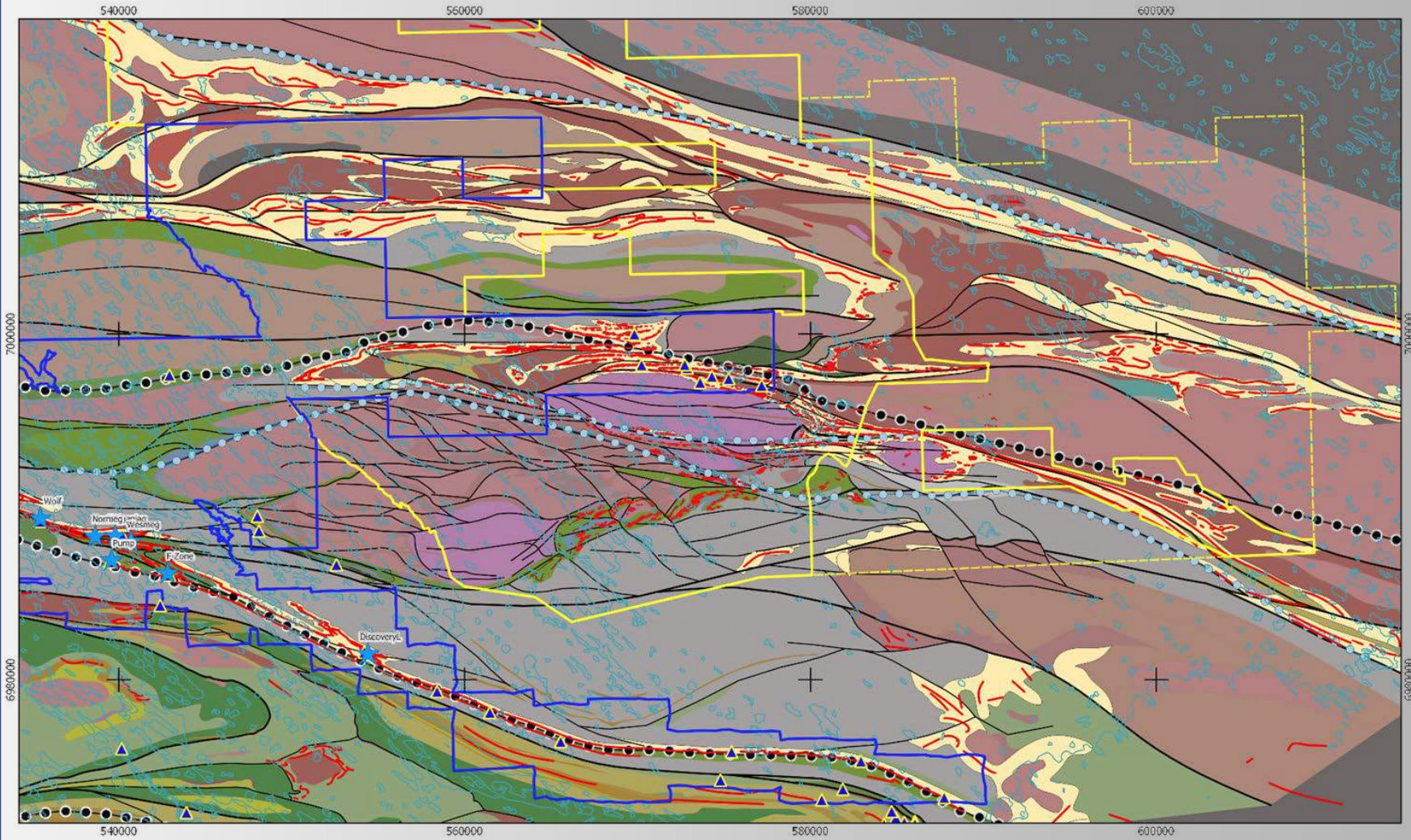
Meliadine and Amaruq have variable EM responses

**Gold in Rocks and boulders – that's what found Meliadine**

Gold in Tills leads to finding gold in rocks... if we know transport distance – (we do)

Multi-element analysis finds pathfinders

# First-Time Compilation of Entire Meliadine Gold District



Several regional Pyke-like first order structures

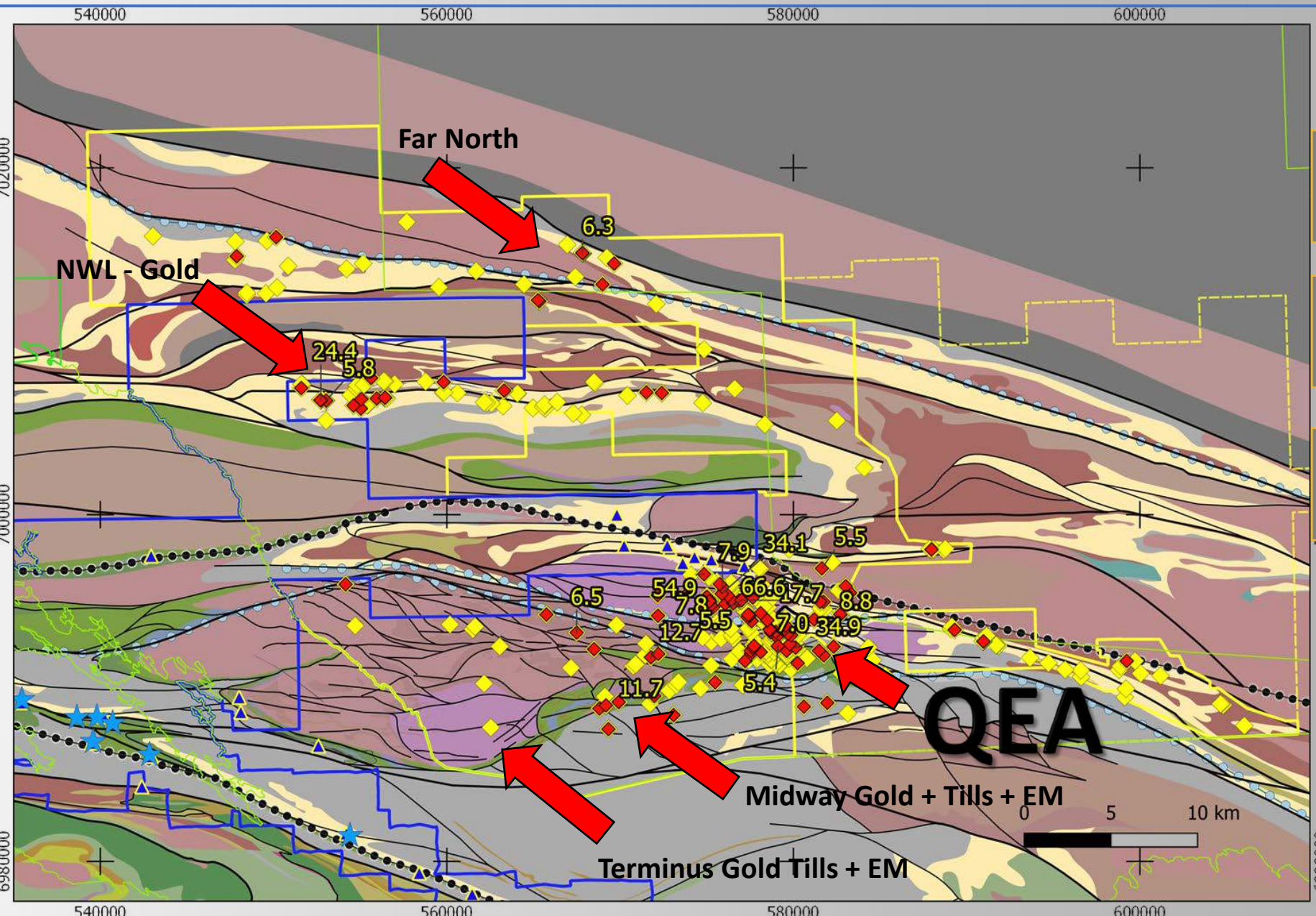
Prospective Upper Oxide Formation extends across the region

Secondary faults in prospective units are key targets

- Iron Formation
- Upper Oxide Formation
- Regional Faults
- Major Faults
- Secondary Faults

Sandy Barham (ex-Comaplex, now Solstice Gold) authored mapping and compilation work on adjacent claims, now extended over the entire district

# Widespread Gold and Camp-scale Drill Targets Across the KGP



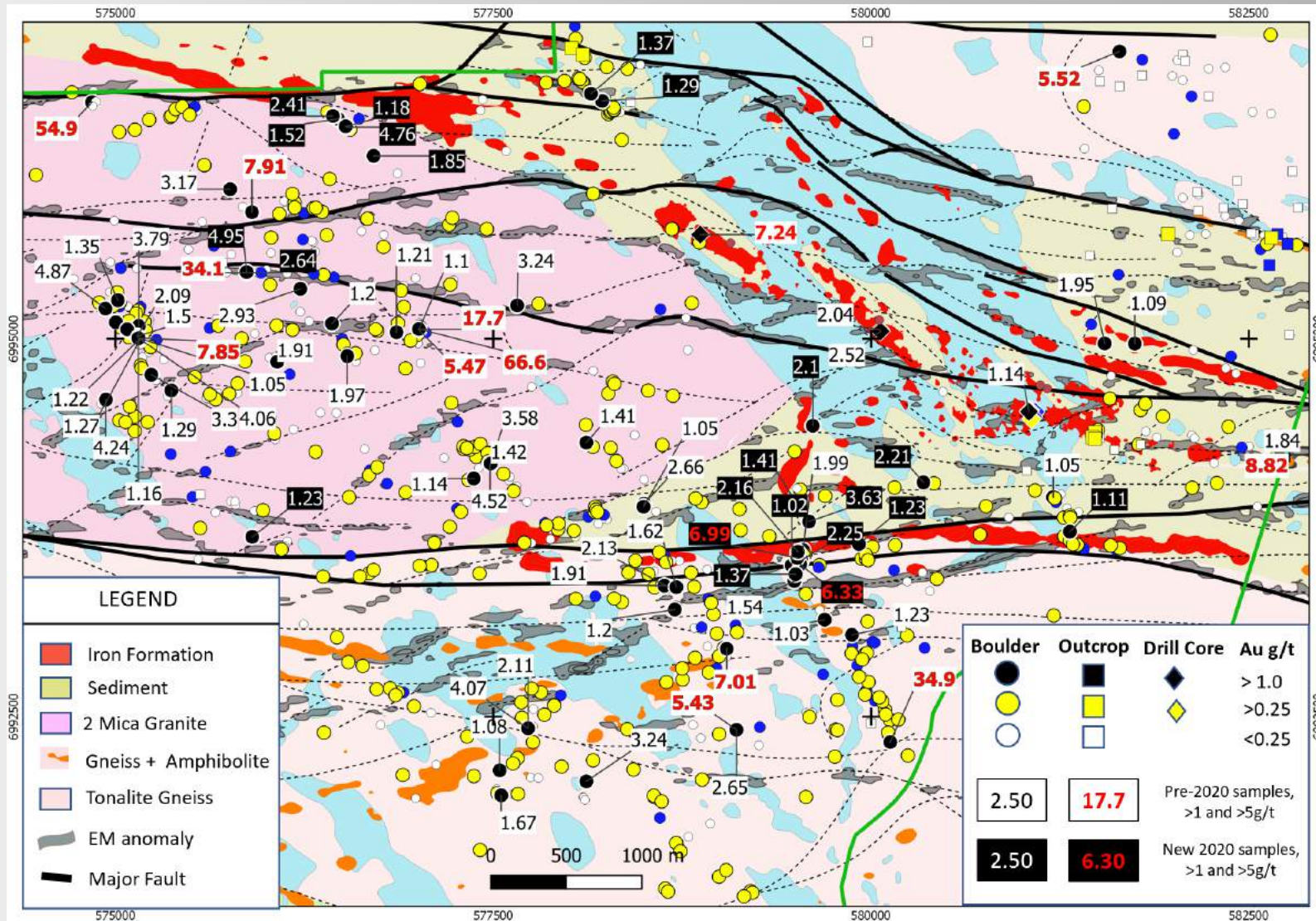
Gold widespread over KGP in key units as model predicts

20+ drill-ready targets

Multiple secondary and tertiary targets to advance

- ◆ >1 g/t gold
- ◆ >0.26 g/t gold (90%ile)

# QEA – Anatomy of a Boulder Field



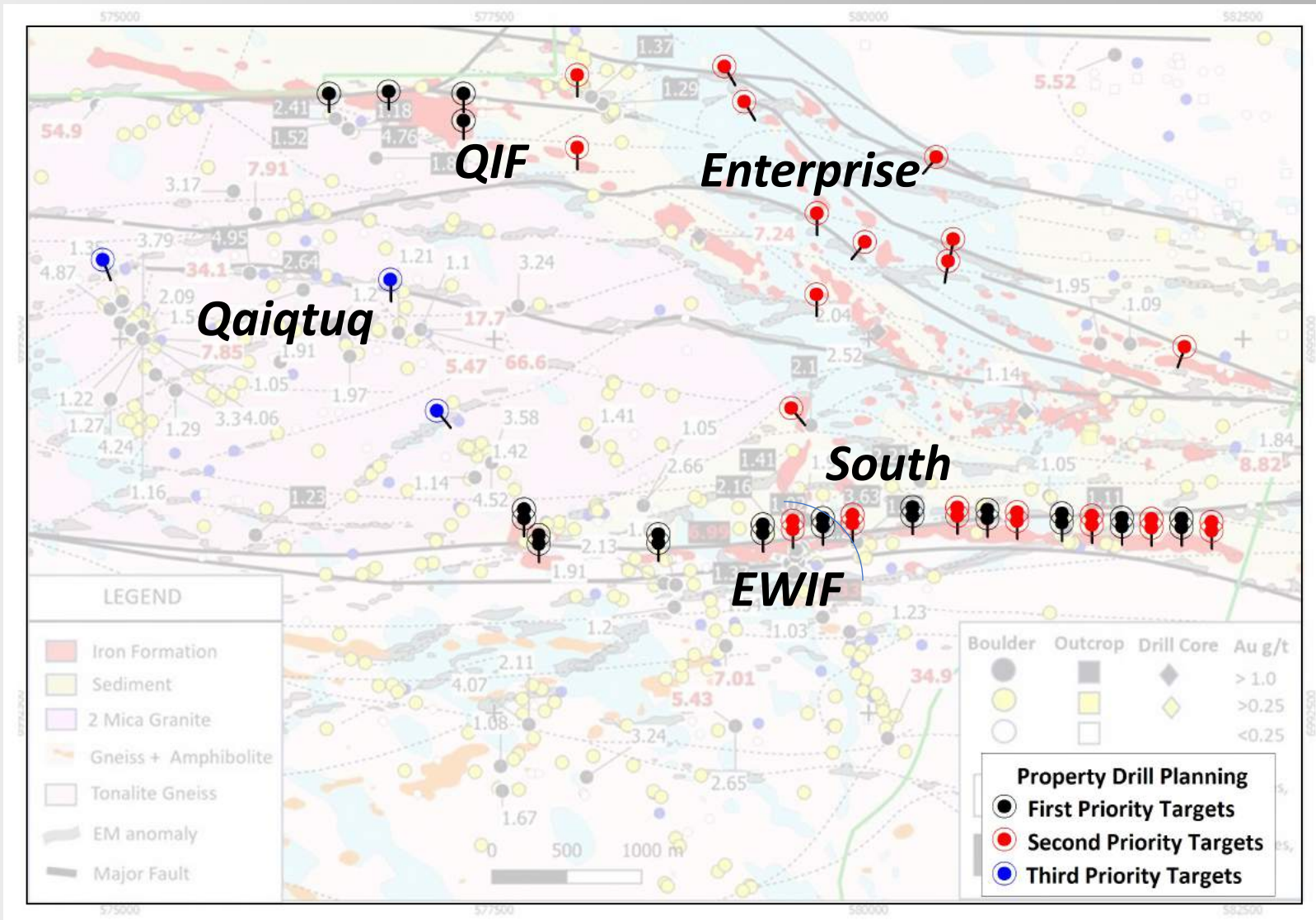
40 km<sup>2</sup> boulder field. Arrow contain locally sourced sedimentary boulders

Qaiqtuq underlying rock type does not match boulders but boulders track EM

EM features are faults – 50m-wide gulleys. Splays of regional RWFZ

Agnico's Amaruq Mine (5.9mm oz) discovered by boulders - similar scale

# DRILL READY TARGETS

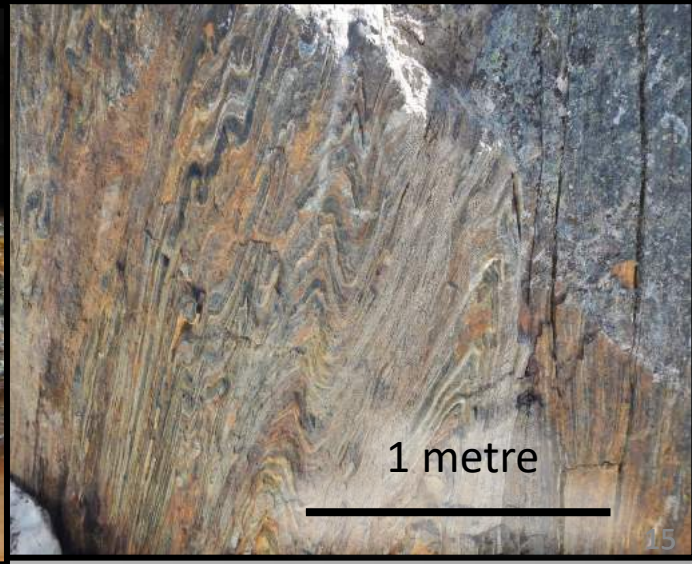
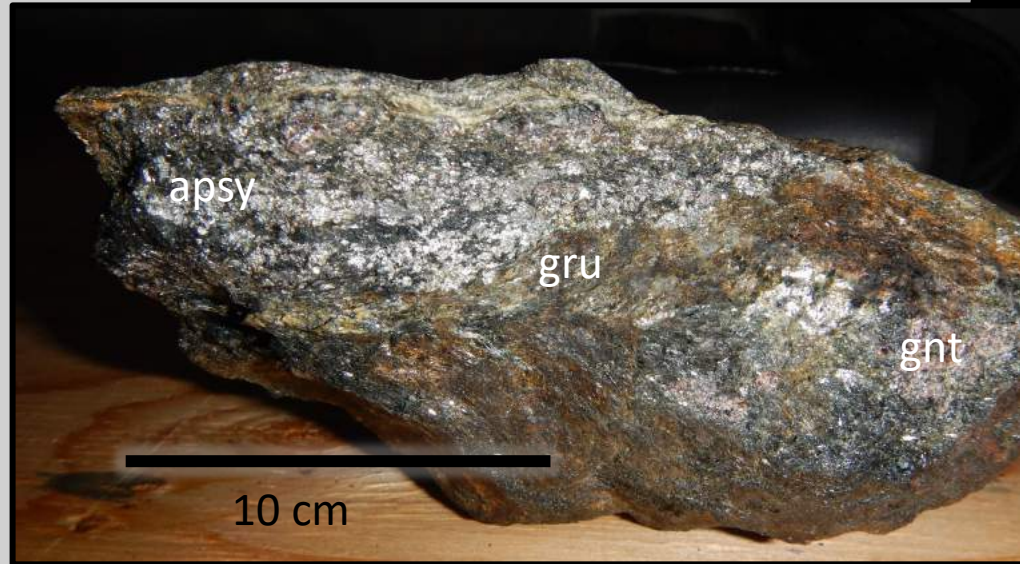
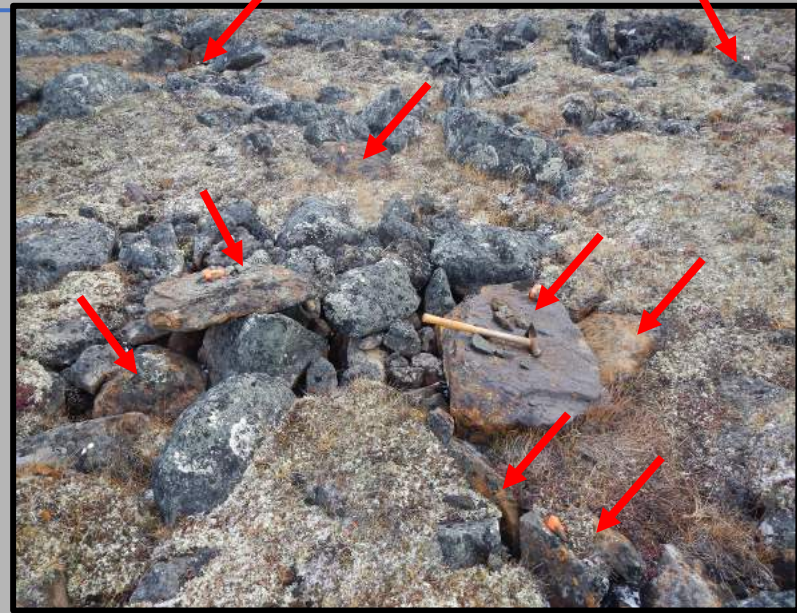


Over 15km strike length of targets –all with proximal boulders except lake (Enterprise)

Targets have associated magnetic and EM anomalies

Priority targets ~8,000m

# Qaiqtuq Boulders



# Other Target Areas – District Scale

## Northwest Limb:

Widespread gold up to 24.4 g/t gold in outcrop, extensive iron formations. Large target >10km required follow up mapping

## Calzone:

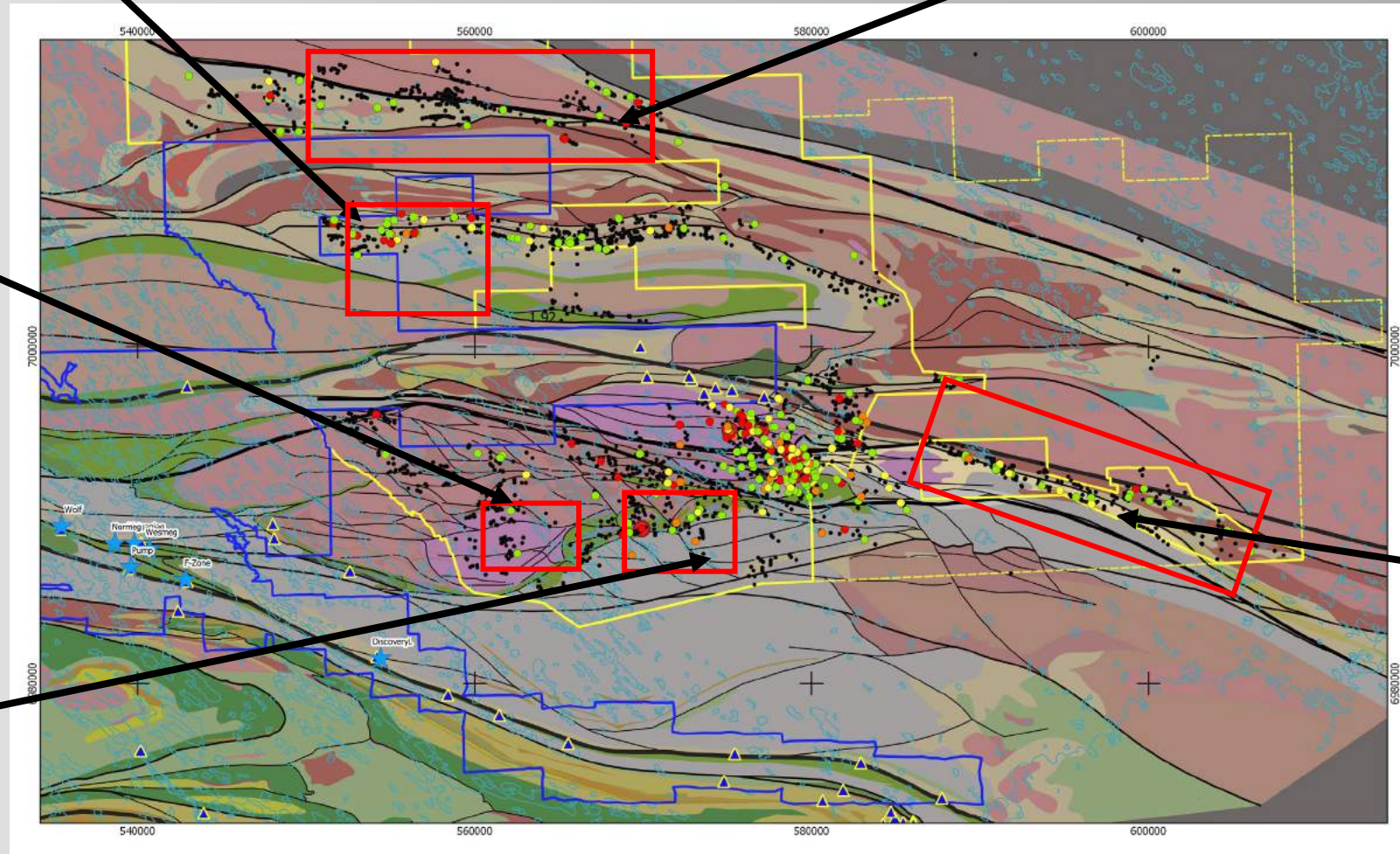
Associated with major regional structure, up to 6.3 g/t Au and elevated Arsenic. Mapping and sampling required

## Terminus:

Moderately strong EM with EM cutting iron formations plus anomalous tills define drill-ready targets.

## Midway:

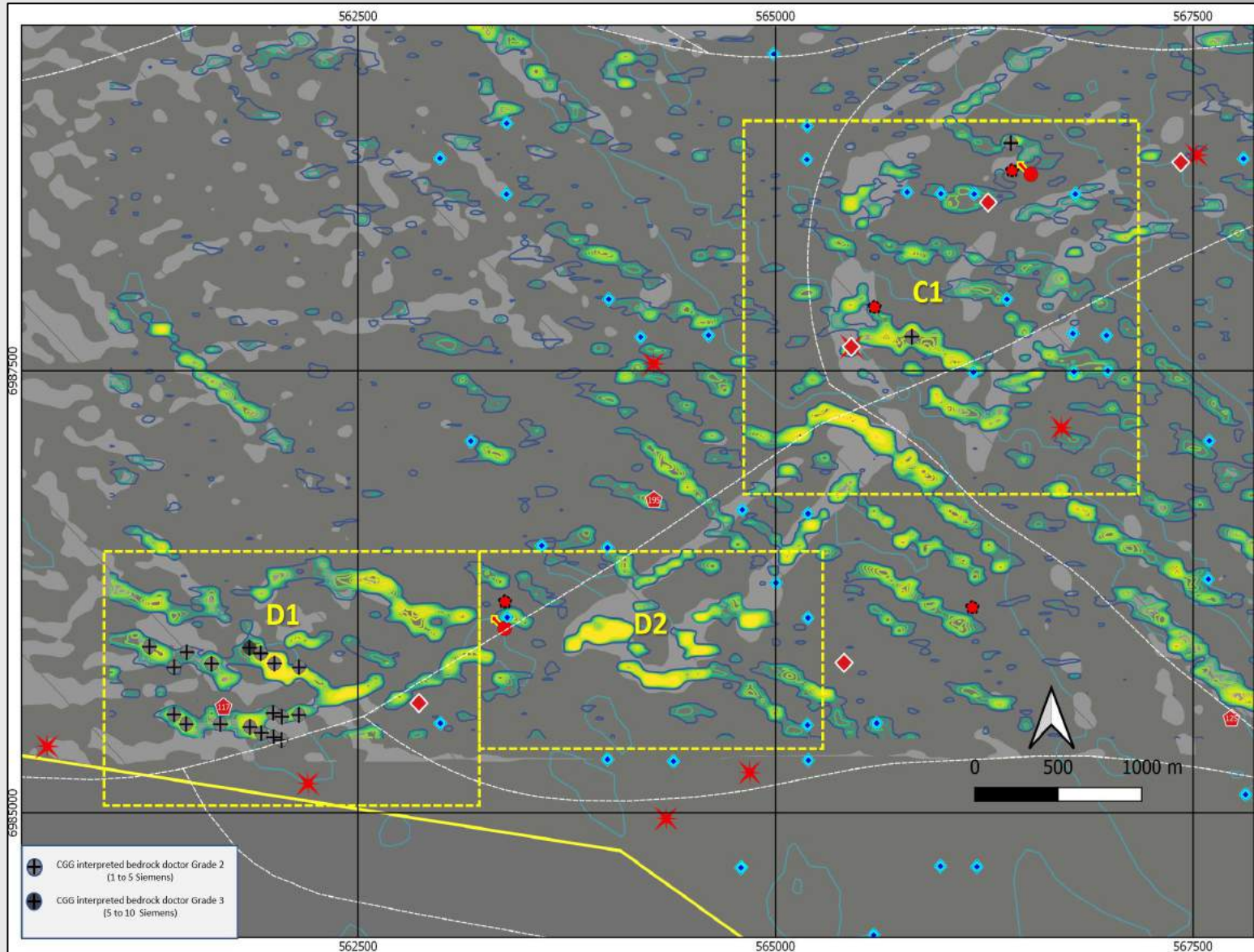
Three identifiable multi-km target trends locally-sourced. Needs minor mapping sampling and ready to drill



## Essos:

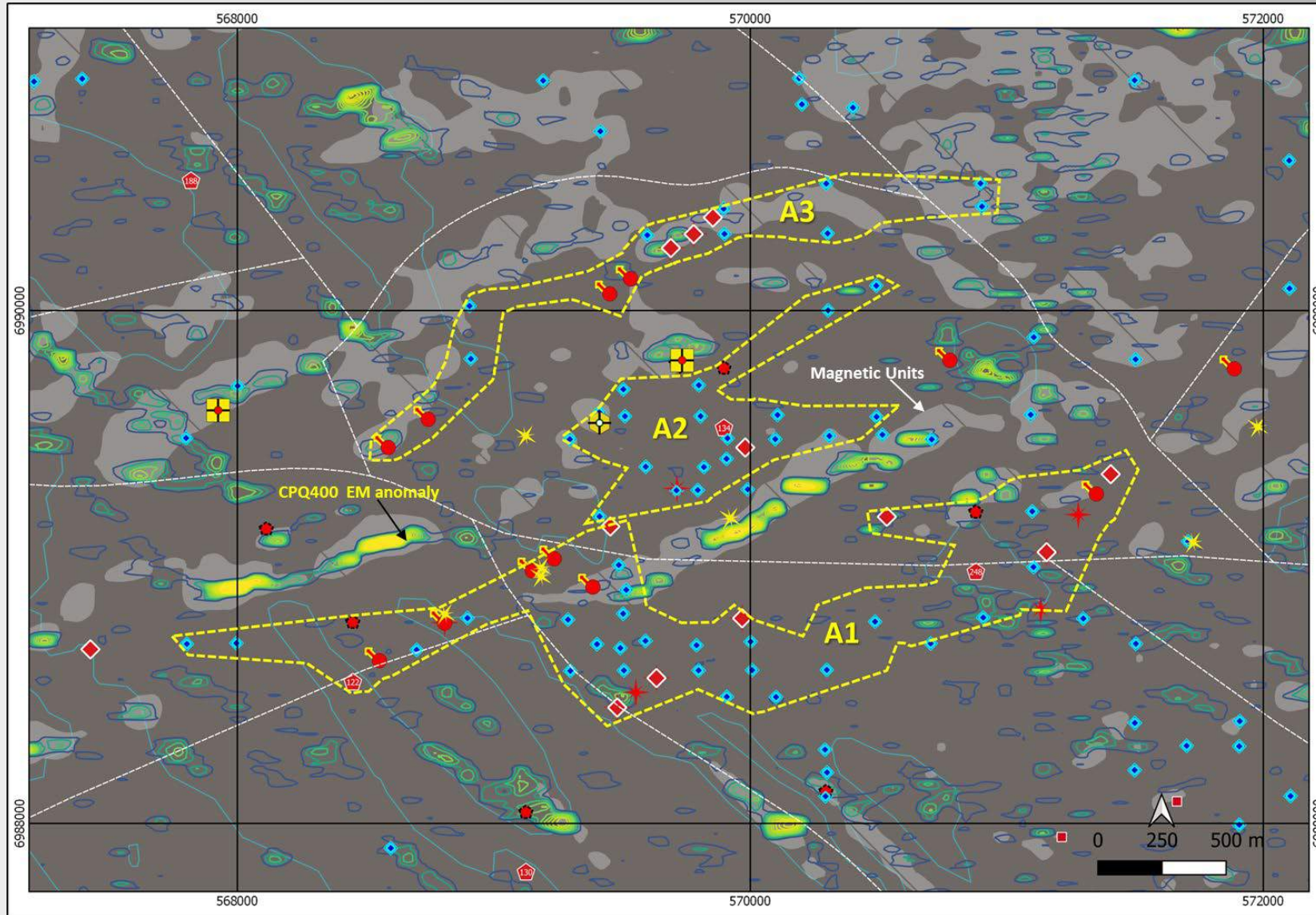
Covers 20 km of RWFZ with extensive iron formations. Sampled and mapped at only reconnaissance scale to date, widespread anomalous gold





Moderately strong EM D1 target and EM cutting iron formations plus anomalous tills define drill-ready targets

D1 drill ready, others need minor set up



Three identifiable multi-km target trends locally-sourced

Needs minor mapping sampling and ready to drill

Unrivalled district scale land package

Adjacent to world class, low cost production

Similar geological setting to Meliadine

20+ drill targets, numerous other target areas

Ongoing Exploration to identify new targets

High Quality Database and skilled technical team

Safe Jurisdiction, limited work requirements



Thank you

Matna

