

SOLSTICE

G O L D

Poised for Discovery in Premier Gold Camps



April 2022

SGC.V

Forward Looking Statements

This document contains certain forward-looking statements (“FLS”) relating but not limited to Solstice Gold Corp.’s (the “**Company**” or “**Solstice**”) expectations, intentions, plans and beliefs. FLS can often be identified by forward-looking words such as “emerging”, “goal”, “plan”, “intent”, “estimate”, “expects”, “scheduled”, “may” and “will” or similar words suggesting future outcomes, outlooks, or other expectations, beliefs, plans, objectives, assumptions, intentions or statements about future events, performance or treasury levels. FLS in this presentation also include, but are not limited to: potential prospects in relation to certain exploration properties and potential for discovery, including potential for gold deposits and the scale and grade thereof; statements regarding exploration programs and activities and the focus, extent and timing thereof, such as drilling, geophysics, rock sampling and till sampling; expected phases of growth; expected or potential cash flows; the possibility of optioning properties and the resulting cash position and generation of royalties; potential sales; and pending exploration results. The Company may adjust any work program, drilling or other planned activities, described in this presentation as it feels necessary based on results and other operational factors. There can be no guarantee that continued exploration at any of the Company’s exploration properties, each of which is at an early stage of exploration, will lead to the discovery of an economic gold deposit. Geological interpretations are considered FLS and are subject to change based on additional data and/or analysis.

Stakeholders, shareholders and prospective new investors should be aware that these statements are subject to known and unknown risks, uncertainties and other factors that could cause actual results to differ materially from those suggested by the FLS. Factors that could cause actual results to differ materially from any FLS include, but are not limited to, delays in obtaining or failures to obtain required governmental, environmental or other project approvals, inflation, changes in exchange rates, fluctuations in commodity prices, delays in the development of projects, risks related to COVID-19 and any variants thereof, and other factors. Shareholders are cautioned not to place undue reliance on FLS. By its nature, FLS involve numerous assumptions, inherent risks and uncertainties, both general and specific, that contribute to the possibility that the predictions, forecasts, projections and various future events will not occur including, the Company’s ability to execute present and future business strategies; exploration performance within expected ranges; anticipated future cash inflows; local and global economic conditions and the environment in which Solstice conducts its activities in the future; the price of gold, copper, silver and other key commodities; projected mineral grades; international exchange rates; anticipated exploration costs; the availability and timing of required stock exchange, regulatory, governmental and other approvals. Solstice undertakes no obligation to update publicly or otherwise revise any FLS whether as a result of new information, future events or other such factors which affect this information, except as required by law.

This presentation contains information with respect to adjacent or similar mineral properties in respect of which the Company has no interest or rights to explore or mine. Readers are cautioned that the Company has no interest in or right to acquire any interest in any such properties, and that mineral deposits on adjacent or similar properties are not indicative of mineral deposits on the Company’s properties. Past performance is no guarantee of future performance, and all investors are urged to consult their investment professionals before making an investment decision.

Sandy Barham, P.Geo., is the Qualified Person as defined by NI 43-101 standards responsible for reviewing and approving the technical content of this presentation.

Investment Highlights

Shareholders well positioned with three district scale gold exploration properties

- Funded and permitted for initial drilling in the Red Lake Gold Camp
- Grass-roots exploration starting at the Atikokan Gold Project
- Strategic land position in the emerging Meliadine Gold Camp
- Team with major gold discoveries and direct camp experience
- Monetizing recently acquired royalty & property portfolio in ON and QC

Management and Board

New senior leadership team takes company into its next phase of growth

MANAGEMENT

Mike Timmins
CEO, Director

David Fischer
CFO

Pablo McDonald
Exploration Manager

Sandy Barham
Sr. Geologist
Meliadine Discovery Team

BOARD OF DIRECTORS

David Adamson, Ph.D.
Chair
Bateman Deposit Discovery

Blair Schultz
Lead Independent Director
Chair of Audit Committee

Lisa Doddridge
Independent Director

Michael Gentile
Independent Director

Kevin Reid
Independent Director

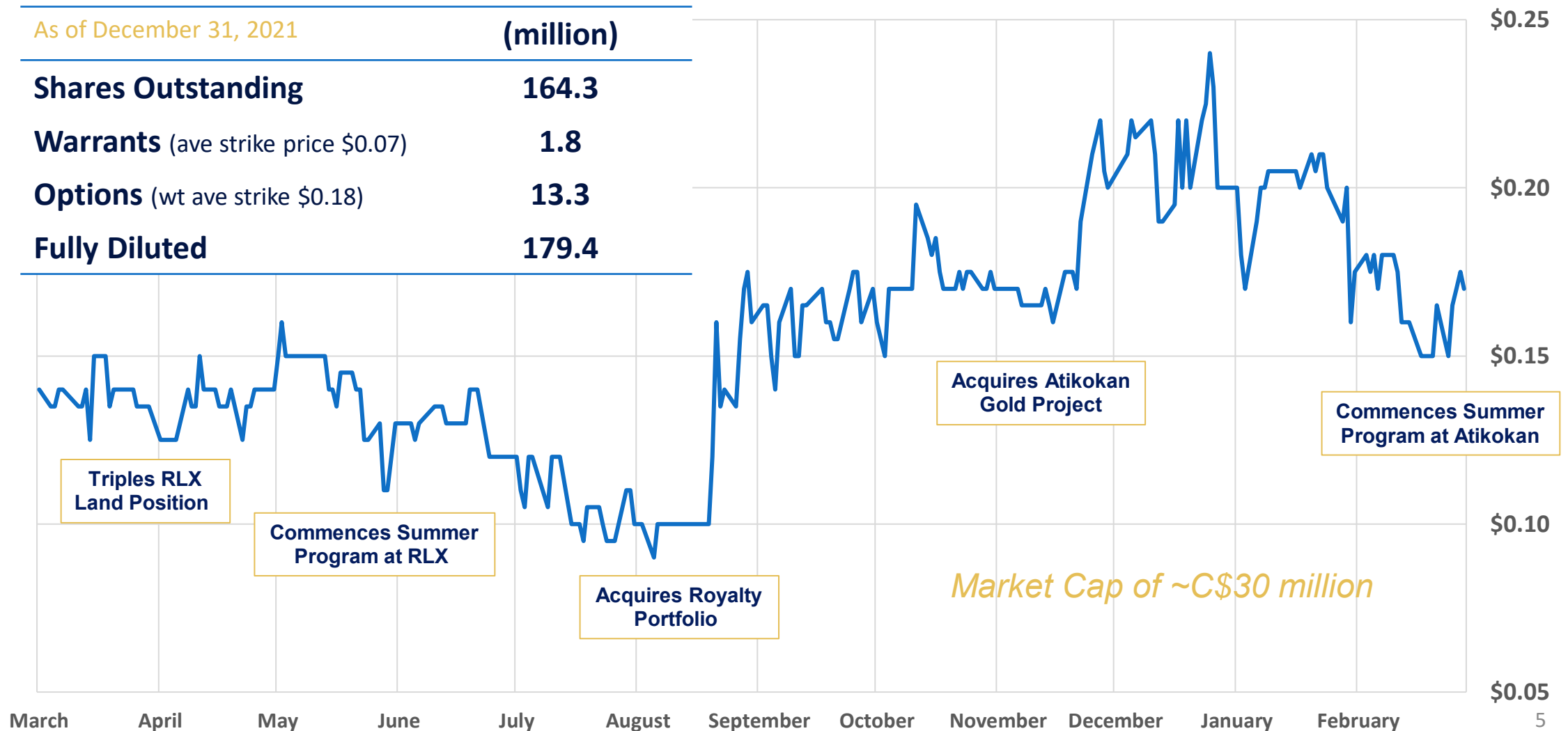
- Team with Two Major Gold Discoveries
- Actionable Experience on the Ground
- Capital Markets Access and Expertise
- Management and Board own ~38%



■ Insiders ■ Retail

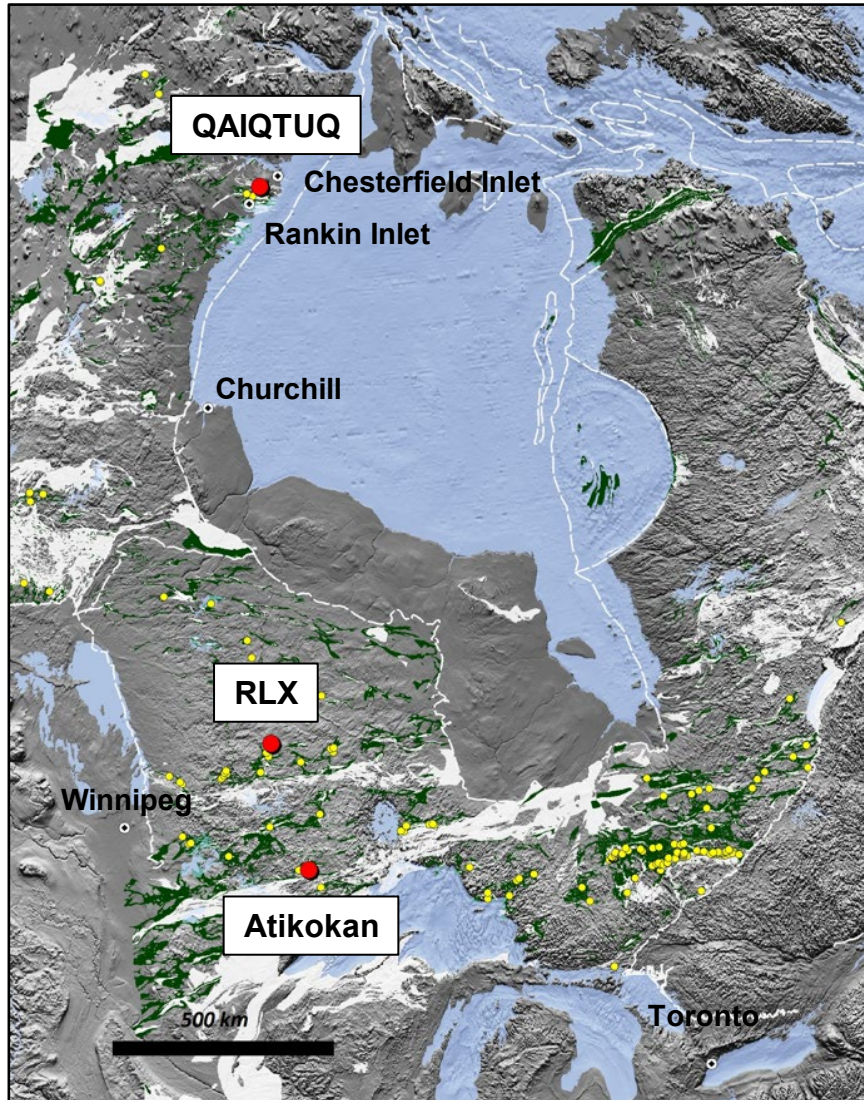
Capital Structure and Price Performance in 2021

Positive market response to recent technical and strategic catalysts



Exploration Assets – World Class Discovery Potential

Active in three, large-scale gold properties in Canada



Red Lake Extension – Spring Drilling

- Control of ~79km of greenstone structures in the NW of Camp
- Identifiable deep-tapping structures underpin mines and projects
- Limited regional exploration attracting more investment dollars

Atikokan Gold Project – Summer Field Work

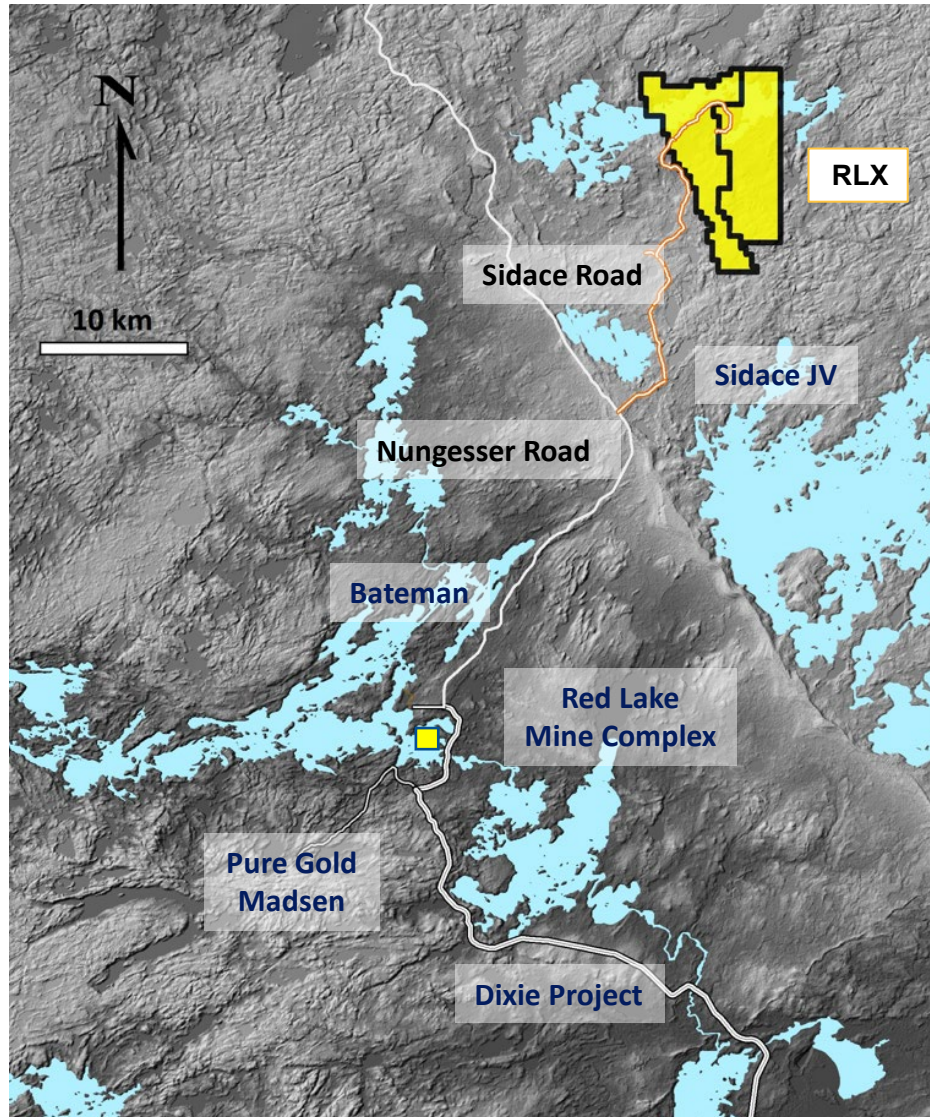
- 225km² property position in the Hammond Gold Camp
- Rare opportunity in Archean camp with limited exploration
- Multiple, prospective and mineralized structures

Qaiqtuq, Nunavut – Planning and Logistics

- Demonstrated potential for large-scale, high-grade gold deposits
- Meliadine Gold Camp at early stages of development
- Multiple target centers ready for systematic drilling

Red Lake Extension Project

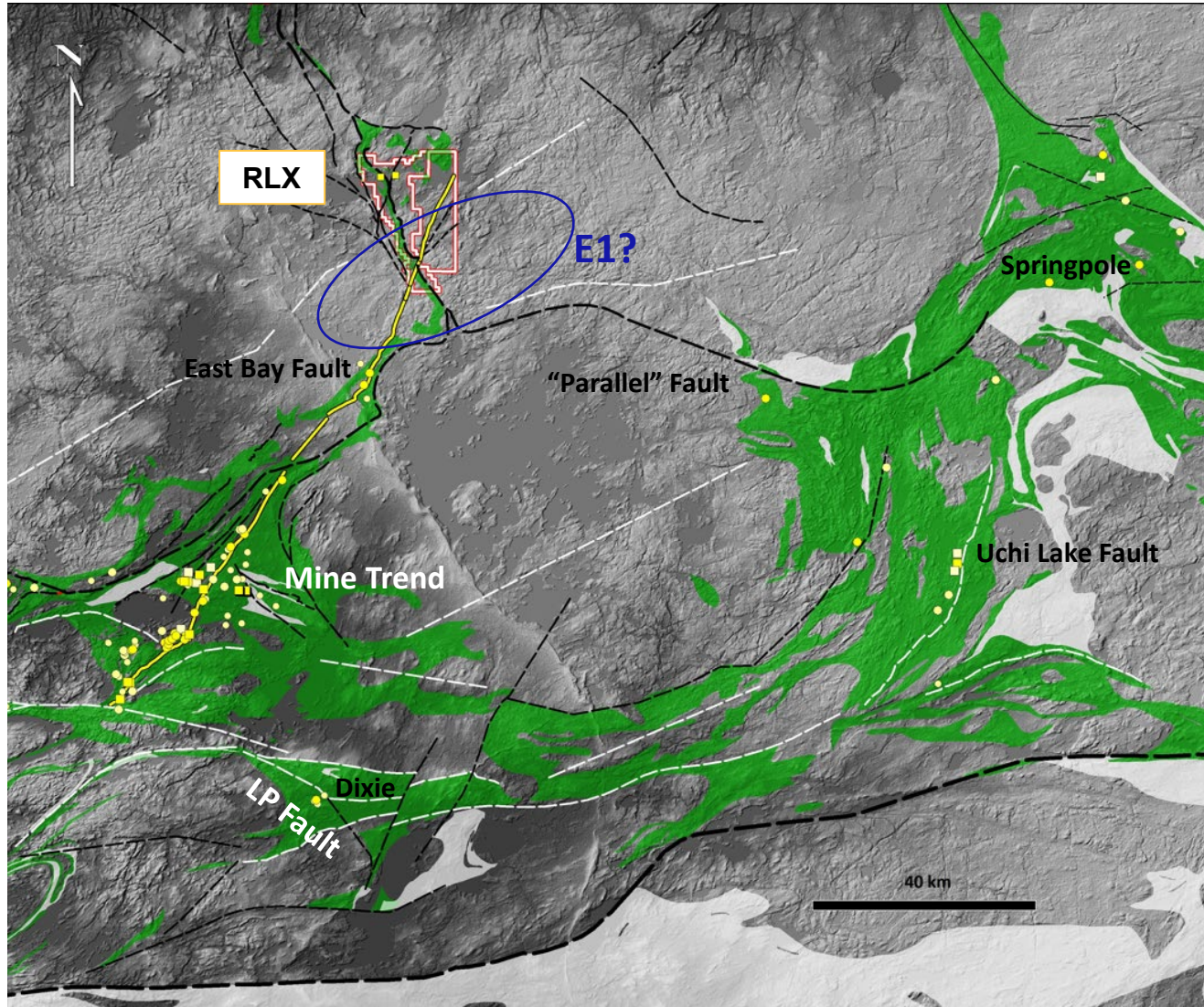
Established mining center with recent staking rush and increasing deal activity



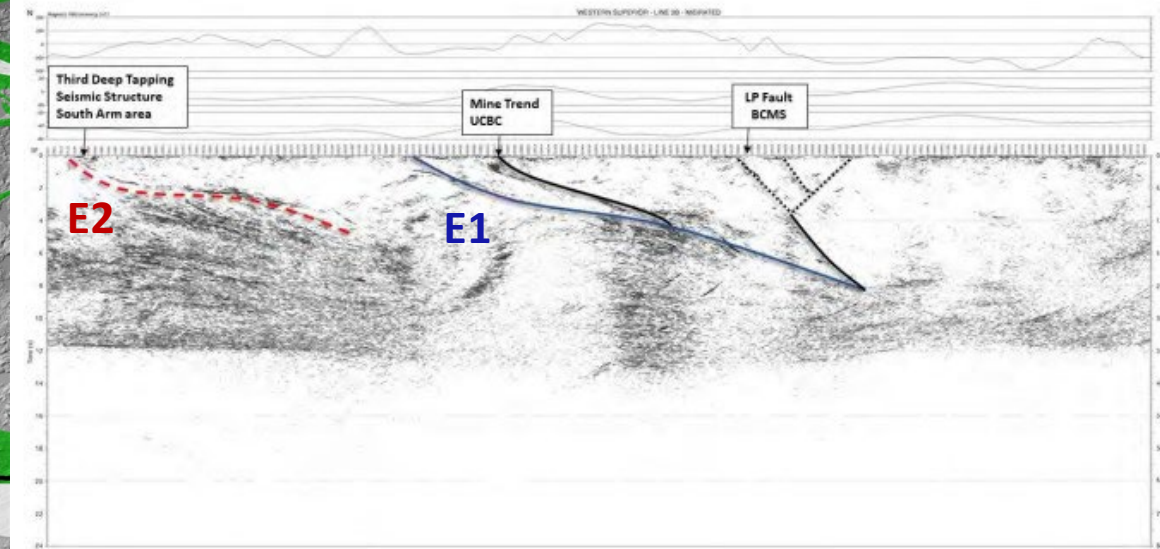
- >80 years of exploration, development and >30 Moz of gold production means low risk and excellent infrastructure
- Recent M&A, exploration discoveries and new mine development signal camp resurgence
 - Evolution and Kinross making large acquisitions
 - Pure Gold (Anglo ~19.9%) puts mine online
 - Barrick secures large exploration property in Camp
 - Yamana with grass roots exploration
 - Many juniors attracted by limited investment in regional exploration outside of the traditional mine trend
- RLX is 45km from the Mine Complex with access via Nungesser Road
- Project hosts a suite of gold-bearing structures at the **confluence of major regional faults** and with similar geology and chemistry to other deposits in the area

Red Lake District – High-Level Architecture

2004 seismic study identifies crustal-scale features that influence gold deposition

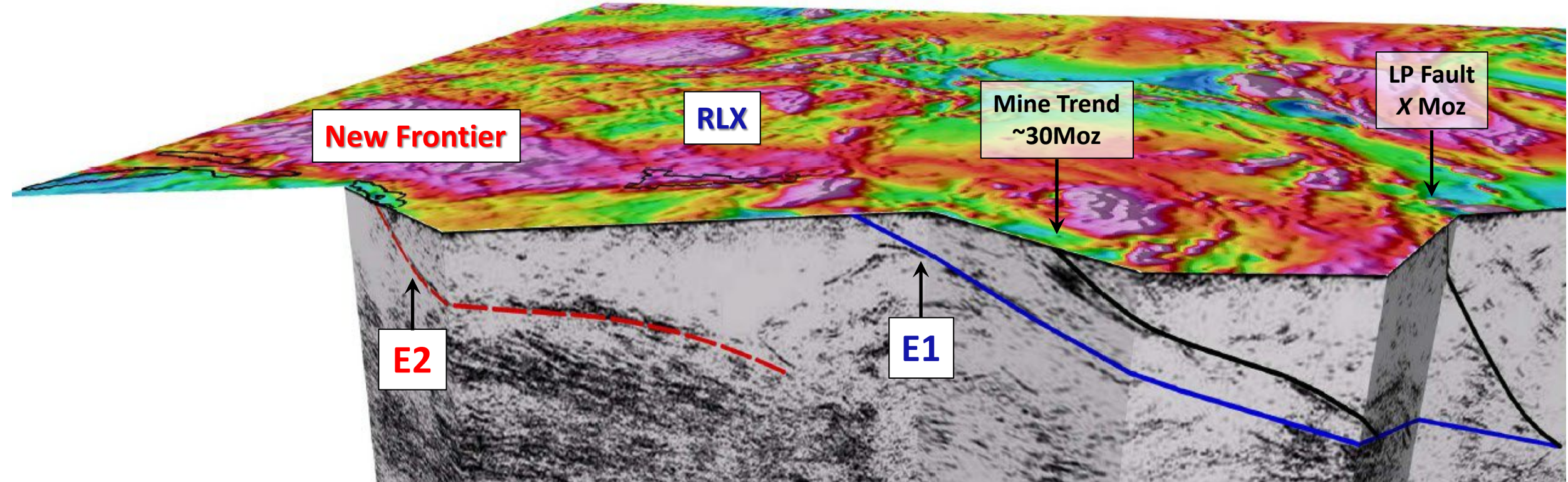


- Calvert¹ determined orientation of structure at depth, our extrapolated surface projection is close to RLX
- Jan '21 OGS² studied the raw survey data; new interp also identifies a third significant structure project to surface north of Red Lake which led to the 2021 staking rush



Red Lake District – Structural Architecture

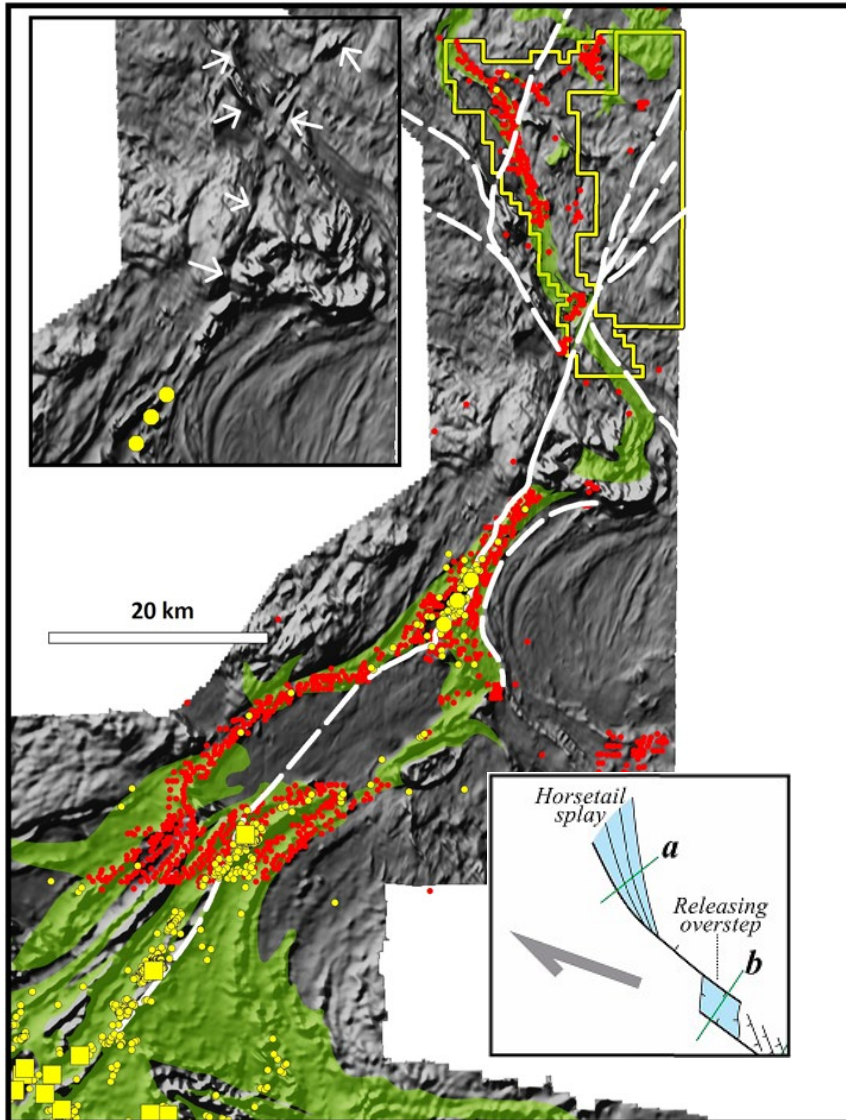
Third party interpreted E1 and E2 are fundamental structures with limited exploration



- Seismic features are crustal scale and provide support that major structures are underpinning the area
- Tools such as Mag, EM and geology allow us to refine the targeting

Red Lake - Gold Occurrences and EM Conductors

New conceptual framework for RLX with extensional structural features mapped



Empirical evidence also supports camp extensions

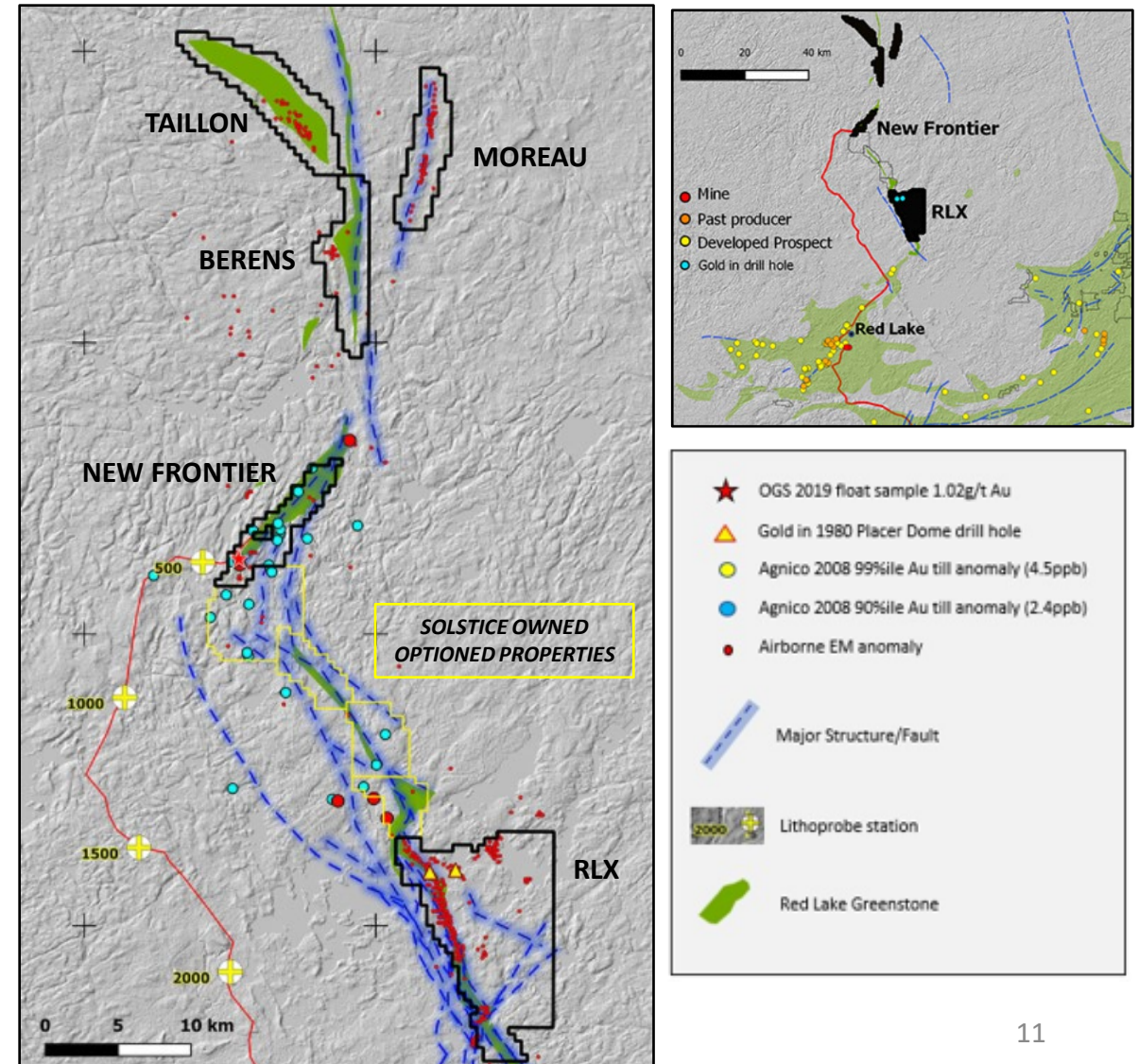
- Past producers, active miners and assessment drill holes (in yellow) outline the trend to the north
- 2008 OGS conductors (in red) tie with gold occurrences and link the whole region
- 2021 Field program confirms predicted structures, evidence of fault extensional features as well as the presence of mantle-derived sanukitoid minerals (high-Mg)
- Balmer aged rocks hosting mines present through the Sidace sequence and continues north into RLX

Our goal is to make another new discovery outside of the traditional mine trend, guided by a new, deep-tapping structural model and in areas with no modern exploration

Red Lake – Property Areas

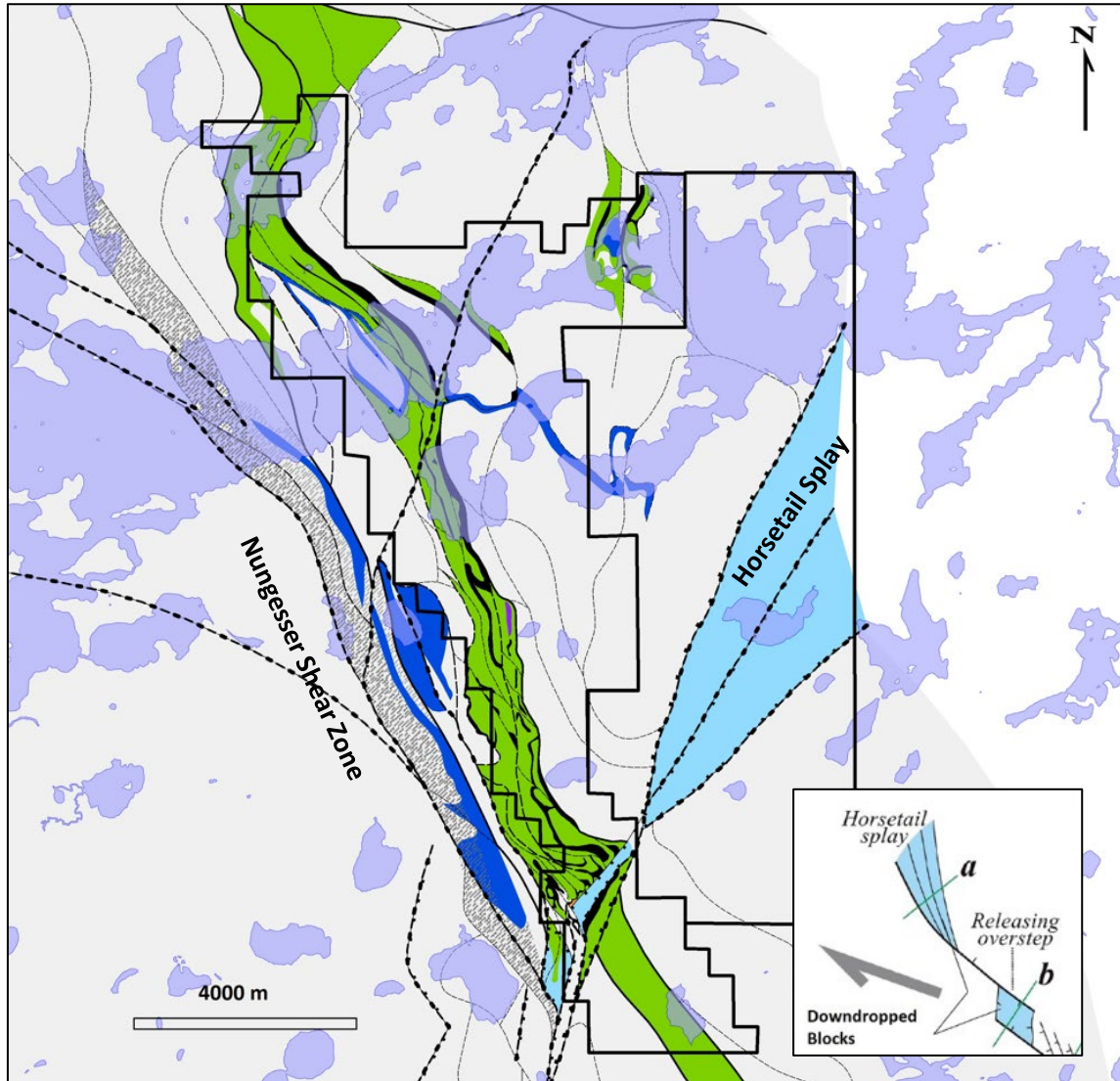
Limited modern exploration over the ~52km of Solstice controlled greenstone belts

- Placer scout drilling *hit gold*
- Agnico / OGS till surveys with results as high as *1.02g/t in float*
- Focus in 2021 has been at RLX
- Field mapping confirms predicted structures
- Full project surface geochem program completed, awaiting assays
- Successful in identifying prospective geology and Au-As-Sb-Hg soil signature coincident with geophysics and evolving structural model
- 2022 staking to capture potential fault extensions



Red Lake – Project Geology

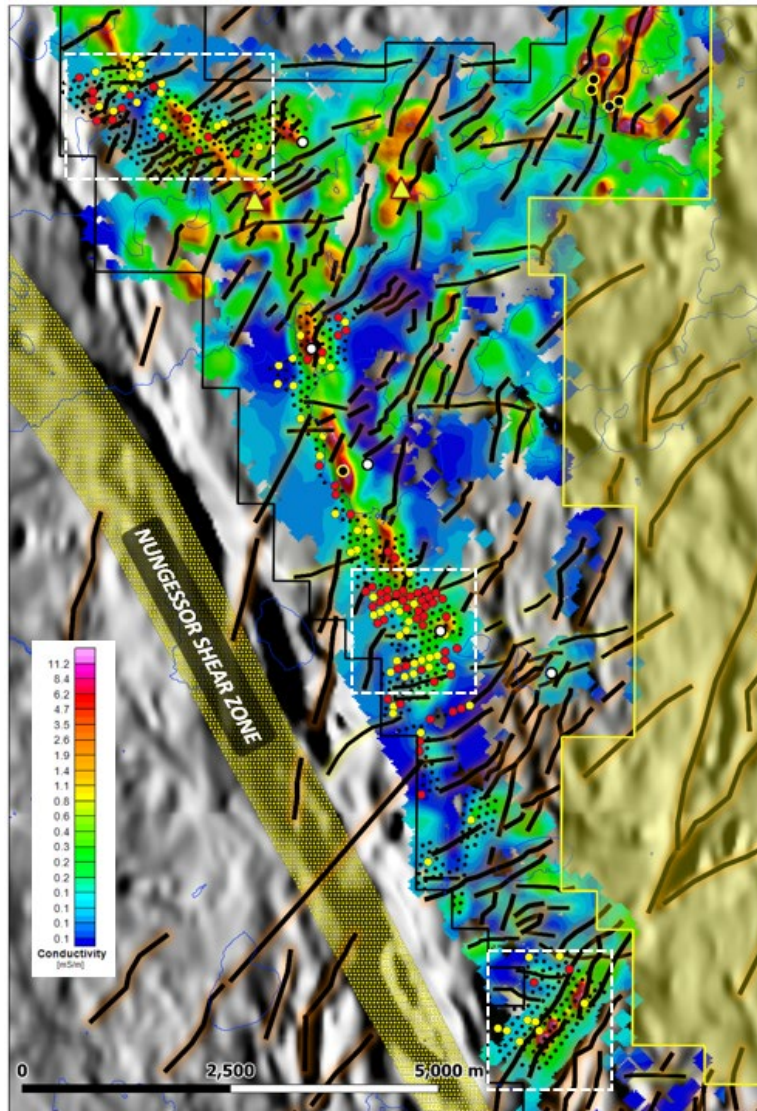
Preliminary interpretation of structure, rocks and a permissive setting for gold deposition



- Regional structural situation trends to the NW and is highlighted by the Nungesser Shear Zone (“NSZ”), mapped by the OGS and can be traced north for ~80km
- Large scale and multiple smaller NE trending local structure cross cuts regional fabric
- Volcanic rocks (green) and iron formation (black) are clear target settings
- Historic drilling reported sericite schist or skarn units, important host rocks in the Camp
- High magnesium gabbro (sanukitoid) bleeds into local shear fabric (royal blue)

Red Lake – 2021 EM and Soils Survey

Extensive NW conductors and NE trending EM / Fault corridors are developing into drill targets



- Selected Magnetic / EM and soils due to limited surface rock exposure
- Combined EM, soils and geological data reveal ~ 16km of strike potential
- Camp conductive features can be gold-bearing or serve to aid in vectoring
- Conductive sequence lies adjacent to the NSZ and display variable conductivity marking the presence of Red Lake geology
- Elevated gold and pathfinder elements associated with areas of reduced conductivity which may indicate alteration of primary conductive units

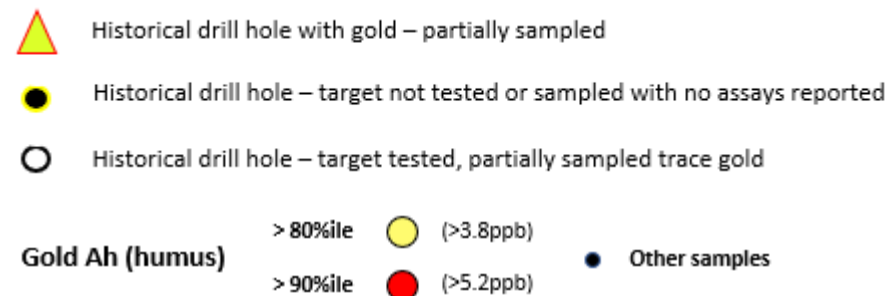
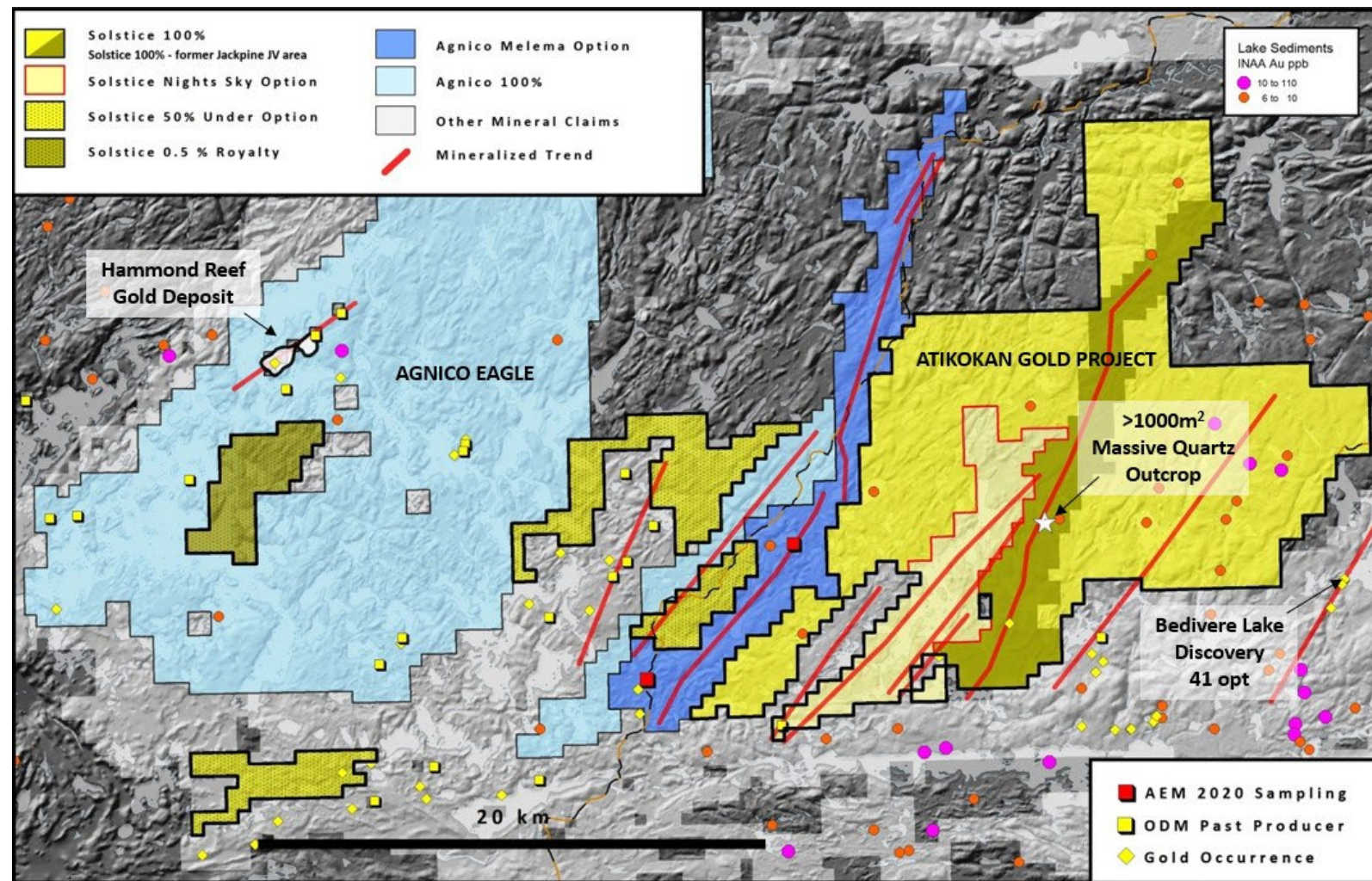


Figure: -80m conductivity slice of EM (75m spacing) 3D voxel with interpretation on shadowed regional OGS magnetic base. Area of new staking shown in yellow covering fault extensions. NSZ from OGS mapping.

Atikokan Gold Project – Hammond Gold Camp

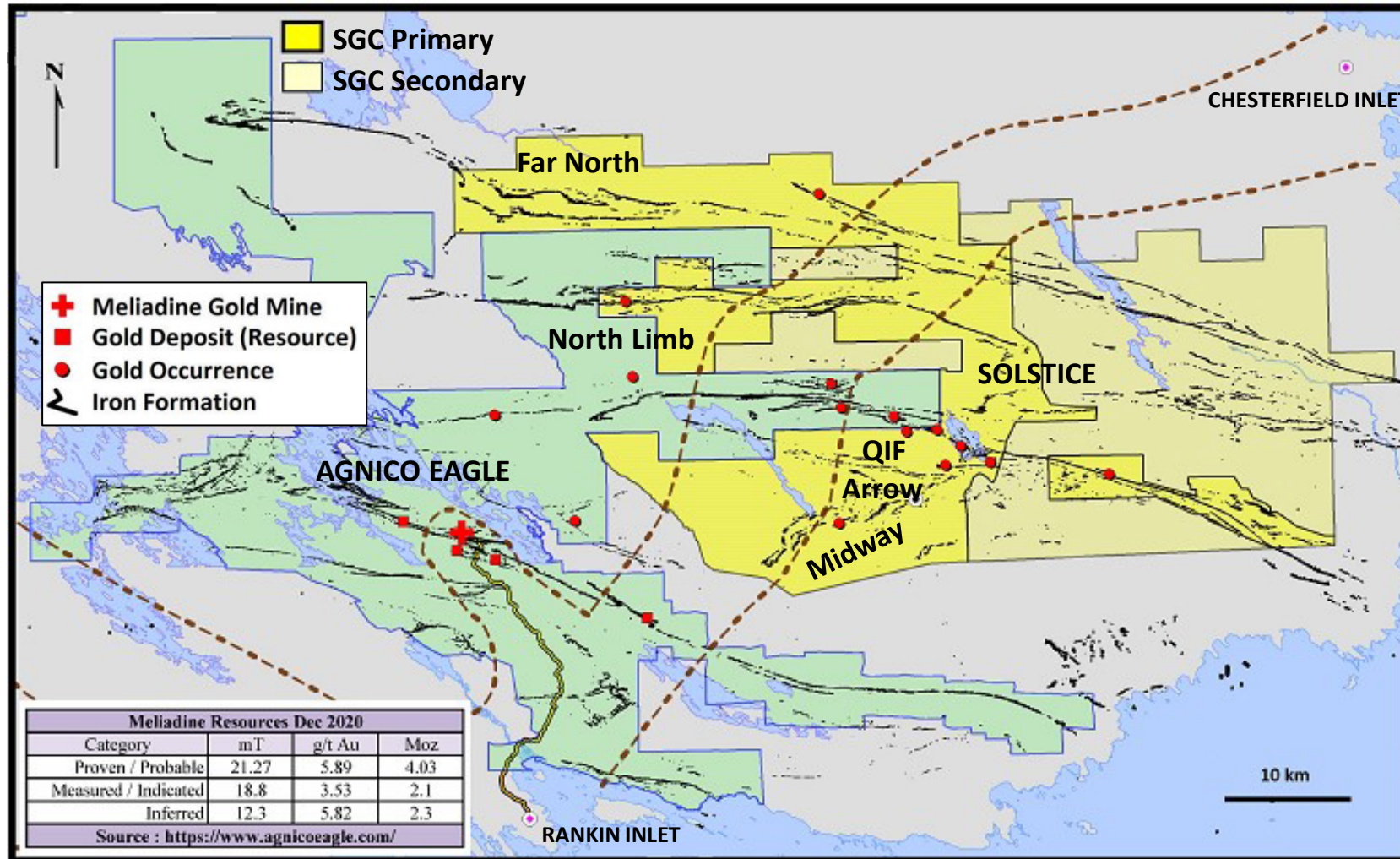
Agnico Eagle and several juniors are building land position in this overlooked, high-grade camp

- Archean gold camp with long history of mining and mineral development
- Hammond Reef is permitted
- 2016 Traxxion Gold discovery, 41 opt
- Agnico regional exploration
 - Options Melema, stripping
 - Stakes additional ground
- Solstice evaluation visit in 2020 identifies massive quartz veining
- 2022 field program underway
 - Airborne Magnetic Survey
 - Lidar / Orthophoto Survey
 - Summer Field Mapping
 - Soils Survey
- Goal for 2022 is to outline targets for 2023 ground IP and drilling



Qaiqtuq – Emerging Meliadine Gold Camp

Exploring for large gold deposits is best done close to supporting infrastructure



- Large land position contiguous with Agnico Eagle, host major regional structures
- 15km to Meliadine, AEM's newest operation, attractive economics
- 26km from Rankin Inlet
 - Mine services
 - Shipping and logistics
 - Full-service airport
- Road linking Chesterfield to Rankin in planning stages
- Project located in the Kivalliq Region
- The future of gold exploration in Canada is in Nunavut

Exploration Activities 2022

Work plans focused on getting drills turning in Red Lake and target development in Atikokan

Red Lake Extension Project

- Finalize targeting and logistics
- Commence Phase 1 drilling: ~5,000m

Atikokan Gold Project

- Summer field program: mapping and prospecting
- Airborne magnetic and lidar surveys

Qaiqtuq – Nunavut

- Project is fully permitted for drilling and a new camp
- Ongoing logistical planning for future drill campaigns



Royalty and Property Portfolio in ON and QC¹

Leveraging our expertise and relationships to generate and harvest value

- Potential cash inflows expected to be ~\$3.2m over next three years will partially offset G&A
- Optioning projects to increase cash position and generate new royalties for potential sale
- Shareholders get exposure windfall gains from potential new discoveries by project partners
- Acquisition of the portfolio resulted in our RLX project being 100% owned and royalty free

Portfolio Snapshot

- 78** Exploration projects located in ON and QC
- 43** Currently optioned with cash inflows
- 11** Existing standalone royalties
- 35** Properties available for option / sale
- 75%** Gold
- 25%** Green metals: Li, Cu and REE

Solstice has received ~\$850k in cash and share payments from the portfolio and 4 new deals have created 2 new stand-alone royalties since acquiring the portfolio in October 2021

Outlook & Catalysts

2022 will be an exciting year of drilling and value growth for shareholders

- Funded for initial drilling in Red Lake
- Field work kicked off in Atikokan
- Active on deals from property portfolio to generate cash and new royalties
- Reviewing strategies to unlock value at Qaiqtuq near Meliadine
- Market engagement to intensify throughout the year



SOLSTICE

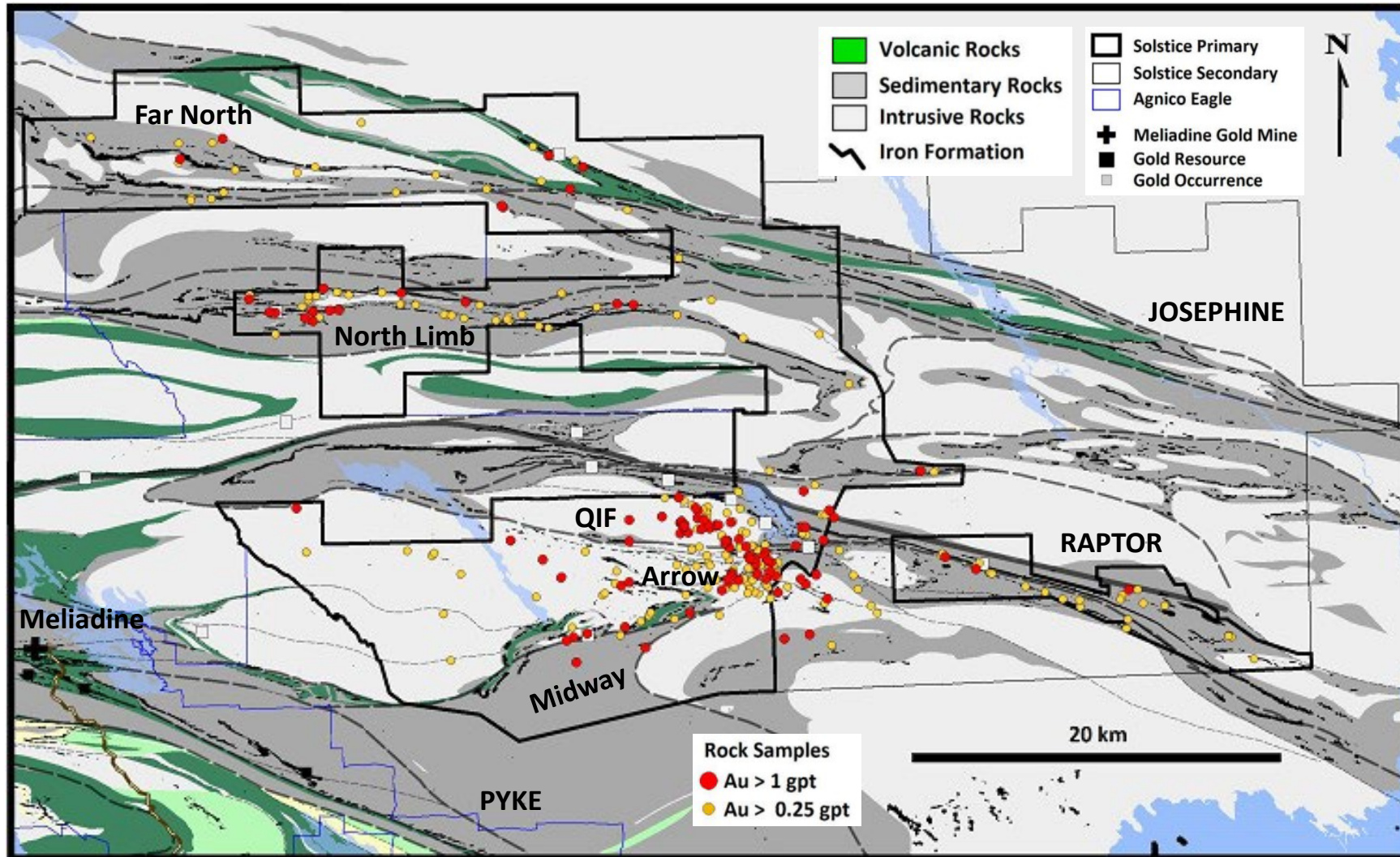
G O L D

Investor Relations
604 283 7234
info@solsticegold.com

SGC.V

Qaiqtuq – Geology and Structure

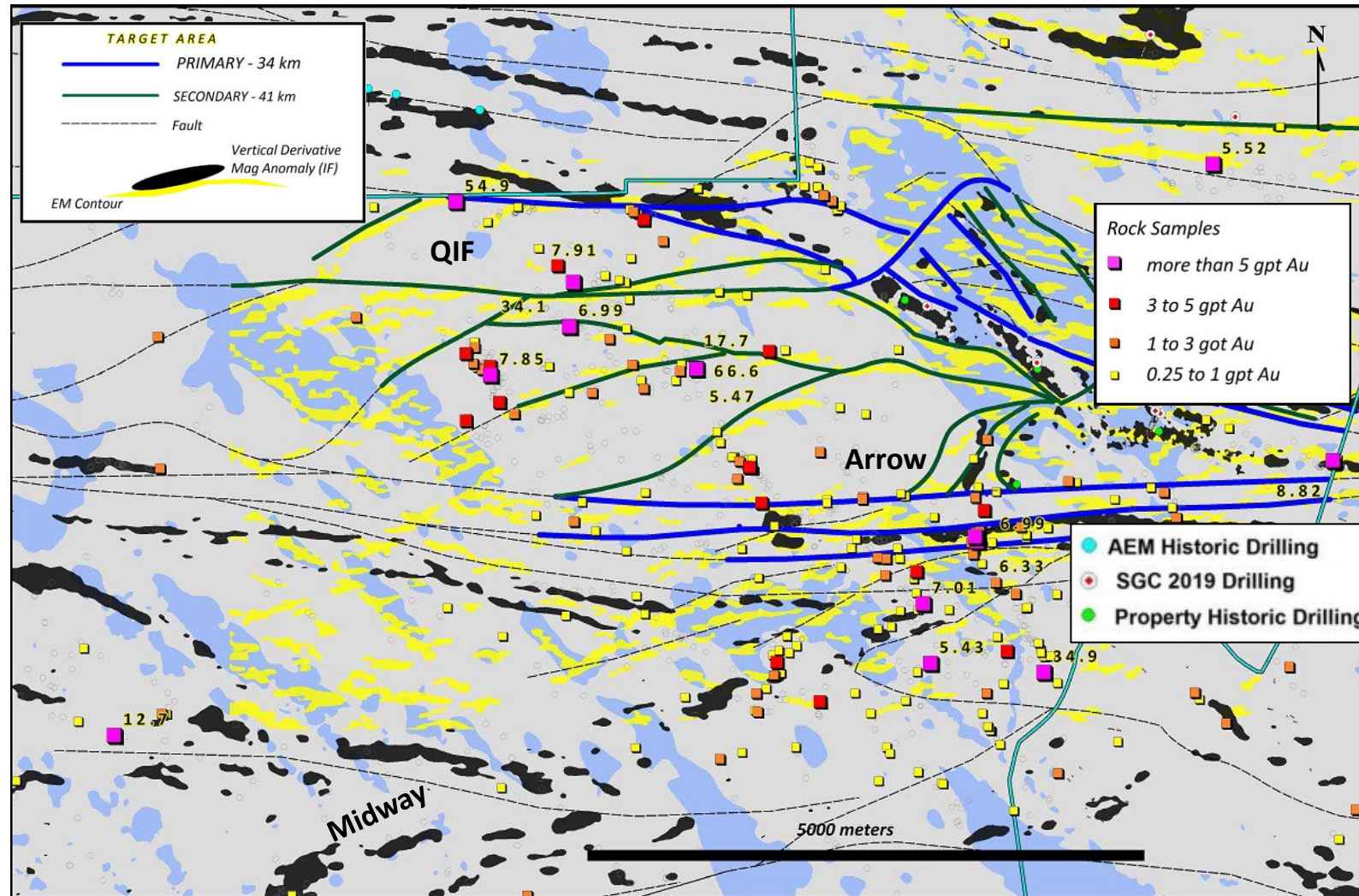
Favorable geological settings and important physical features are key target areas



- First order structures extend across region
 - Pyke (Meliadine)
 - Raptor (Qaiqtuq)
 - Josephine (Far North, North Limb)
- Secondary faults and folds associated with iron-formation and EM conductors are key targets
 - QIF, Arrow and Midway Corridors
- All structures are gold bearing
- Large high grade boulder field with evidence suggesting source is 800-1200m away

Qaiqtuq – Primary Exploration Area

Exploration will focus on the core of holdings, a classic set up for the concentration of gold



Surface Sample Highlights¹ (n=4,954)

Gold – g/t	Sample Type
66.6	Boulder ²
54.9	Boulder
34.9	Boulder
24.4	Outcrop
17.7	Boulder
12.7	Outcrop
11.66	Boulder ²
8.82	Boulder
7.91	Boulder
7.85	Boulder
7.01	Boulder
6.47	Boulder
6.33	Outcrop

1. Assay results from grab samples (boulders and outcrop) are selected samples and are not necessarily representative of the mineralization hosted on the property, 2. Samples collected by RPA (Roscoe Postle Associates Inc.) in 2018

References

¹ Calvert, Andrew J. and Cruden, Alexander R. 2004. *Seismic evidence for the preservation of the Archean Uchi granite-greenstone belt by crustal-scale extension. Tectonophysics 388 p.135-143*

² Lewis, S.O. 2021. *Deep tapping seismic structure in the Red Lake district; in Ontario Geological Survey, Resident Geologist Program, Recommendations for Exploration 2020-2021, p.9-13.*

