



Poised for Discovery in Premier Gold Camps

July 2022

SGC.V

# Forward Looking Statements

---

This document contains certain forward-looking statements (“FLS”) relating but not limited to Solstice Gold Corp.’s (the “**Company**” or “**Solstice**”) expectations, intentions, plans and beliefs. FLS can often be identified by forward-looking words such as “emerging”, “goal”, “plan”, “intent”, “estimate”, “expects”, “scheduled”, “may” and “will” or similar words suggesting future outcomes, outlooks, or other expectations, beliefs, plans, objectives, assumptions, intentions or statements about future events, performance or treasury levels. FLS in this presentation also include, but are not limited to: potential prospects in relation to certain exploration properties and potential for discovery, including potential for gold deposits and the scale and grade thereof; statements regarding exploration programs and activities and the focus, extent and timing thereof, such as drilling, geophysics, rock sampling and till sampling; expected phases of growth; expected or potential cash flows; the possibility of optioning properties and the resulting cash position and generation of royalties; potential sales; and pending exploration results. The Company may adjust any work program, drilling or other planned activities, described in this presentation as it feels necessary based on results and other operational factors. There can be no guarantee that continued exploration at any of the Company’s exploration properties, each of which is at an early stage of exploration, will lead to the discovery of an economic gold deposit. Geological interpretations are considered FLS and are subject to change based on additional data and/or analysis.

Stakeholders, shareholders and prospective new investors should be aware that these statements are subject to known and unknown risks, uncertainties and other factors that could cause actual results to differ materially from those suggested by the FLS. Factors that could cause actual results to differ materially from any FLS include, but are not limited to, delays in obtaining or failures to obtain required governmental, environmental or other project approvals, inflation, changes in exchange rates, fluctuations in commodity prices, delays in the development of projects, risks related to COVID-19 and any variants thereof, and other factors. Shareholders are cautioned not to place undue reliance on FLS. By its nature, FLS involve numerous assumptions, inherent risks and uncertainties, both general and specific, that contribute to the possibility that the predictions, forecasts, projections and various future events will not occur including, the Company’s ability to execute present and future business strategies; exploration performance within expected ranges; anticipated future cash inflows; local and global economic conditions and the environment in which Solstice conducts its activities in the future; the price of gold, copper, silver and other key commodities; projected mineral grades; international exchange rates; anticipated exploration costs; the availability and timing of required stock exchange, regulatory, governmental and other approvals. Solstice undertakes no obligation to update publicly or otherwise revise any FLS whether as a result of new information, future events or other such factors which affect this information, except as required by law.

This presentation contains information with respect to adjacent or similar mineral properties in respect of which the Company has no interest or rights to explore or mine. Readers are cautioned that the Company has no interest in or right to acquire any interest in any such properties, and that mineral deposits on adjacent or similar properties are not indicative of mineral deposits on the Company’s properties. Past performance is no guarantee of future performance, and all investors are urged to consult their investment professionals before making an investment decision.

Sandy Barham, P.Geo., is the Qualified Person as defined by NI 43-101 standards responsible for reviewing and approving the technical content of this presentation.

# Investment Highlights

Shareholders well positioned with three district-scale gold opportunities

---

- Gold explorer focused on established mining regions in Canada
- Large, strategic and under explored properties
- Team with major gold discoveries and direct camp experience
- Drilling commenced at the Red Lake Extension project

# Management and Board

Team in place to take company through its next phase of growth

## MANAGEMENT

**Mike Timmins**  
CEO, Director

**David Fischer**  
CFO

**Pablo McDonald**  
Exploration Manager

**Sandy Barham**  
Sr. Geologist  
*Meliadine Discovery*

**Sirena Jacobson**  
Project Geologist

## BOARD OF DIRECTORS

**David Adamson, Ph.D.**  
Chair  
*Bateman Discovery*

**Blair Schultz**  
Lead Independent Director  
Chair of Audit Committee

**Lisa Doddridge**  
Independent Director

**Michael Gentile**  
Independent Director

**Kevin Reid**  
Independent Director

- Team with Two Major Gold Discoveries
- Real Experience on the Ground
- Capital Markets Access and Expertise
- Management and Board own ~38%



■ Insiders ■ Retail

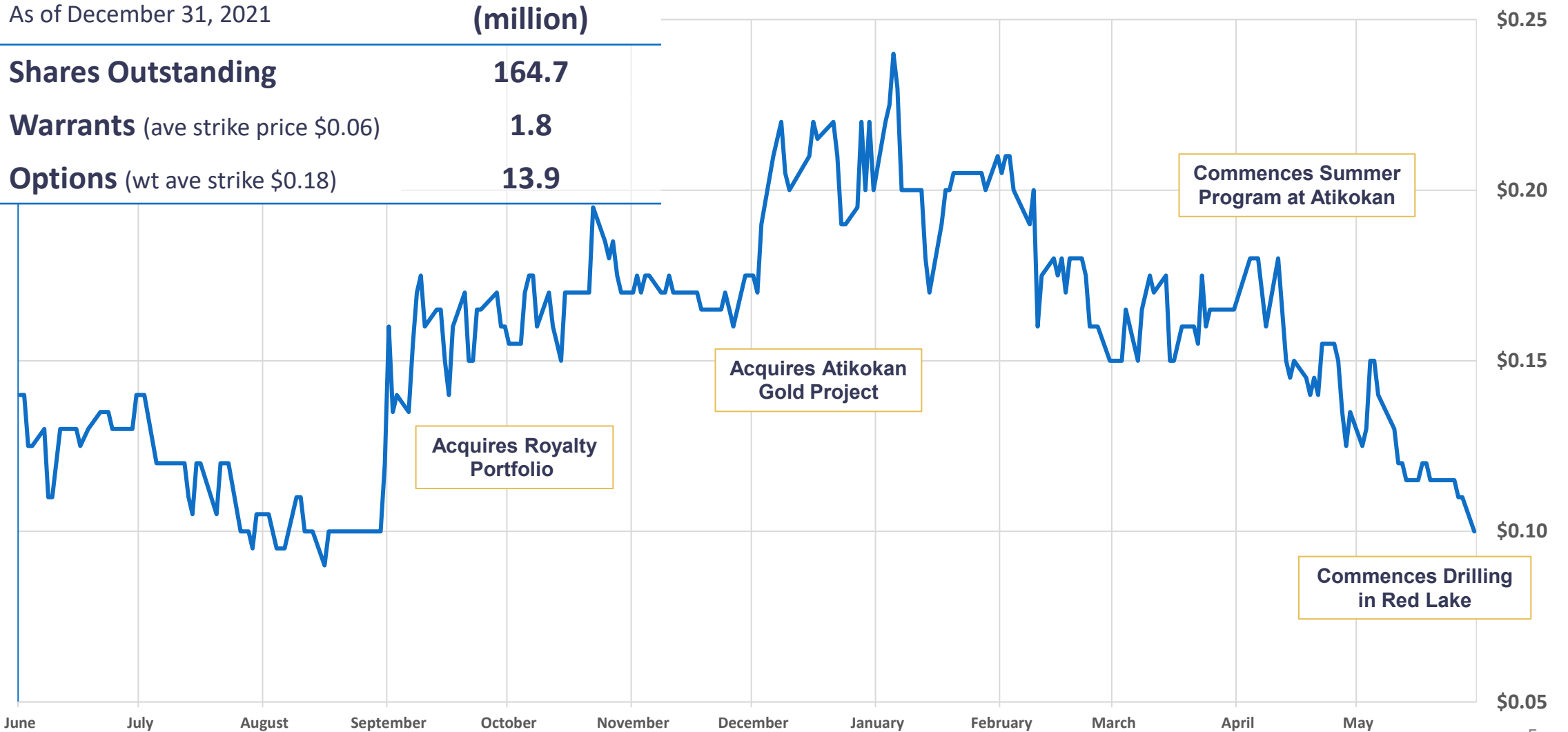
# Capital Structure and Price Performance

Opportunities ahead of several technical and strategic catalysts in H2

As of December 31, 2021

(million)

<b>Shares Outstanding</b>	<b>164.7</b>
<b>Warrants</b> (ave strike price \$0.06)	<b>1.8</b>
<b>Options</b> (wt ave strike \$0.18)	<b>13.9</b>



# Exploration Assets – World Class Discovery Potential

Active in attractive and prospective gold exploration properties in Canada



## Red Lake Extension – Commenced Drilling

- Control of ~79km of greenstone structures in the NW of Camp
- Identifiable deep-tapping structures underpin mines and projects
- Limited regional exploration attracting more investment dollars
- Companies still making new discoveries with new paradigms

## Atikokan Gold Project – Field Work Underway

- 225km<sup>2</sup> property position in the Hammond Gold Camp
- Rare opportunity in Archean camp with limited exploration
- Multiple, prospective and mineralized structures

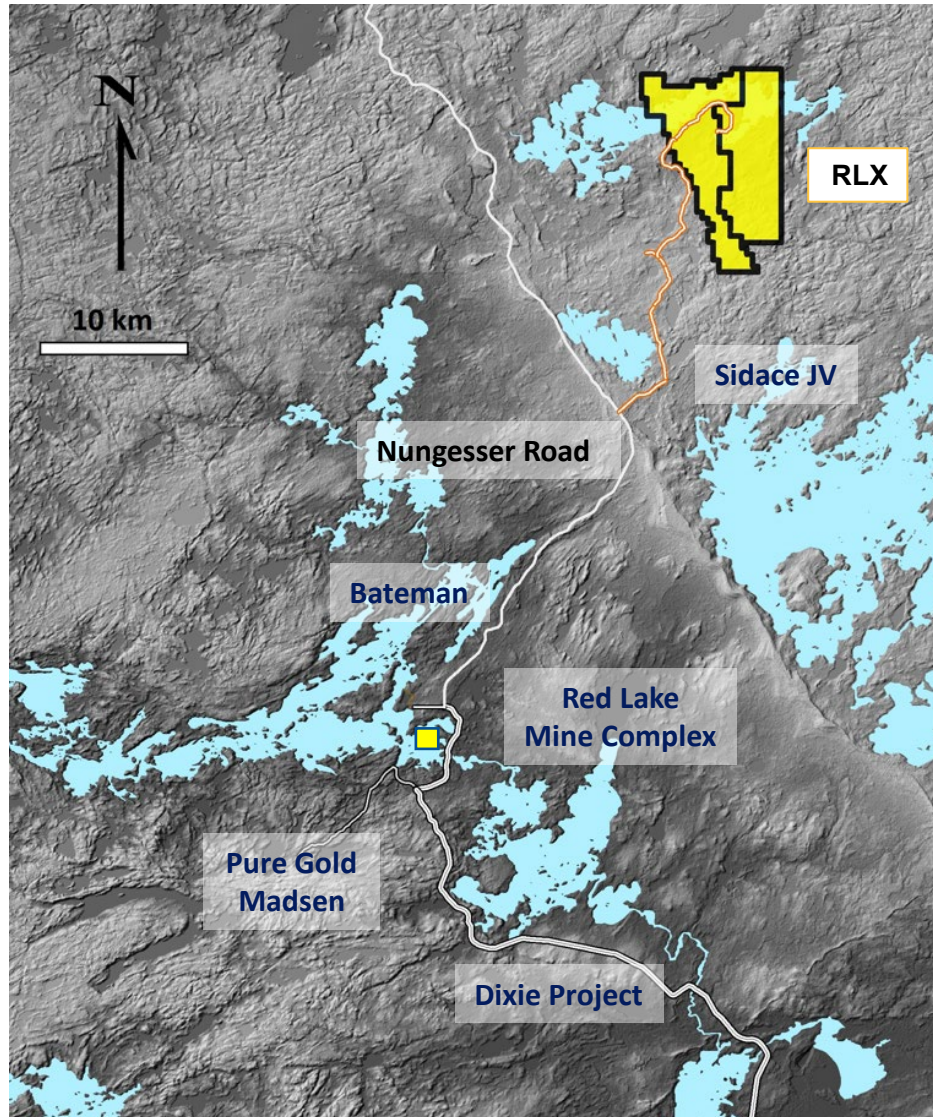
## Qaiqtuq, Nunavut – Planning and Logistics

- Kilometers of gold-bearing structure in Meliadine Camp
- Prime hunting ground for next major discovery in the region
- ~29Moz<sup>1</sup>: Back River, Meliadine, Hope Bay, Amaruq deposits
- Nunavut in early stages of mineral development

<sup>1</sup> Mineral reserve and resource statements from company websites

# Red Lake Extension Project (RLX)

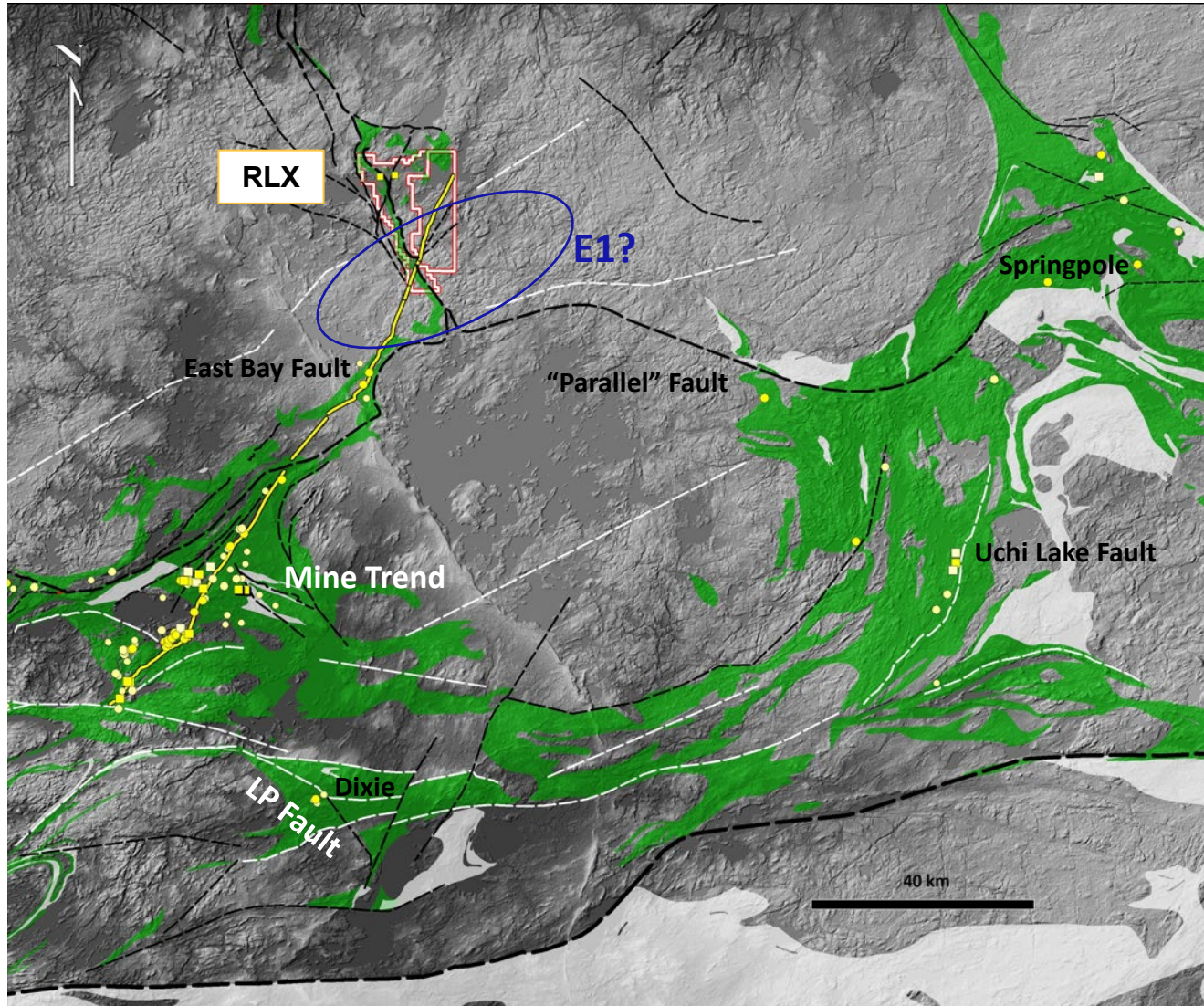
Lead recent staking rush in the NW corner of this established mining camp



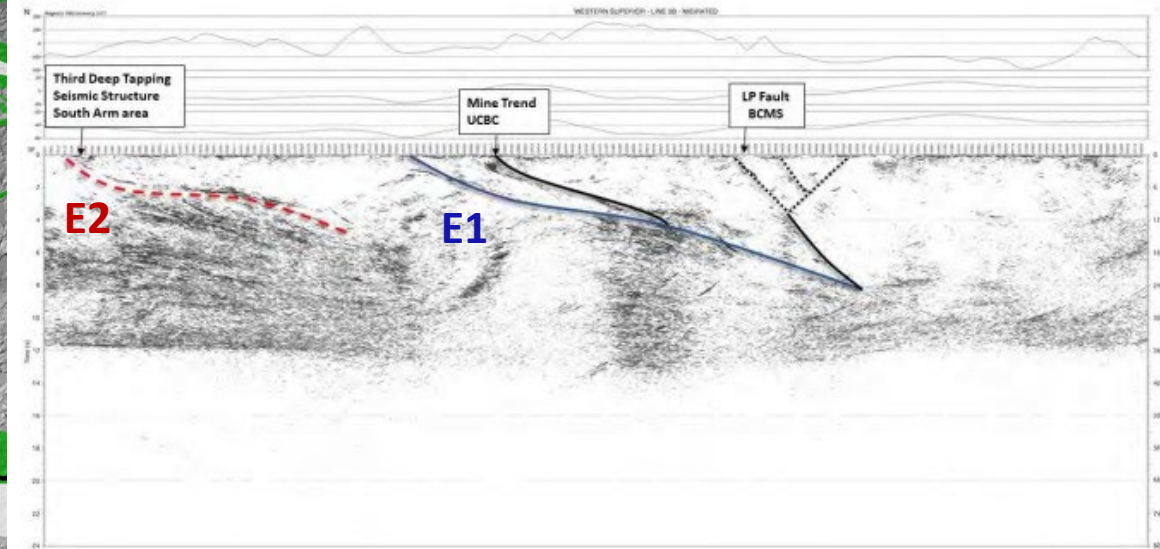
- >80 years of exploration, development and >30 Moz of gold production means low risk and excellent infrastructure
- Recent M&A, exploration discoveries and new mine development signal camp resurgence
  - Evolution and Kinross making large acquisitions
  - Pure Gold (Anglo ~19.9%) puts mine online
  - Barrick secures large exploration property in Camp
  - Many juniors attracted by limited investment in regional exploration outside of the traditional mine trend
- RLX is 45km from the Mine Complex with access via Nungesser Road and covers an important area of the Camp where the potential has only recently been identified
- Project hosts a suite of gold-bearing structures at the **confluence of major regional faults** and with similar geology and chemistry to other deposits in the area

# Red Lake Camp – Architecture

2004 seismic identifies crustal-scale features that likely introduced gold



- Calvert<sup>1</sup> determined orientation of structure at depth, our extrapolated surface projection is close to RLX
- Jan '21 OGS<sup>2</sup> studied the raw survey data; new interp also identifies a third significant structure project to surface north of Red Lake which led to the 2021 staking rush



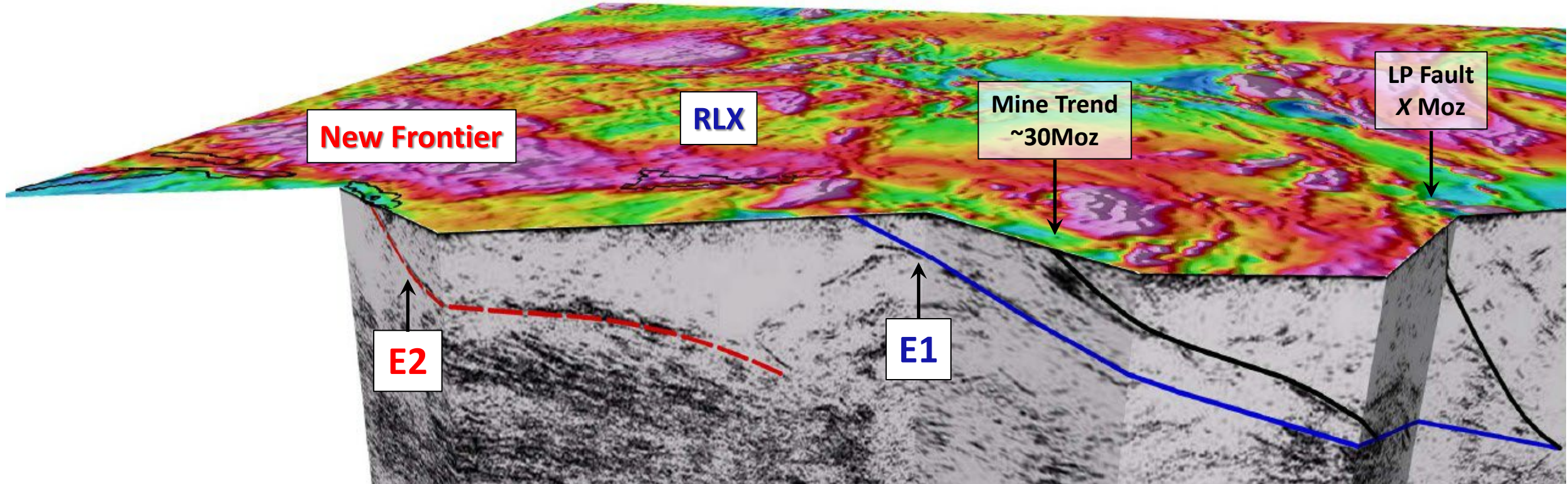
<sup>1</sup> Calvert, Andrew J. and Cruden, Alexander R. 2004. Seismic evidence for the preservation of the Archean Uchi granite-greenstone belt by crustal-scale extension. *Tectonophysics* 388 p.135-143

<sup>2</sup> Lewis, S.O. 2021. Deep tapping seismic structure in the Red Lake district; in Ontario Geological Survey, Resident Geologist Program, Recommendations for Exploration 2020-2021, p.9-13.



# Solstice Land Position – Underlying Structure

Most fundamental structures that underpin the camp have limited exploration

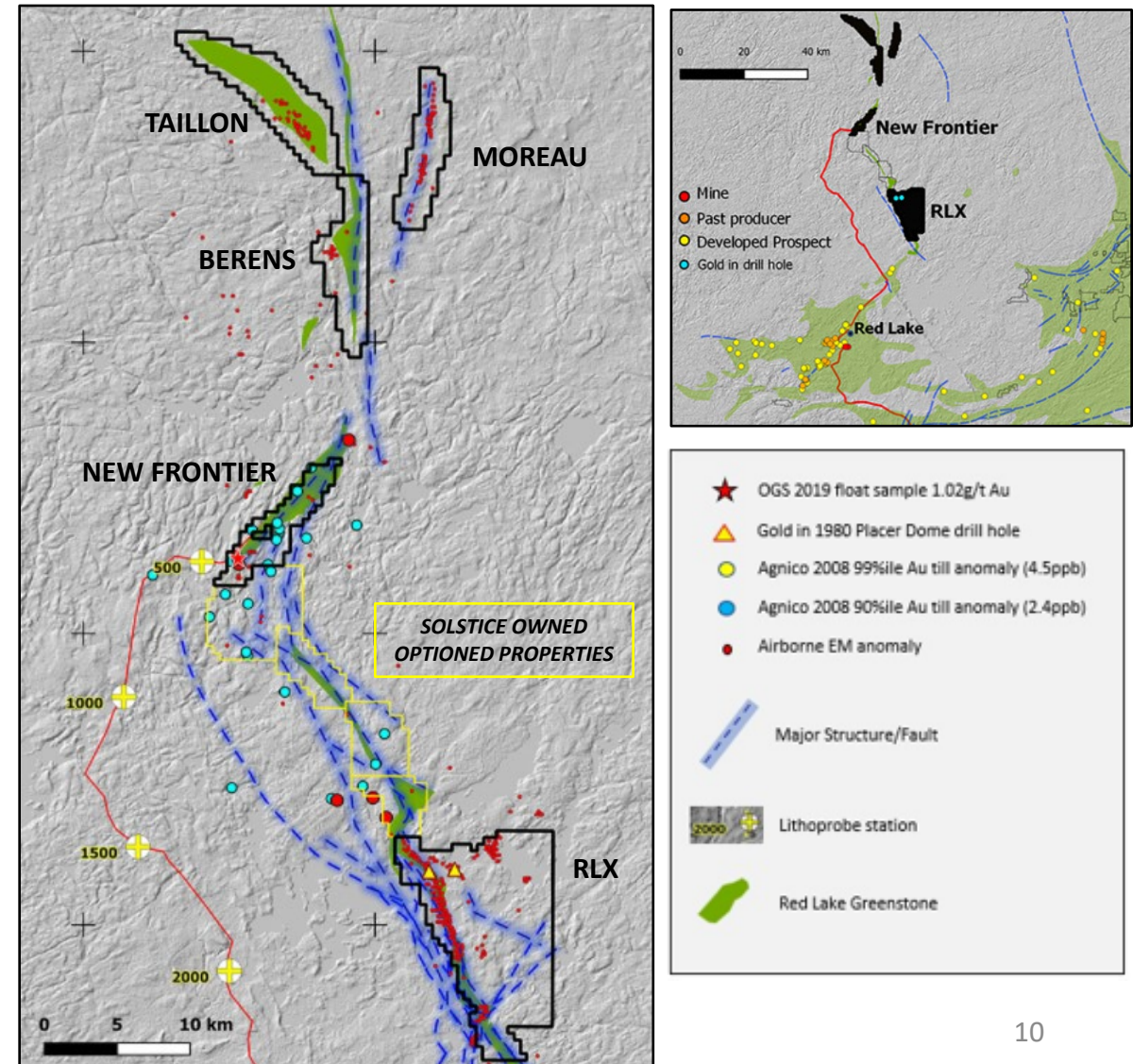


- Third party interpreted E1 and E2 are fundamental structures with limited modern exploration
- Seismic features are crustal scale and proximal to mapped mantle-derived Sanukitoid suite of intrusives
- Evolution, Barrick and Kinross have large exploration projects on trend or to the south; Solstice controls the north

# RLX – Property Areas and Previous Work

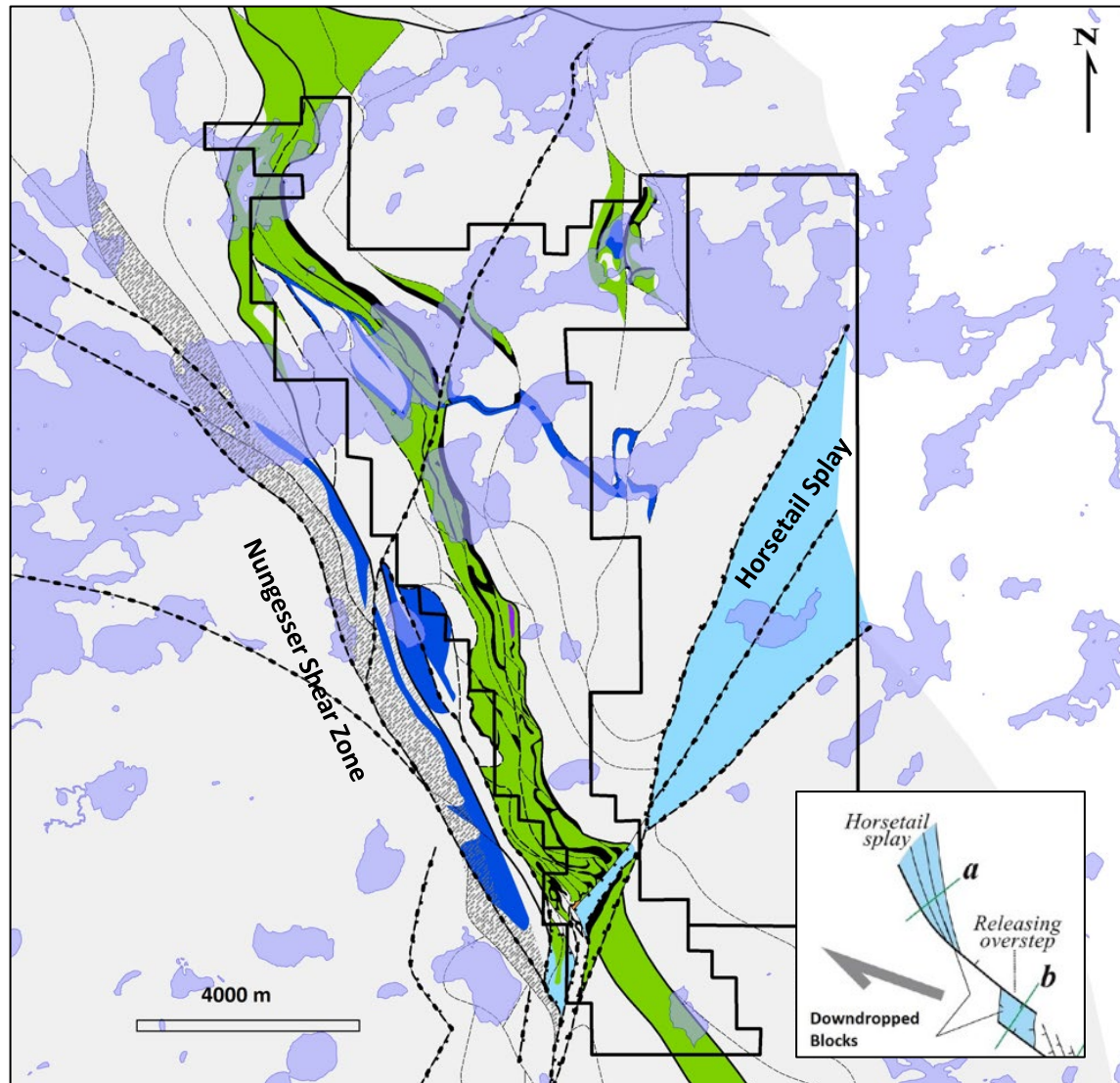
Evidence of prospectivity over the ~52km of Solstice controlled greenstone belts

- Extensive glacial overburden limits outcrop exposure
- Placer Dome scout drilling (1980s) *hit gold*
- Agnico (2008) till surveys focused on New Frontier
- OGS (2019) sampled *1.02g/t in float*
- Solstice field mapping confirms predicted structures
- A comprehensive review of historical field work and drill assessment reports was conducted
- Geochemistry (*Humus*), magnetic (*50m*) and EM (*75m*) datasets complete
- Successful in identifying prospective geology and Au-As-Sb-Hg soil signature coincident with geophysics and evolving structural model
- Targeting for Phase 1 drilling completed



# RLX – Project Geology

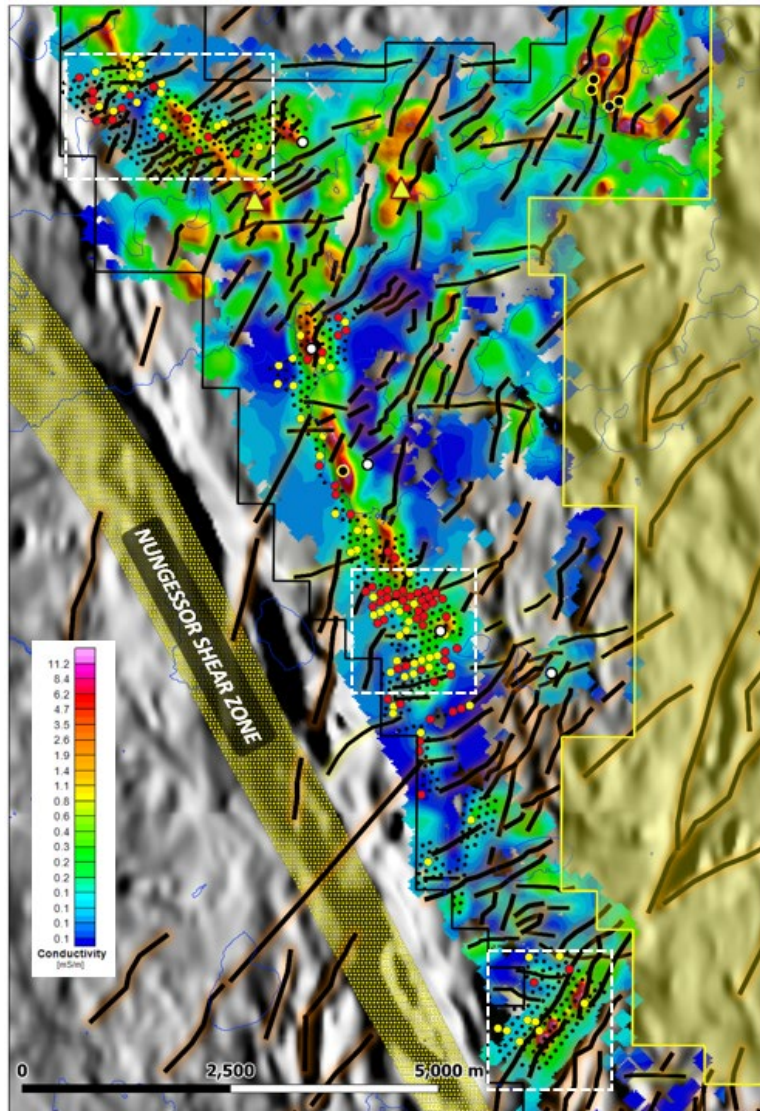
Preliminary interpretation of structure, rocks and settings for gold deposition



- Predominant regional structural trends to the NW and is highlighted by the Nungesser Shear Zone (“NSZ”)
- Some large scale and multiple smaller NE trending faults crosscut the regional fabric
- Volcanic rocks (greenstone) and iron formation (black) form a keel between the NSZ and granitic rocks to the east and are intruded by one or more sanukitoid bodies (royal blue), potential large system
- Reported sericite schist units, skarn, gold / sulfides and the classic quartz vein hosted gold in mafic volcanics are all target settings at RLX

# RLX – EM and Soils Survey (2021)

Extensive NW conductors cut by prominent NE trending EM / fault corridors



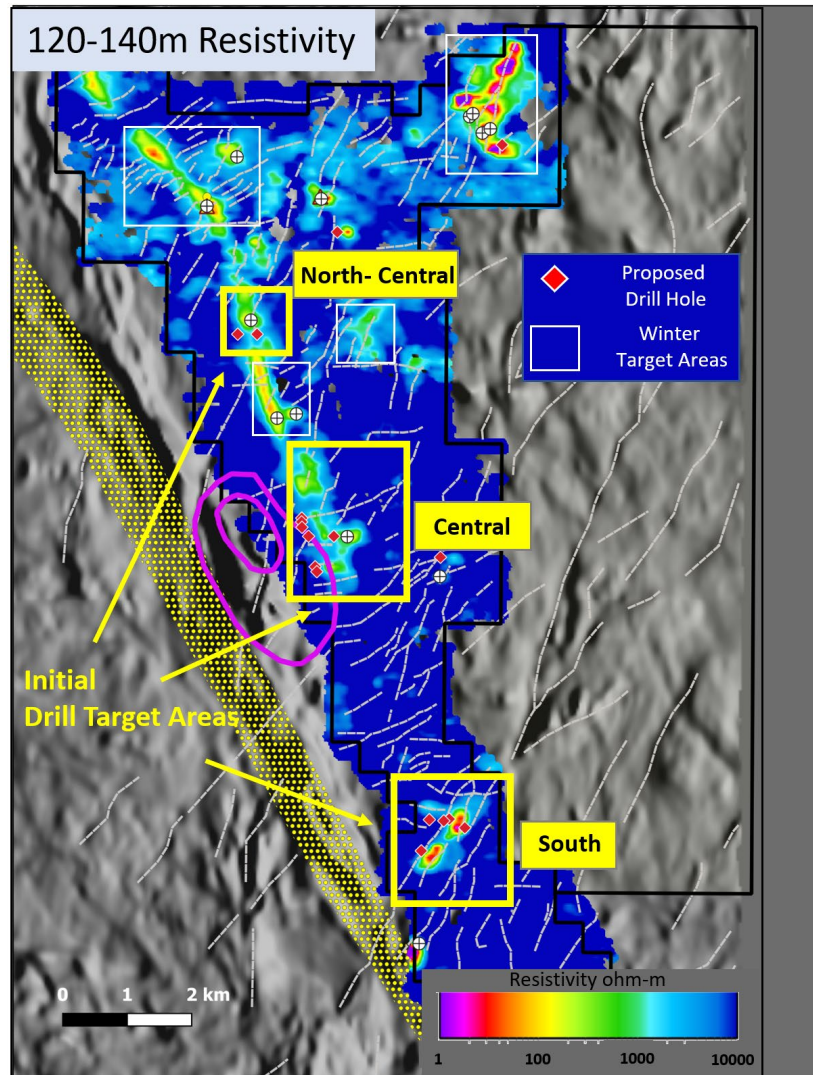
- Airborne surveys and soils conducted due to limited surface rock exposure
- Combined EM, soils and geological data infers ~16km of strike potential
- Conductivity improves with depth
- Main conductive sequence lies adjacent to the NSZ and displays variable conductivity marking the presence of Red Lake geology
- Elevated gold and pathfinder elements associated with areas of reduced conductivity which may indicate alteration of primary conductive units

- ▲ Historical drill hole with gold – partially sampled
  - Historical drill hole – target not tested or sampled with no assays reported
  - Historical drill hole – target tested, partially sampled trace gold
- Gold Ah (humus)
- > 80%ile    ● (>3.8ppb)
  - > 90%ile    ● (>5.2ppb)
  - Other samples

Figure: -80m conductivity slice of EM (75m spacing) 3D voxel with interpretation on shadowed regional OGS magnetic base. Area of new staking shown in yellow covering fault extensions. NSZ from OGS mapping.

# RLX – 2022 Drill Target Areas

Commenced drilling at the Central Target Area



- Central Target (*sanukitoid, contact metamorphism*)
  - Moderate to low resistivity (conductive)
  - Strongest geochem formed around margin of Sanukitoid (*pink*)
- South-Fold Target (*structural complexity*)
  - NE trending later fold (*F2*) cutting regional-scale NE faults
  - Planned holes into three separate areas on limbs
- North-Central Target (*key rock unit*)
  - Known sericite schist; important in our model
  - Weak EM response is consistent with low sulfide units

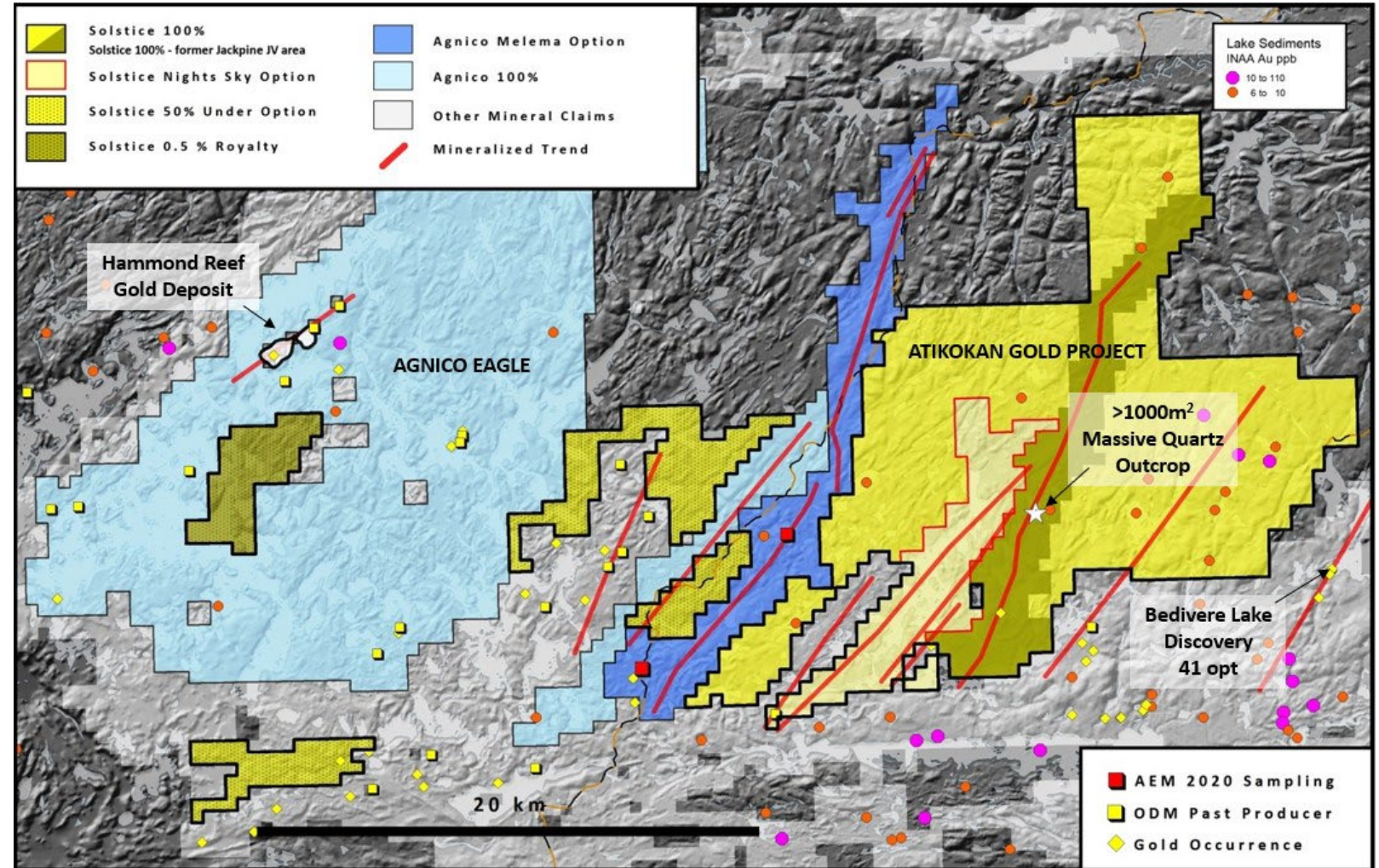
Our goal is to make new discovery outside of the traditional mine trend, guided by a new, district-scale structural model and in areas with no modern exploration

Figure: -120-140m resistivity slice, summer and winter target areas and proposed holes on shadowed regional OGS magnetic base. Area of new staking on east side shown in black covering fault extensions. NSZ from OGS mapping.

# Atikokan – Hammond Gold Camp

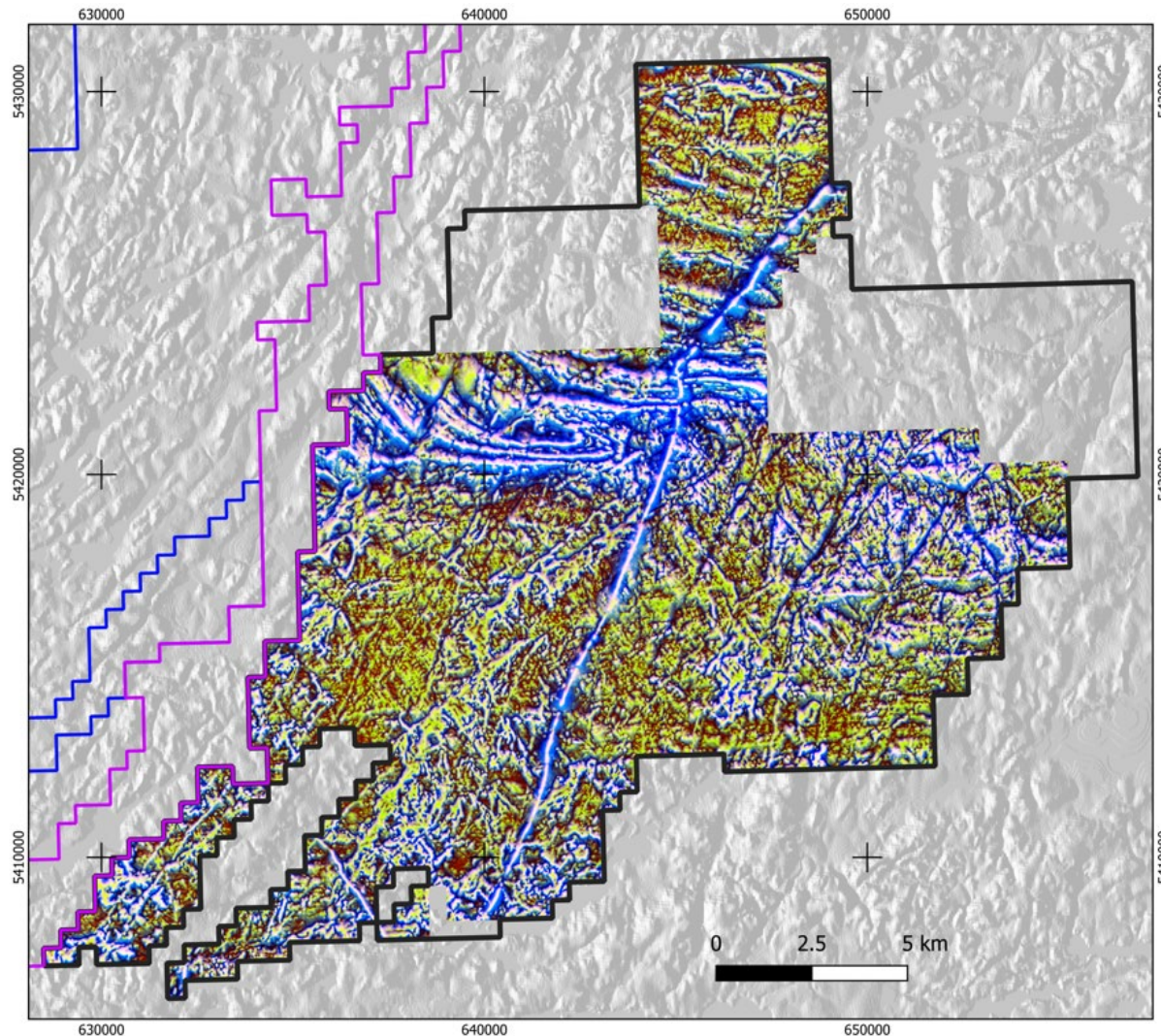
Agnico and others are building land position in this overlooked, high-grade camp

- Archean gold camp with long history of mining and exploration
- Hammond Reef is permitted
- 2016 Traxxin Gold discovery, 41 opt
- Agnico regional exploration
  - Options Melema, stripping
  - Stakes additional ground
- Solstice evaluation visit in 2020 identifies massive quartz veining
- 2022 field program underway
  - Airborne Magnetic Survey
  - Lidar / Orthophoto Survey
  - Summer Field Mapping
  - Soils Survey
- Goal for 2022 prospecting is to outline targets for a potential 2023 geophysics program



# Atikokan – Mag Survey and Key Structures

Main structures are magnetic and the focus of summer prospecting



- Illuminated areas identify the main magnetic / structural elements
- Primary feature is the Jackpine Fault
- Initial prospecting has observed 1-5% pyrite, iron carbonate alteration and quartz veining
- NE, NNE structures crossing with magnetic destruction are also targets
- Assays expected in Sept ahead of potential fall program

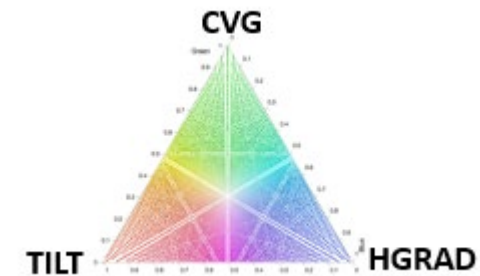
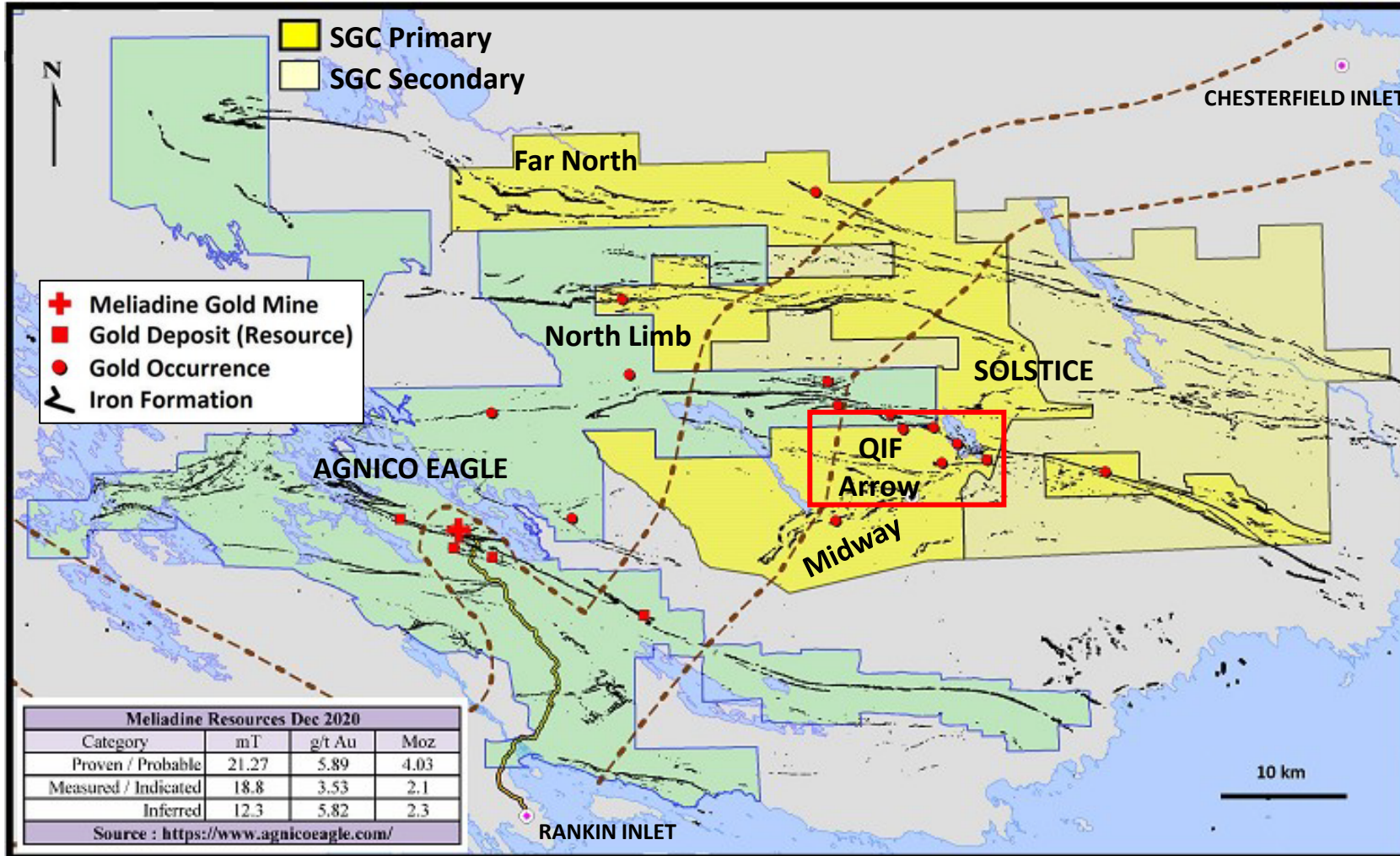


Figure: Image is a ternary image of three magnetic datasets: tilt, calculated vertical gradient (CVG) and the magnetic horizontal gradient (HGRAD)

# Qaiqtuq – Emerging Meliadine Gold Camp

Exploring for large gold deposits is best done close to supporting infrastructure

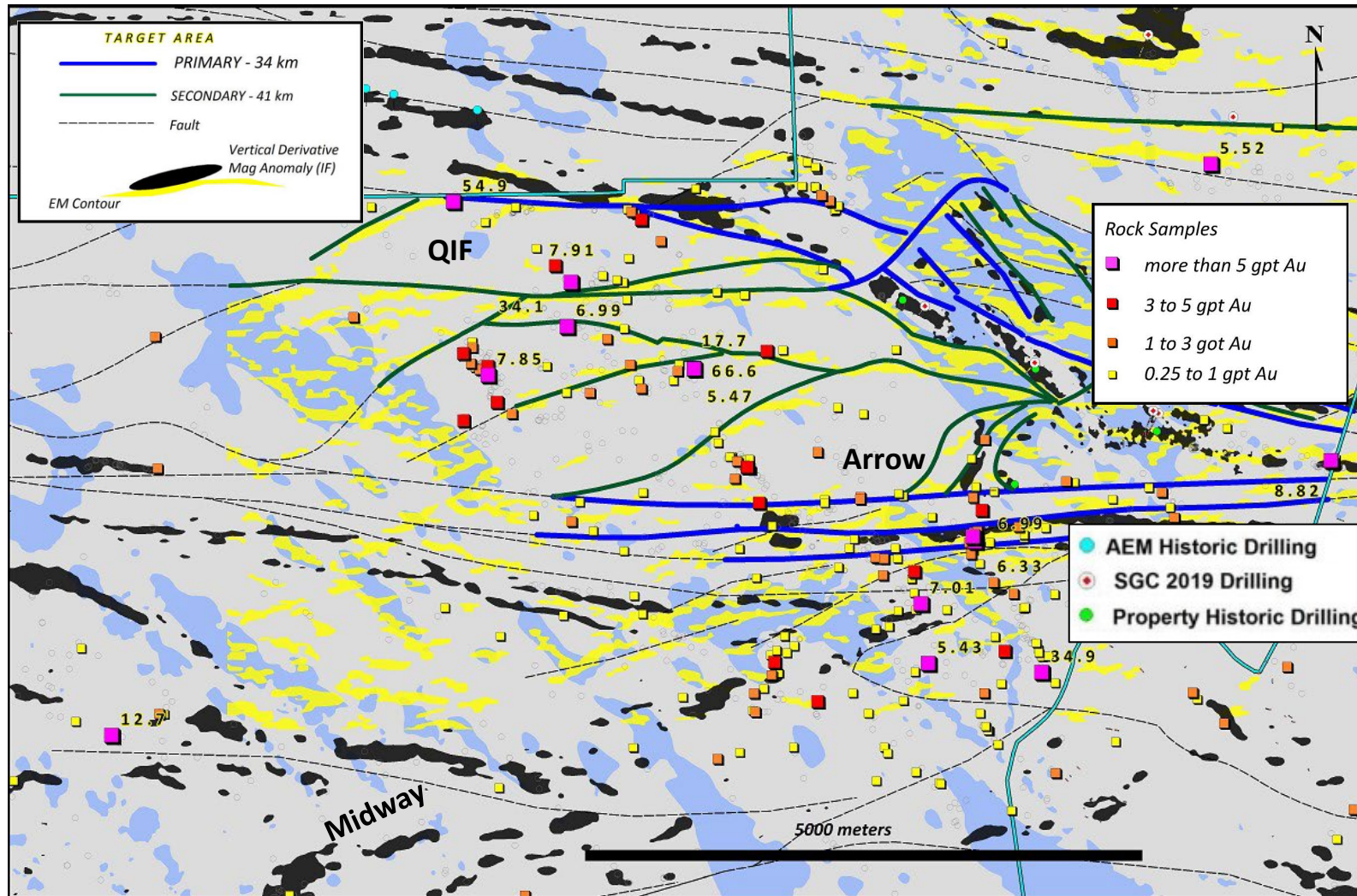


- Large, strategic land position
- 15km to Meliadine, AEM's newest operation
- >40km of gold-bearing corridors
- 26km from Rankin Inlet
  - Mine services
  - Shipping and logistics
  - Full-service airport
- The future of gold exploration in Canada is in Nunavut



# Qaiqtuq – Primary Exploration Area

Focused has been at QIF / Arrow: a classic set up for the concentration of gold



Surface Sample Highlights<sup>1</sup> (n=4,954)

Gold – g/t	Sample Type
66.6	Boulder <sup>2</sup>
54.9	Boulder
34.9	Boulder
<b>24.4</b>	<b>Outcrop</b>
17.7	Boulder
<b>12.7</b>	<b>Outcrop</b>
11.66	Boulder <sup>2</sup>
8.82	Boulder
7.91	Boulder
7.85	Boulder
7.01	Boulder
6.47	Boulder
<b>6.33</b>	<b>Outcrop</b>

1. Assay results from grab samples (boulders and outcrop) are selected samples and are not necessarily representative of the mineralization hosted on the property, 2. Samples collected by RPA (Roscoe Postle Associates Inc.) in 2018

# Exploration Activities 2022

Drilling in Red Lake and continued Atikokan prospecting

---

## Red Lake Extension Project

- Commenced Phase 1 drilling: ~5,000m
- Planning work for New Frontier

## Atikokan Gold Project

- Field program: waiting for assays
- Airborne magnetic, lidar surveys complete

## Qaiqtuq – Nunavut

- Project is fully permitted for drilling and a new camp
- Ongoing logistical planning for future drill campaigns



# Royalty and Property Portfolio in ON and QC<sup>1</sup>

Leveraging our expertise and relationships to generate and harvest value

- Potential cash inflows expected to be ~\$3.2m over next three years will partially offset G&A
- Optioning projects to increase cash position and generate new royalties for potential sale
- Low-cost exposure windfall gains from potential new discoveries by project partners – free shots on goal
- Acquisition of the portfolio resulted in our RLX project being 100% owned and royalty free

## Portfolio Snapshot

<b>82</b>	Exploration projects located in ON and QC
43	Currently optioned with cash inflows
22	Properties available for option / sale
10	Existing standalone royalties
13	Lithium assets in ON

~\$1.2 million in cash and share payments from the portfolio has been harvested creating 2 new stand-alone royalties since acquiring the portfolio in October 2021

# Outlook & Catalysts

A great way to create value is to find it

---

- RLX drill results in September
- Field assays pending for Atikokan prospecting
- Active on deals from property portfolio
- Reviewing strategies to unlock value at Qaiqtuq near Meliadine
- Market engagement to intensify throughout the year



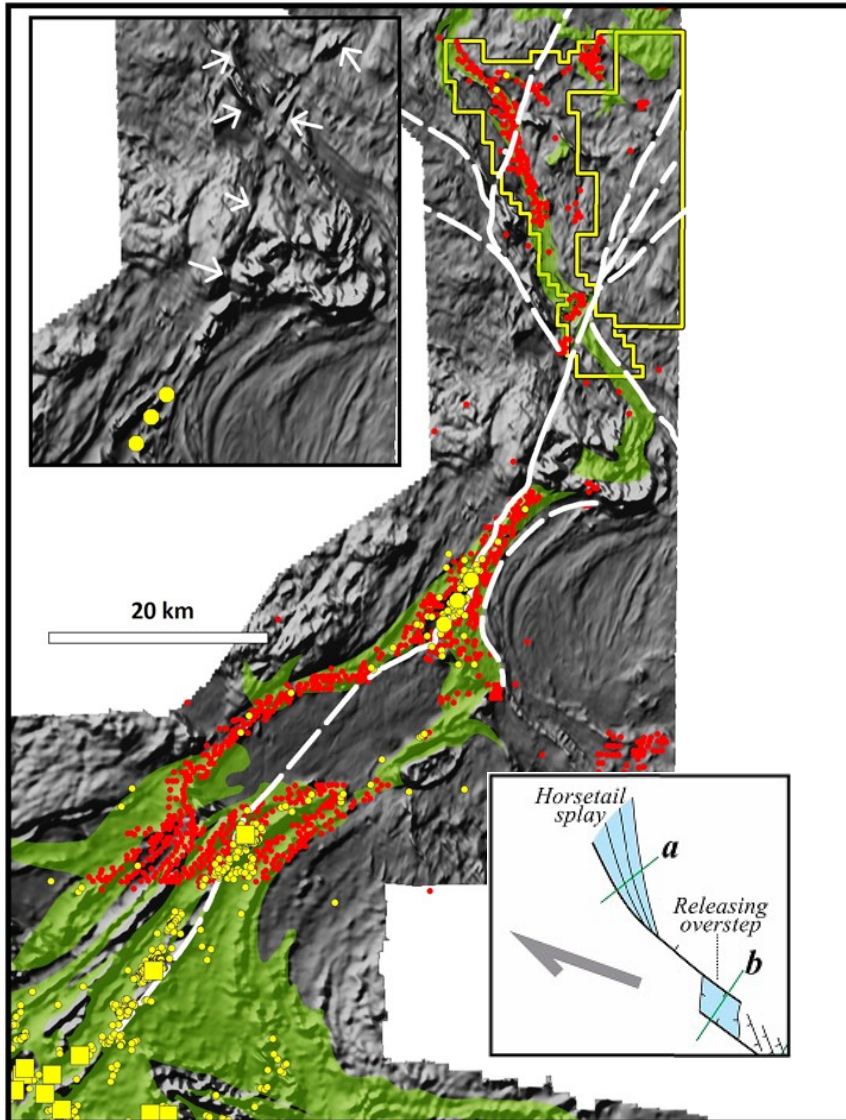


Investor Relations  
604 283 7234  
[info@solsticegold.com](mailto:info@solsticegold.com)

SGC.V

# Red Lake - Gold Occurrences and EM Conductors

New conceptual framework for RLX with extensional structural features mapped



Empirical evidence also supports camp extensions

- Past producers, active miners and assessment drill holes (in yellow) outline the trend to the north
- 2008 OGS conductors (in red) tie with gold occurrences and link the whole region
- 2021 Field program confirms predicted structures, evidence of fault extensional features as well as the presence of mantle-derived sanukitoid minerals (high-Mg)
- Balmer aged rocks hosting mines present through the Sidace sequence and continues north into RLX