



Poised for Discovery in Premier Gold Camps

October 2022

SGC.V

Forward Looking Statements

This document contains certain forward-looking statements (“FLS”) relating but not limited to Solstice Gold Corp.’s (the “**Company**” or “**Solstice**”) expectations, intentions, plans and beliefs. FLS can often be identified by forward-looking words such as “emerging”, “goal”, “plan”, “intent”, “estimate”, “expects”, “scheduled”, “may” and “will” or similar words suggesting future outcomes, outlooks, or other expectations, beliefs, plans, objectives, assumptions, intentions or statements about future events, performance or treasury levels. FLS in this presentation also include, but are not limited to: potential prospects in relation to certain exploration properties and potential for discovery, including potential for gold deposits and the scale and grade thereof; statements regarding exploration programs and activities and the focus, extent and timing thereof, such as drilling, geophysics, rock sampling and till sampling; expected phases of growth; expected or potential cash flows; the possibility of optioning properties and the resulting cash position and generation of royalties; potential sales; and pending exploration results. The Company may adjust any work program, drilling or other planned activities, described in this presentation as it feels necessary based on results and other operational factors. There can be no guarantee that continued exploration at any of the Company’s exploration properties, each of which is at an early stage of exploration, will lead to the discovery of an economic gold deposit. Geological interpretations are considered FLS and are subject to change based on additional data and/or analysis.

Stakeholders, shareholders and prospective new investors should be aware that these statements are subject to known and unknown risks, uncertainties and other factors that could cause actual results to differ materially from those suggested by the FLS. Factors that could cause actual results to differ materially from any FLS include, but are not limited to, delays in obtaining or failures to obtain required governmental, environmental or other project approvals, inflation, changes in exchange rates, fluctuations in commodity prices, delays in the development of projects, risks related to COVID-19 and any variants thereof, and other factors. Shareholders are cautioned not to place undue reliance on FLS. By its nature, FLS involve numerous assumptions, inherent risks and uncertainties, both general and specific, that contribute to the possibility that the predictions, forecasts, projections and various future events will not occur including, the Company’s ability to execute present and future business strategies; exploration performance within expected ranges; anticipated future cash inflows; local and global economic conditions and the environment in which Solstice conducts its activities in the future; the price of gold, copper, silver and other key commodities; projected mineral grades; international exchange rates; anticipated exploration costs; the availability and timing of required stock exchange, regulatory, governmental and other approvals. Solstice undertakes no obligation to update publicly or otherwise revise any FLS whether as a result of new information, future events or other such factors which affect this information, except as required by law.

This presentation contains information with respect to adjacent or similar mineral properties in respect of which the Company has no interest or rights to explore or mine. Readers are cautioned that the Company has no interest in or right to acquire any interest in any such properties, and that mineral deposits on adjacent or similar properties are not indicative of mineral deposits on the Company’s properties. Past performance is no guarantee of future performance, and all investors are urged to consult their investment professionals before making an investment decision.

Sandy Barham, P.Geo., is the Qualified Person as defined by NI 43-101 standards responsible for reviewing and approving the technical content of this presentation.

Investment Highlights

Shareholders well positioned with three district-scale gold opportunities

- Focused on established, tier one mining regions in Canada
- Large under explored properties on world class gold belts
- Experience team with gold discoveries and camp expertise
- Actively drilling the Red Lake Extension (RLX) project

Management and Board

Owners team in place to take company through its next phase of growth

MANAGEMENT

Mike Timmins
CEO, Director

David Fischer
CFO

Pablo McDonald
Exploration Manager

Sandy Barham
Sr. Geologist
Meliadine Discovery

Sirena Jacobson
Project Geologist

BOARD OF DIRECTORS

David Adamson, Ph.D.
Board Chair
Bateman Discovery

Blair Schultz
Lead Independent Director
Chair of Audit Committee

Lisa Doddridge
Independent Director
Chair of ESG Committee

Michael Gentile
Independent Director

- Team with Two Major Gold Discoveries
- Direct Experience on the Ground
- Capital Markets Access and Expertise
- Management and Board own ~23%

As of August 31, 2022	(million)
Shares Outstanding	185.7
Warrants (WAEP \$0.16)	18.9
Options (WAEP \$0.18)	13.9

Exploration Assets – World Class Discovery Potential

Active in prospective gold exploration properties in Canada



Red Lake Extension – Drilling

- Control of ~52km of greenstone structures in the NW Camp
- Identifiable deep-tapping structures underpin mines and projects
- Limited regional exploration attracting more investment dollars
- Companies still making new discoveries with new paradigms

Atikokan Gold Project – Prospecting Underway

- 225km² property position in the Hammond Gold Camp
- Rare opportunity in Archean terrain with limited exploration
- Multiple, prospective and mineralized corridors

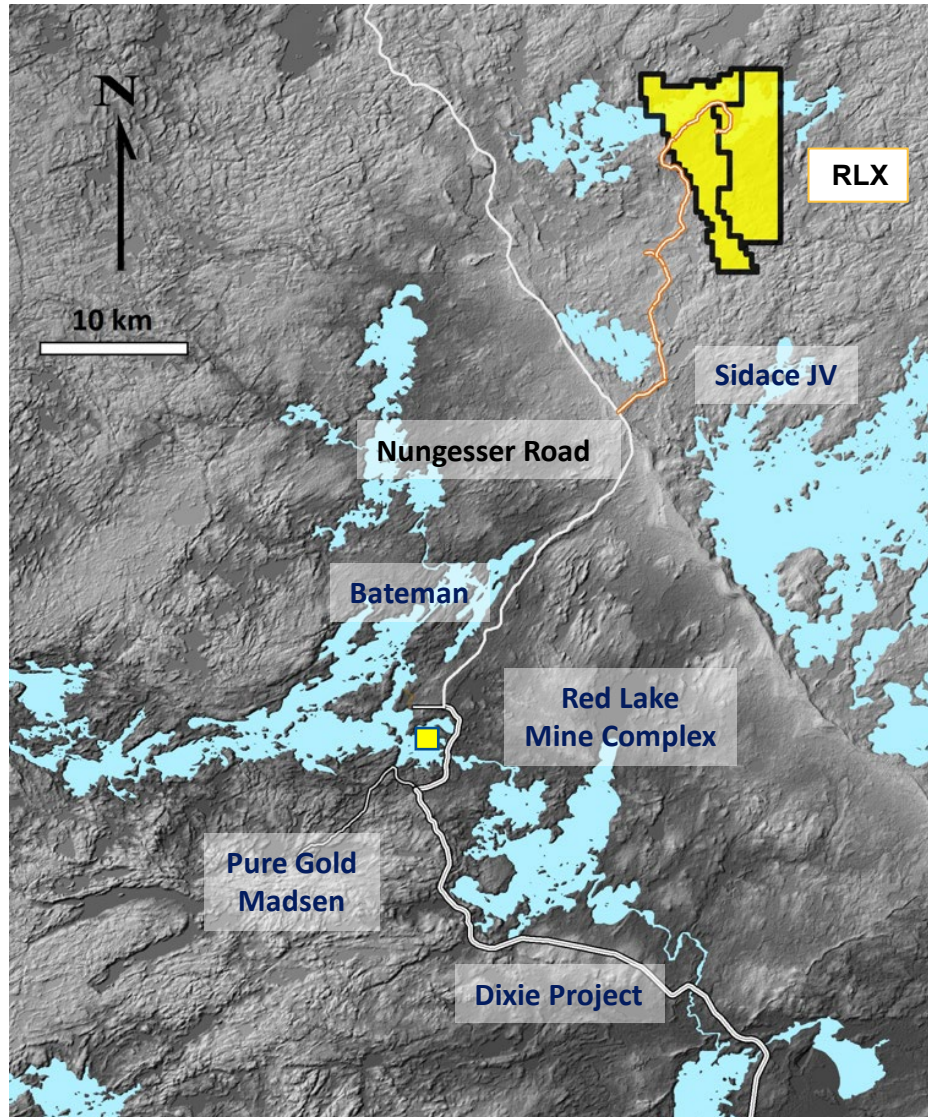
Qaiqtuq, Nunavut – Planning and Logistics

- Kilometers of gold-bearing structures in Meliadine Camp
- Prime hunting ground for the next discovery in the region
- ~29Moz¹: Back River, Meliadine, Hope Bay, Amaruq deposits
- Nunavut in early stages of mineral development

¹ Mineral reserve and resource statements from company websites

Red Lake Extension Project (RLX)

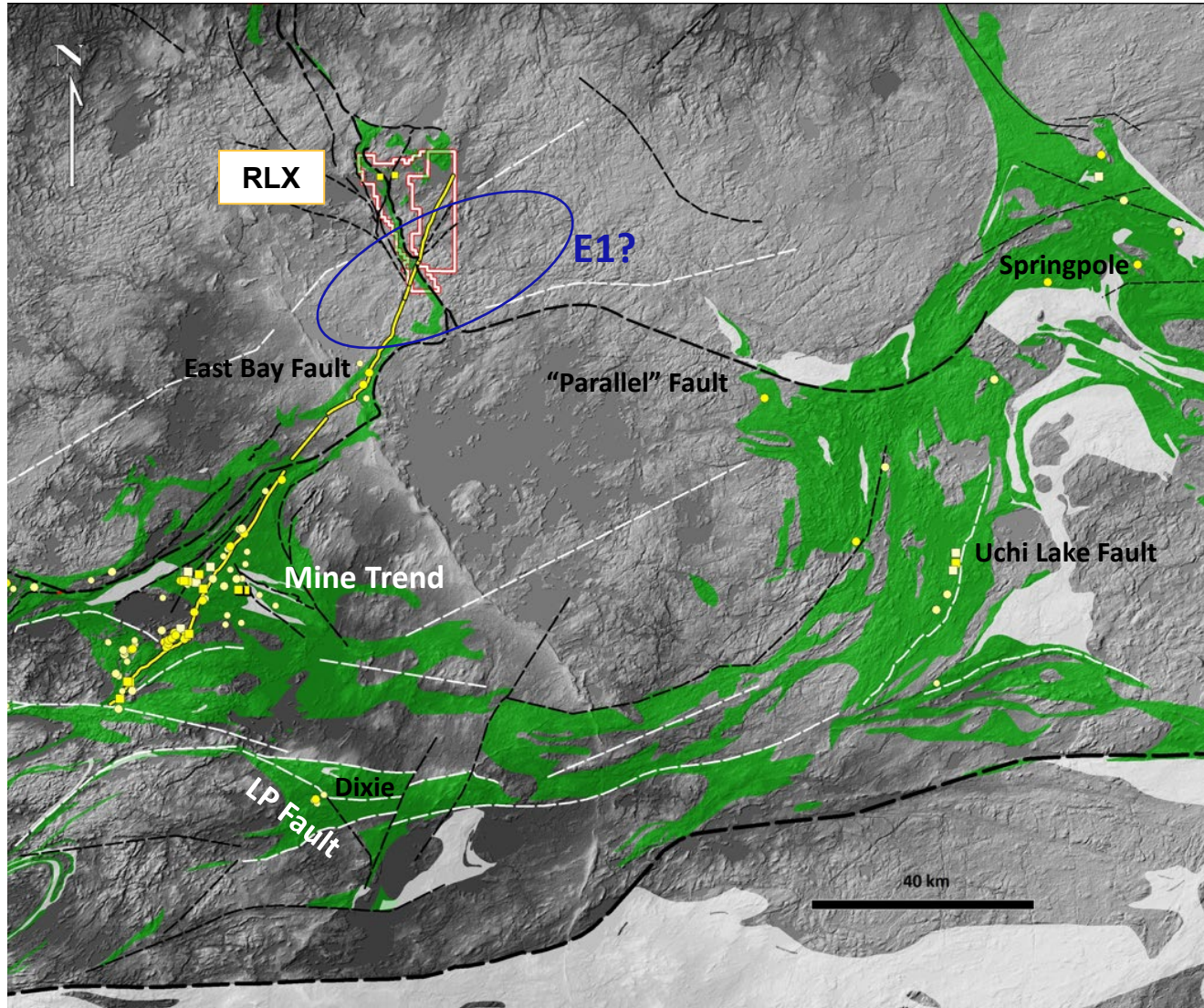
Lead recent staking rush in the NW corner of this established mining camp



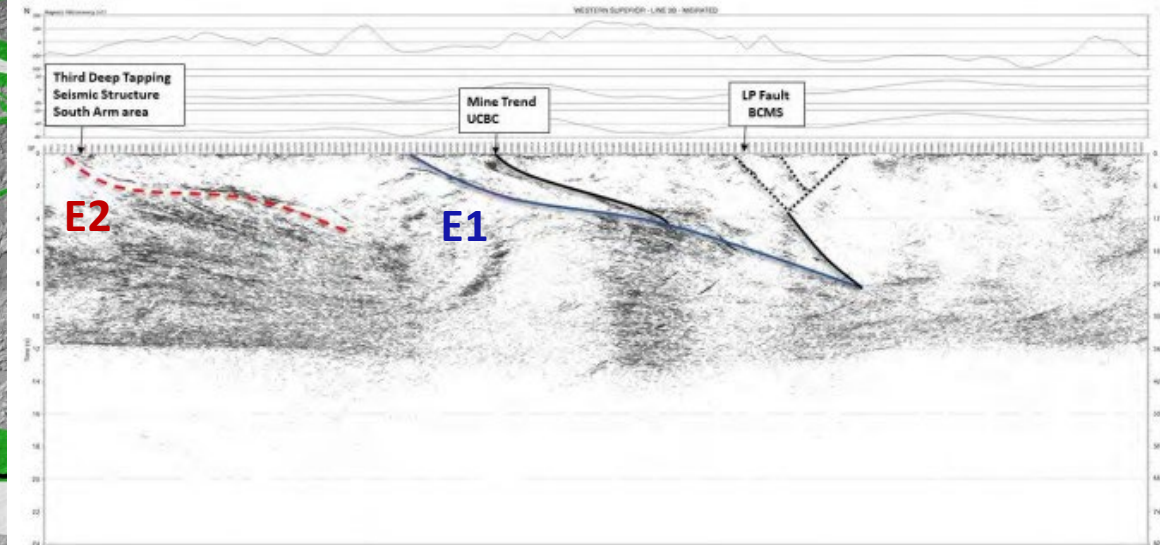
- >80 years of exploration, development and >30 Moz of gold production means low risk and excellent infrastructure
- Recent M&A, exploration discoveries and new mine development signal camp resurgence
 - Evolution and Kinross making large acquisitions
 - Pure Gold (Anglo ~19.9%) puts mine online
 - Barrick secures large exploration property in Camp
 - Many juniors attracted by limited investment in regional exploration outside of the traditional mine trend
- RLX is 45km from the Mine Complex with access via Nungesser Road and covers an important area of the Camp where the potential has only recently been identified
- Project hosts a suite of gold-bearing structures at the **confluence of major regional faults** and with similar geology and chemistry to other deposits in the area

Red Lake Camp – Architecture

2004 seismic identifies crustal-scale features that likely introduced gold



- Calvert¹ determined orientation of structure at depth, our extrapolated surface projection is close to RLX
- Jan '21 OGS² studied the raw survey data; new interp also identifies a third significant structure project to surface north of Red Lake which led to the 2021 staking rush

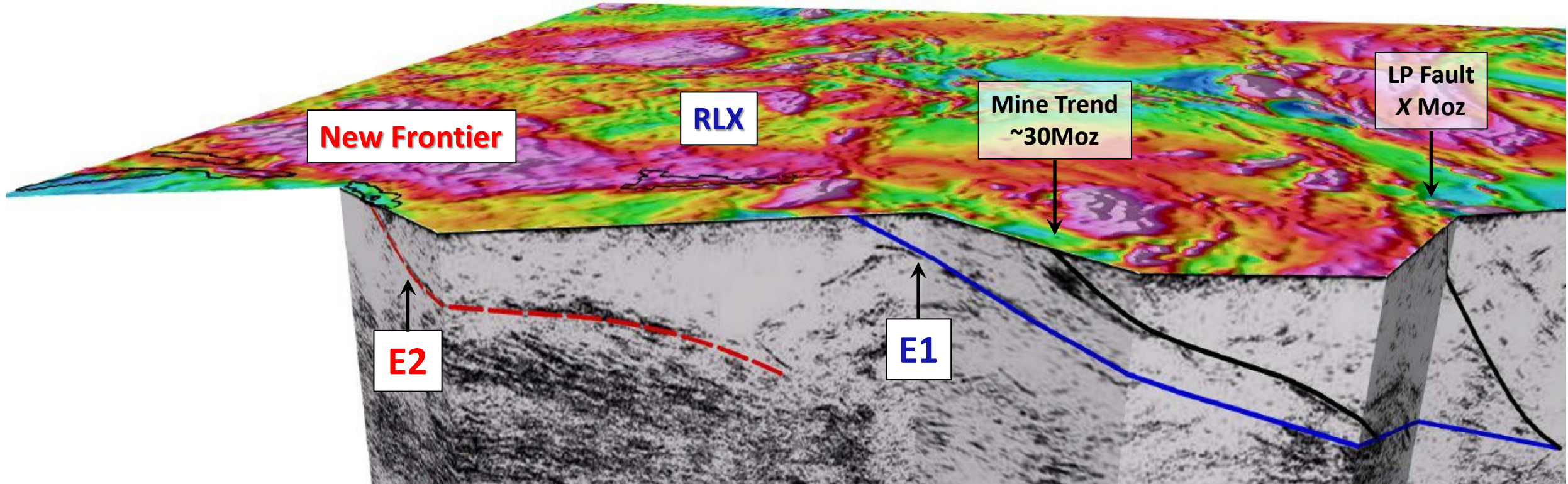


¹ Calvert, Andrew J. and Cruden, Alexander R. 2004. Seismic evidence for the preservation of the Archean Uchi granite-greenstone belt by crustal-scale extension. *Tectonophysics* 388 p.135-143

² Lewis, S.O. 2021. Deep tapping seismic structure in the Red Lake district; in Ontario Geological Survey, Resident Geologist Program, Recommendations for Exploration 2020-2021, p.9-13.

Solstice Land Position – Underlying Structure

Most fundamental structures that underpin the camp have limited exploration

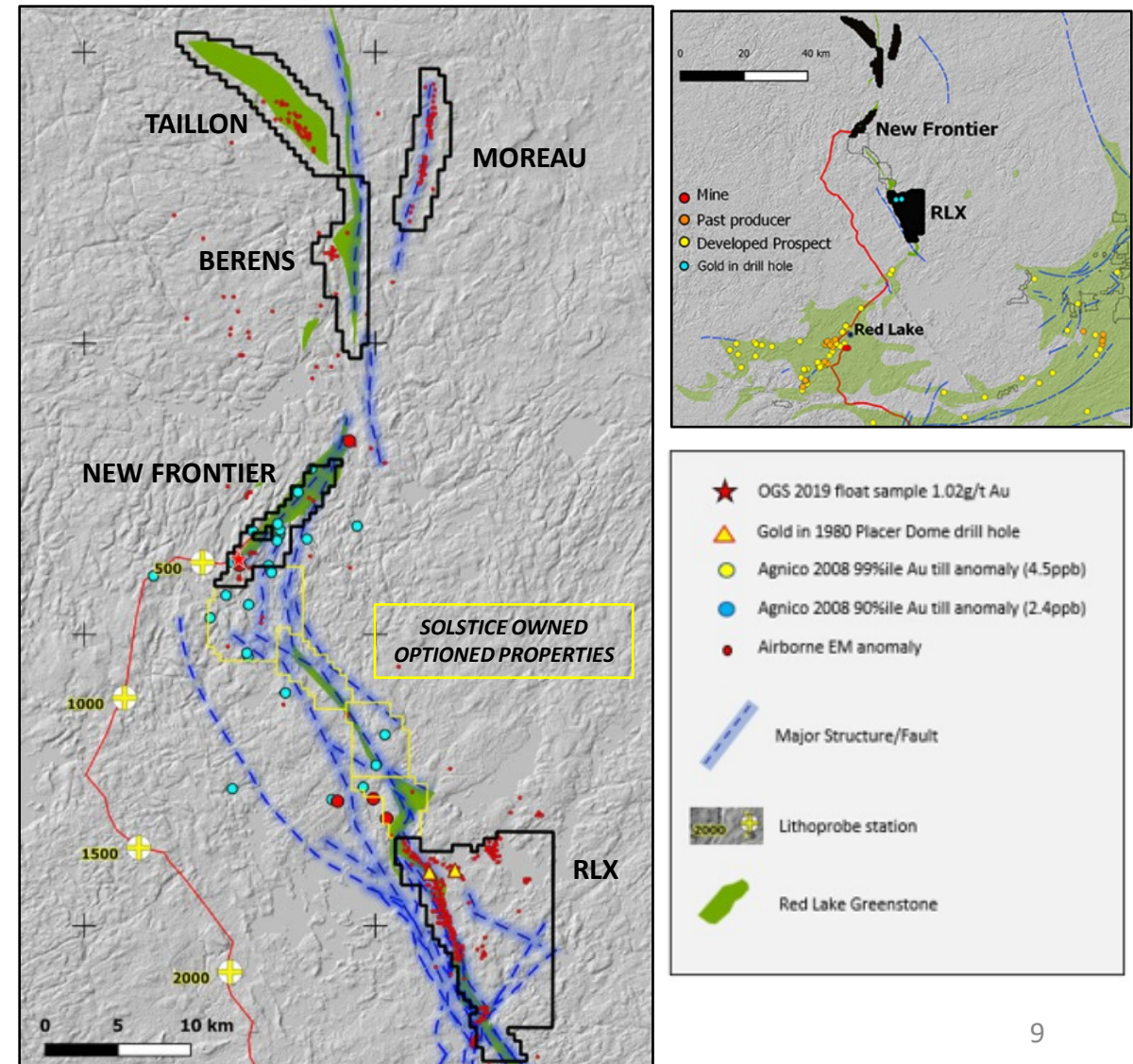


- Third party interpreted E1 and E2 are fundamental structures with limited modern exploration
- Seismic features are crustal scale and proximal to mapped mantle-derived Sanukitoid suite of intrusives
- Evolution, Barrick and Kinross have large exploration projects on trend or to the south; Solstice controls the north

RLX – Property Areas and Previous Work

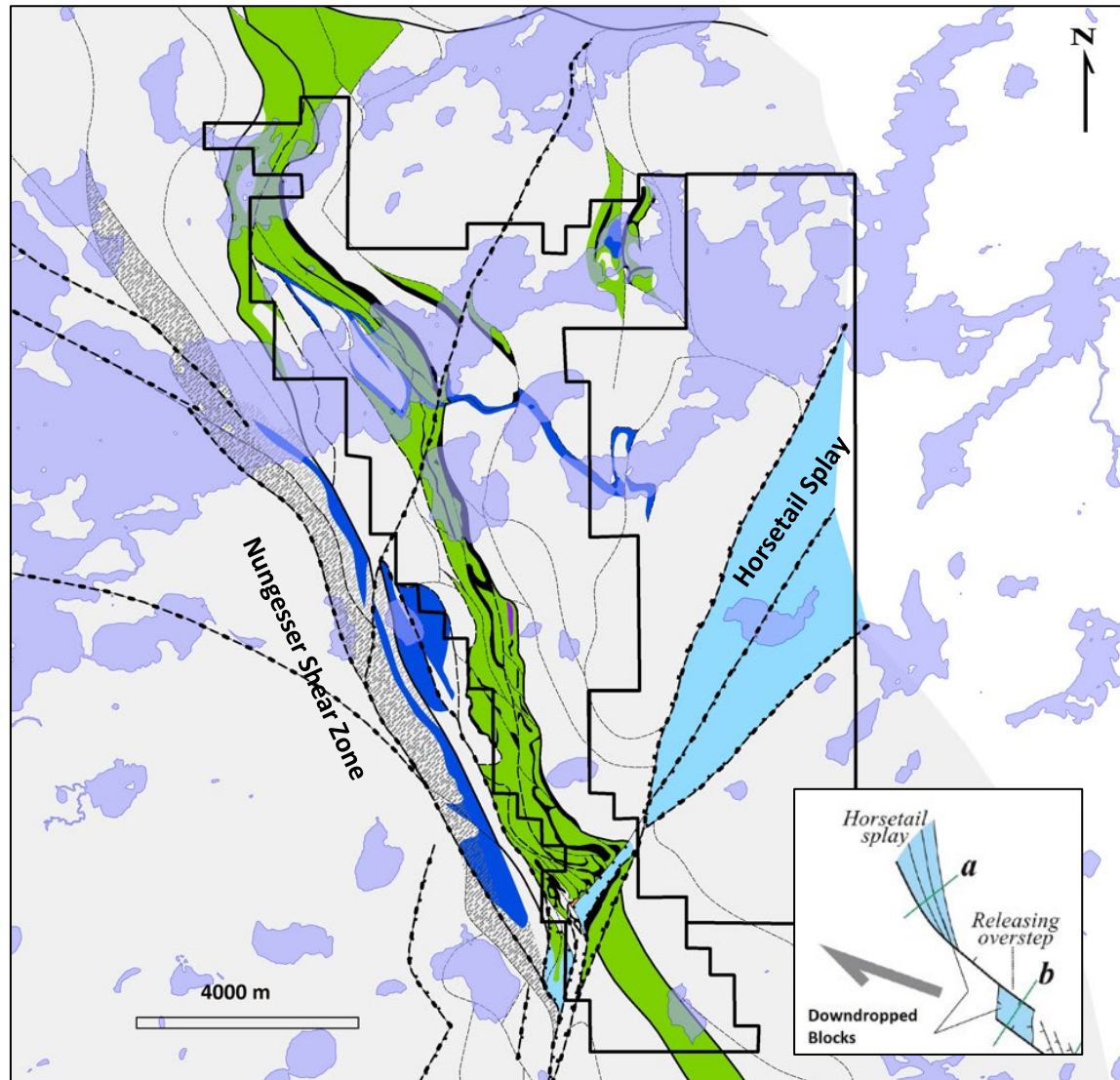
Evidence of prospectivity over the ~52km of Solstice controlled greenstone belts

- Extensive glacial overburden limits outcrop exposure
- Placer Dome scout drilling (1980s) *hit gold*
- Agnico (2008) till surveys focused on New Frontier
- OGS (2019) sampled *1.02g/t in float*
- Solstice field mapping confirms predicted structures
- A comprehensive review of historical field work and drill assessment reports was conducted
- Geochemistry (*Humus*), magnetic (*50m*) and EM (*75m*) datasets complete
- Successful in identifying prospective geology and Au-As-Sb-Hg soil signature coincident with geophysics and evolving structural model
- Targeting for Phase 1 drilling completed



RLX – Project Geology

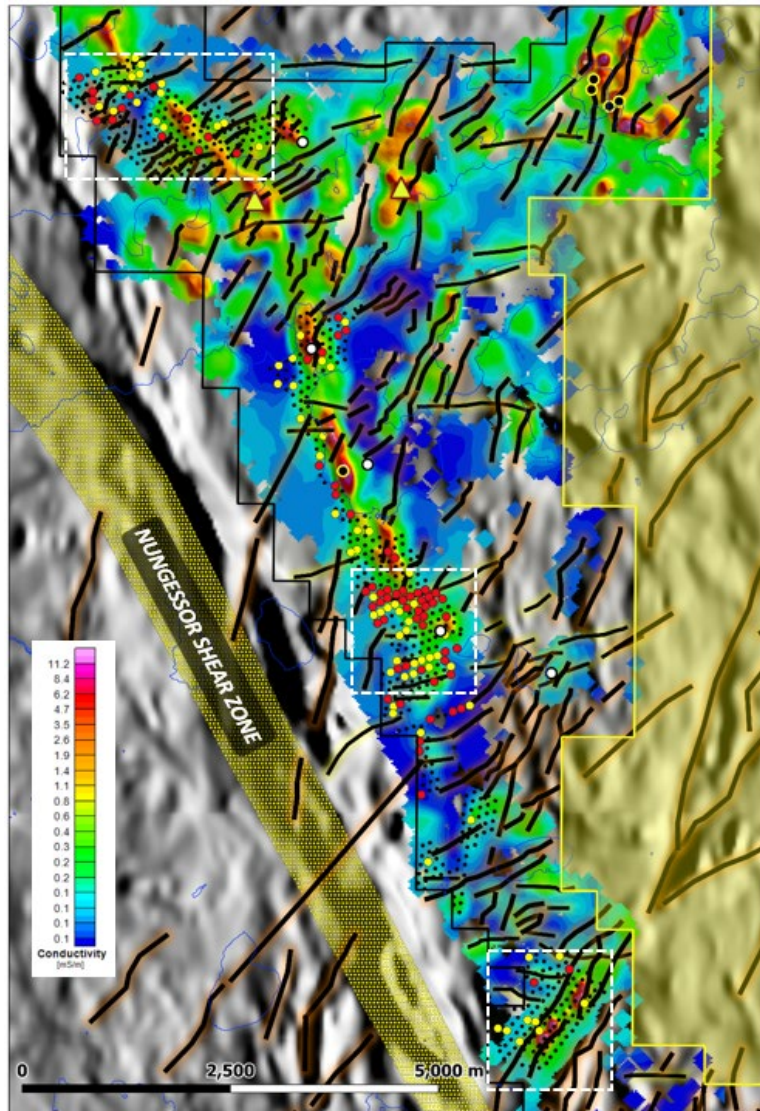
Preliminary interpretation of structure, rocks and settings for gold deposition



- Predominant regional structural trends to the NW and is highlighted by the Nungesser Shear Zone (“NSZ”)
- Some large scale and multiple smaller NE trending faults crosscut the regional fabric
- Volcanic rocks (greenstone) and iron formation (black) form a keel between the NSZ and granitic rocks to the east and are intruded by one or more sanukitoid bodies (royal blue), potential large system
- Reported sericite schist units, skarn, gold / sulfides and the classic quartz vein hosted gold in mafic volcanics are all target settings at RLX

RLX – EM and Soils Survey (2021)

Extensive NW conductors cut by prominent NE trending EM / fault corridors



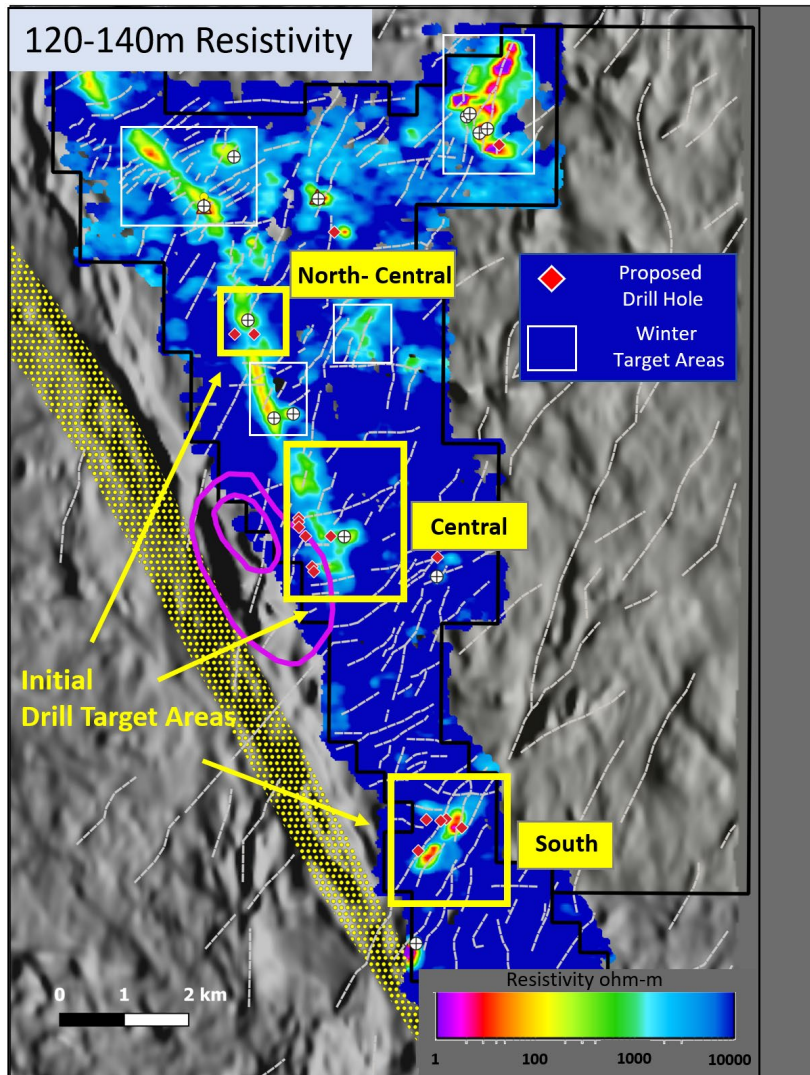
- Airborne surveys and soils conducted due to limited surface rock exposure
- Combined EM, soils and geological data infers ~16km of strike potential
- Conductivity improves with depth
- Main conductive sequence lies adjacent to the NSZ and displays variable conductivity marking the presence of Red Lake geology
- Elevated gold and pathfinder elements associated with areas of reduced conductivity which may indicate alteration of primary conductive units

- ▲ Historical drill hole with gold – partially sampled
 - Historical drill hole – target not tested or sampled with no assays reported
 - Historical drill hole – target tested, partially sampled trace gold
- Gold Ah (humus)
- > 80%ile ● (>3.8ppb)
 - > 90%ile ● (>5.2ppb)
 - Other samples

Figure: -80m conductivity slice of EM (75m spacing) 3D voxel with interpretation on shadowed regional OGS magnetic base. Area of new staking shown in yellow covering fault extensions. NSZ from OGS mapping.

RLX – 2022 Drill Target Areas

Phase 1 Drilling focused on Central and North-Central Targets – 11 Drill Holes



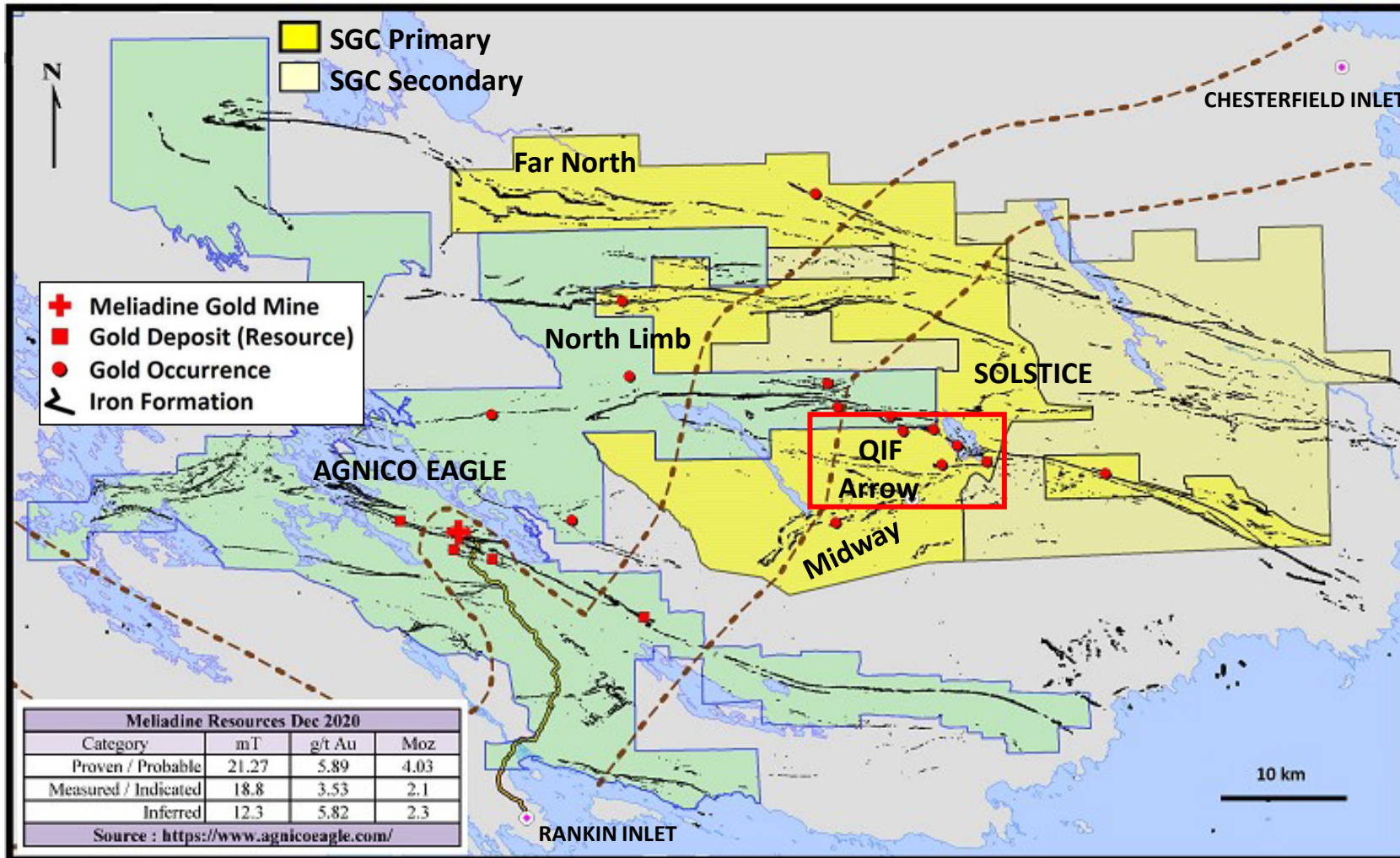
- Central Target (*sanukitoid, contact metamorphism*)
 - Moderate to low resistivity (conductive)
 - Strongest geochem formed around margin of Sanukitoid (*pink*)
- North-Central Target (*key rock unit*)
 - Known sericite schist; important in our model
 - Weak EM response is consistent with low sulfide units
- South-Fold Target (*structural complexity*)
 - NE trending later fold (*F2*) cutting regional-scale NE faults
 - Planned holes into three separate areas on limbs

Our goal is to make new discovery outside of the traditional mine trend, guided by a new, district-scale structural model and in areas with no modern exploration

Figure: -120-140m resistivity slice, summer and winter target areas and proposed holes on shadowed regional OGS magnetic base. Area of new staking on east side shown in black covering fault extensions. NSZ from OGS mapping.

Qaiqtuq – Emerging Meliadine Gold Camp

Exploring for large gold deposits is best done close to supporting infrastructure

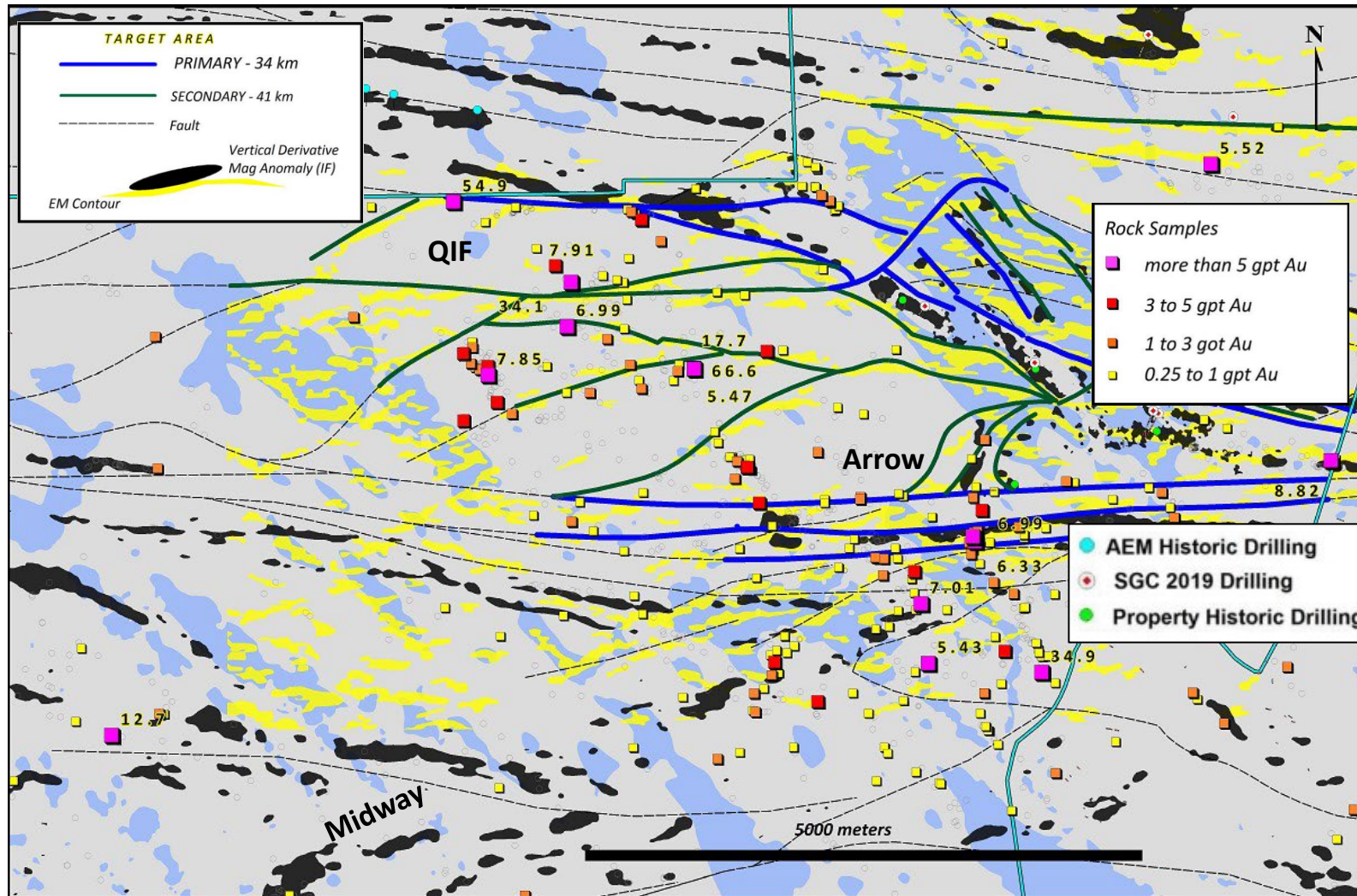


- Large, strategic land position
- 15km to Meliadine, AEM's newest operation
- >40km of gold-bearing corridors
- 26km from Rankin Inlet
 - Mine services
 - Shipping and logistics
 - Full-service airport
- The future of gold exploration in Canada is in Nunavut

1. Primary claim block is 886 km² , Secondary claim block with exclusive gold rights over an additional 683 km²

Qaiqtuq – Primary Exploration Area

Focused has been at QIF / Arrow: a classic set up for the concentration of gold



Surface Sample Highlights¹ (n=4,954)

Gold – g/t	Sample Type
66.6	Boulder ²
54.9	Boulder
34.9	Boulder
24.4	Outcrop
17.7	Boulder
12.7	Outcrop
11.66	Boulder ²
8.82	Boulder
7.91	Boulder
7.85	Boulder
7.01	Boulder
6.47	Boulder
6.33	Outcrop

1. Assay results from grab samples (boulders and outcrop) are selected samples and are not necessarily representative of the mineralization hosted on the property, 2. Samples collected by RPA (Roscoe Postle Associates Inc.) in 2018

Exploration Activities 2022

Drilling in Red Lake heads up our active exploration pipeline

Red Lake Extension (RLX) Project

- Phase 1 drilling near complete: ~5,000m
 - Assays pending on 11 holes
- Phase 2 winter drill campaign to begin in late Q4

Atikokan Gold Project

- Field program: waiting for assays
- Airborne magnetic, lidar surveys complete

Qaiqtuq – Nunavut

- Project is fully permitted for drilling and a new camp
- Ongoing logistical planning for future drill campaigns



Royalty and Property Portfolio in ON and QC¹

Leveraging our expertise and relationships to generate and harvest value

- Potential cash inflows expected to be ~\$3m over next three years will partially offset G&A
- Optioning projects to increase cash position and generate new royalties for potential sale
- Low-cost exposure windfall gains from potential new discoveries by project partners – free shots on goal
- Acquisition of the portfolio resulted in our RLX project being 100% owned and royalty free

Portfolio Snapshot

82	Exploration projects located in ON and QC
43	Currently optioned with cash inflows
22	Properties available for option / sale
10	Standalone early-stage royalties
13	Lithium assets in ON

~\$1.3 million in cash and share payments from the portfolio has been harvested creating 2 new stand-alone royalties since acquiring the portfolio in October 2021

Outlook & Catalysts

A great way to create value is to find it

- RLX assay results throughout Q4
- Active on deals from property portfolio
- Reviewing strategies to unlock value at Qaiqtuq
- Market engagement to intensify throughout the year



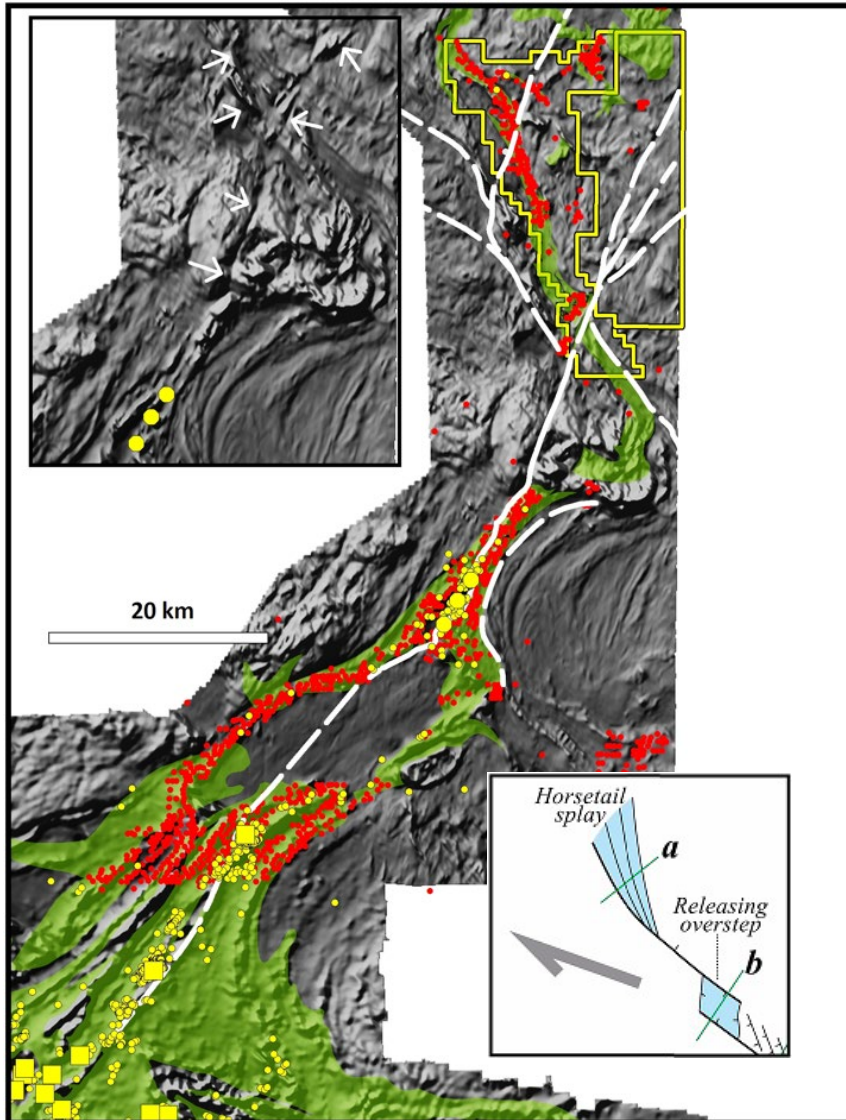


Investor Relations
604 283 7234
info@solsticegold.com

SGC.V

Red Lake - Gold Occurrences and EM Conductors

New conceptual framework for RLX with extensional structural features mapped



Empirical evidence also supports camp extensions

- Past producers, active miners and assessment drill holes (in yellow) outline the trend to the north
- 2008 OGS conductors (in red) tie with gold occurrences and link the whole region
- 2021 Field program confirms predicted structures, evidence of fault extensional features as well as the presence of mantle-derived sanukitoid minerals (high-Mg)
- Balmer aged rocks hosting mines present through the Sidace sequence and continues north into RLX