



Strathy Gold Project  
Technical Presentation – Red Cedar Zone Level Plans

SGC-TSX.V

June 2026

# Forward Looking Statements

---

This presentation contains certain forward-looking statements (“FLS”) including, but not limited to the need for more prospecting and analysis, that the geological and structural setting at SGP is highly prospective for gold mineralization, the focus of follow-up efforts on promising geochemical and mineralogical anomalies, the potential for gold anomalies in samples to be high, and the extension of a drilling program this year. FLS can often be identified by forward-looking words such as “approximate or (~)”, “emerging”, “goal”, “plan”, “intent”, “estimate”, “expects”, “potential”, “scheduled”, “may” and “will” or similar words suggesting future outcomes or other expectations, beliefs, plans, objectives, assumptions, intentions or statements about future events or performance. In respect of the FLS, the Company has made certain assumptions that management believes are reasonable at this time. The assumptions include that the Company will have sufficient financial resources for sampling and prospecting this year, that gold discoveries will be to the level anticipated however, there can be no assurance that such assumptions and statements will prove to be accurate and actual results could differ materially from those anticipated in such statements. Factors that could cause actual results to differ materially from any FLS include, but are not limited to, limited capital or access to additional capital for prospecting, delays in obtaining or failures to obtain required TSXV, governmental, environmental or other project approvals, inflation, changes in exchange rates, fluctuations in commodity prices, delays in the development of projects, regulatory approvals and other factors. FLS are subject to risks, uncertainties and other factors that could cause actual results to differ materially from expected results.

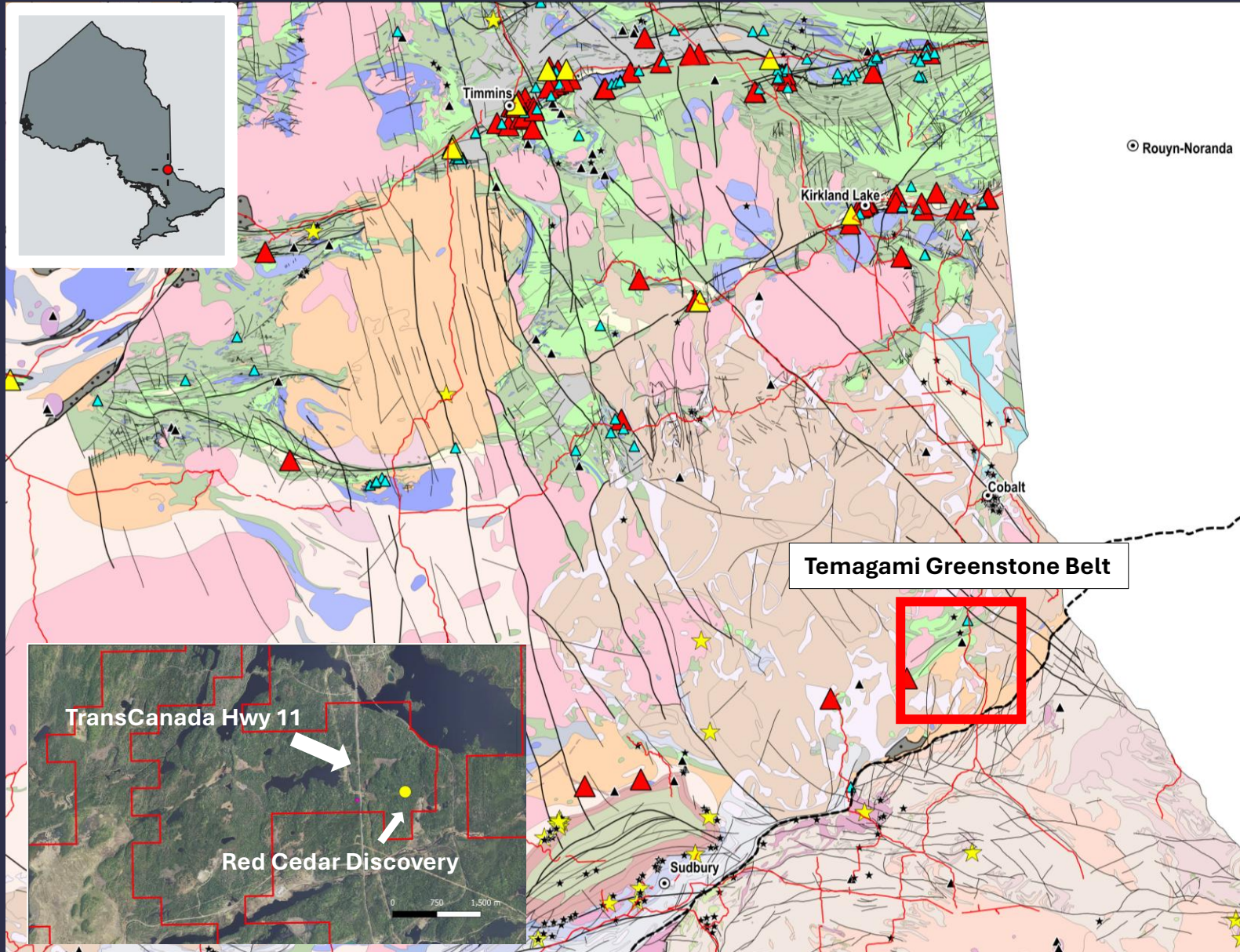
Potential shareholders and prospective investors should be aware that these statements are subject to known and unknown risks, uncertainties and other factors that could cause actual results to differ materially from those suggested by the FLS. Shareholders are cautioned not to place undue reliance on FLS. By their nature FLS involve numerous assumptions, inherent risks and uncertainties, both general and specific that contribute to the possibility that the predictions, forecasts, projections and various future events will not occur. Solstice undertakes no obligation to update publicly or otherwise revise any FLS whether as a result of new information, future events or other such factors which affect this information, except as required by law.

## **Historical Sampling and Drilling Data and Information**

Some sampling and drilling data and information presented on slide 8 of this presentation (the “Historical Exploration Information”) is historical in nature. The reader is cautioned that the Historical Exploration Information is based on prior data and reports previously prepared by third parties without the involvement of Solstice. Solstice has not undertaken any independent investigation, nor has it independently analyzed the results of the Historical Exploration Information in order to verify the results. The reader is cautioned not to treat Historical Exploration Information, or any part of it, as current and that a qualified person has not done sufficient work to verify the results and that they may not form a reliable guide to future results. No independent quality assurance/quality control protocols are known for these historic samples and drill holes and therefore the Historical Exploration Information may be unreliable. Solstice considers these historical drill results relevant as the Company will use this data as a guide to plan future exploration and drilling programs. Solstice considers the data to be reliable for these purposes, however, the Company's future exploration work will include verification of the data through drilling.

**Paul Chamois, M.Sc., P.Geo., is the Qualified Person as defined by NI 43-101 standards responsible for reviewing and approving the technical disclosures of this presentation.**

# Strathy Gold Project – Temagami Greenstone Belt



## ABITIBI SUBPROVINCE

- Most prolific Gold region in Canada
- Access to labour & mining expertise
- Excellent infrastructure
  - TransCanada Hwy runs through Property
  - Proximity to mines & mills

## GOLD

- ▲ Producing Mine
- ▲ Past Producer
- ▲ Developed Prospect with Reserves

## NON-GOLD

- ★ Producing Mine
- ☆ Past Producer
- △ Developed Prospect with Reserves
- Fault: Major, Minor



# Red Cedar Discovery Area

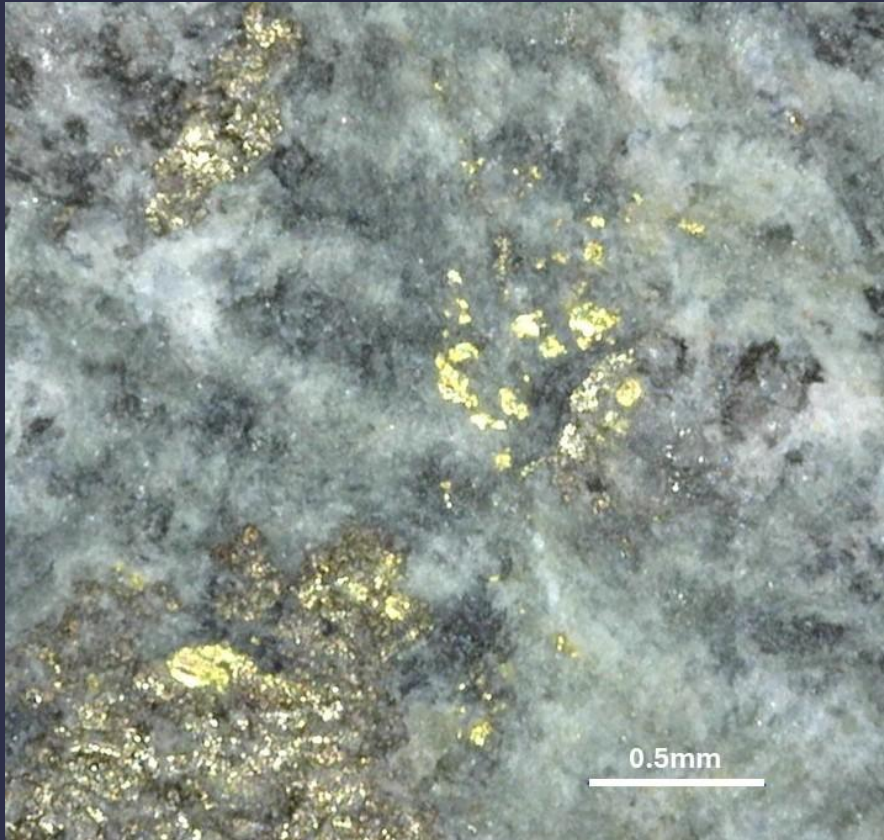


## RED CEDAR DISCOVERY AREA

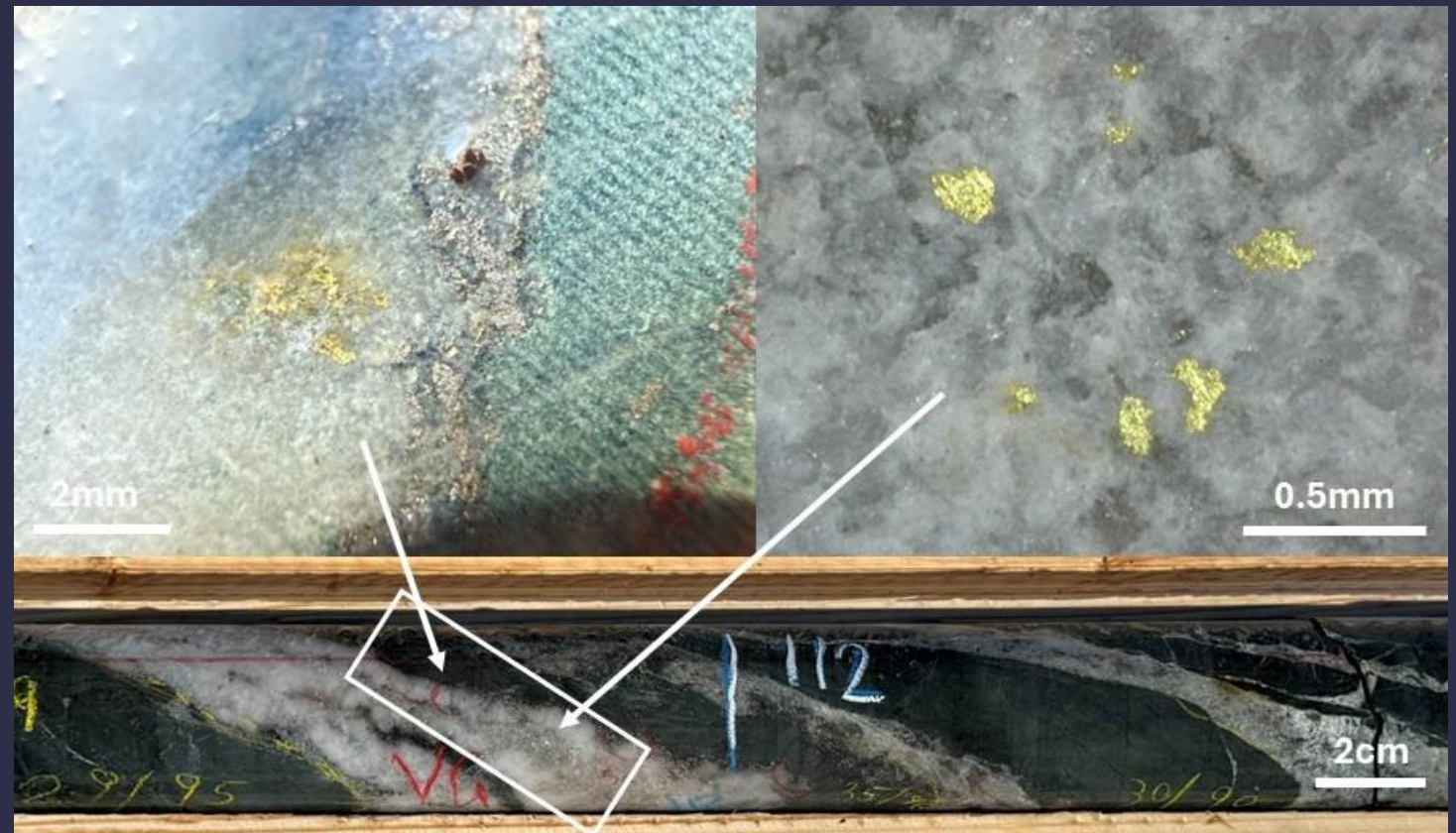
8.52g/t Au over 3.5m including 28.7 g/t Au over 1.0m (SGPDH25-09)

- 59.60 g/t Au over 0.5m, **vg** (SGPDH26-04)
- 25.10 g/t Au over 0.6m, **vg** (SGPDH26-11)
- 8.37 g/t Au over 0.4m, **vg** (SGPDH26-11)

Visible gold in SGPDH26-04 (approx. 8.1m downhole)



Visible gold in SGPDH26-04



# Red Cedar Discovery Area



## POLYMETALLIC TARGET

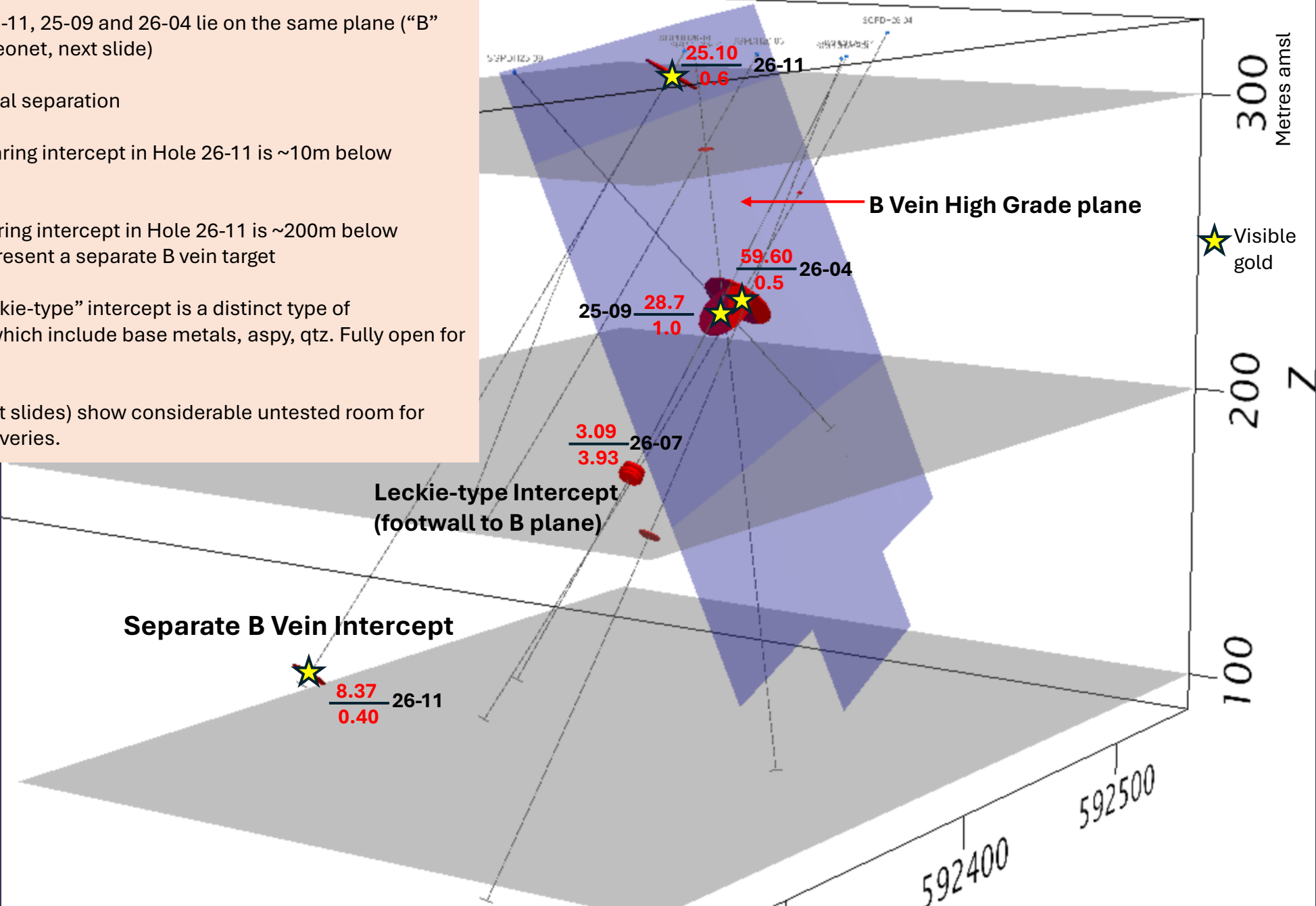
“Leckie-type“: 3.09 g/t Au, 20.80 g/t Ag, 0.88% Zn and 0.27% Pb over 3.83 m

600m from historic Leckie Gold Zone, which includes historic intercepts of 5.00 g/t Au over 17.28 m and 7.66 g/t Au over 7.25 m on SGC claims



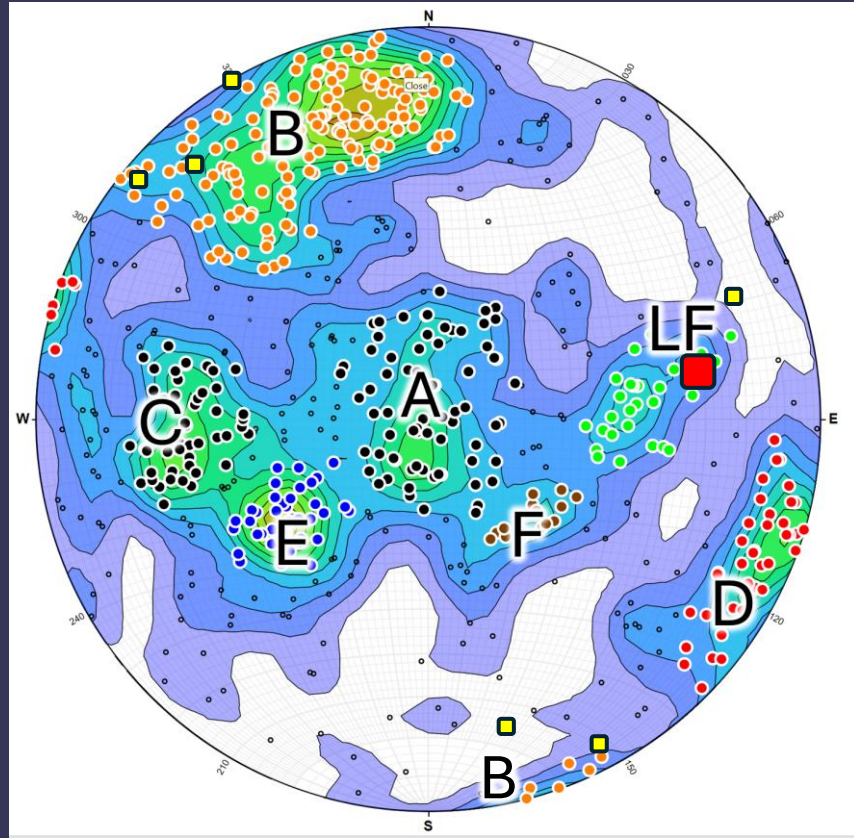
# Isometric looking NE showing key intercepts

- Shallow Hole 26-11, 25-09 and 26-04 lie on the same plane (“B” veins – see Stereonet, next slide)
- 72 meters vertical separation
- Shallow v.g.-bearing intercept in Hole 26-11 is ~10m below surface
- Deeper v.g.-bearing intercept in Hole 26-11 is ~200m below surface and represent a separate B vein target
- Hole 26-07 “Leckie-type” intercept is a distinct type of mineralization which include base metals, aspy, qtz. Fully open for follow up.
- Level plans (next slides) show considerable untested room for additional discoveries.



# Oriented Core defines multiple vein sets and improves targeting

Poles to measured veins in oriented drill core  
("LF" = Leckie Fault orientation)



- Strathy regional gold showings
- Leckie Gold Deposit (Koala) ~121 drill holes

- Seven main vein groups recognized in the Red Cedar (RC) area – **over 700 measured veins (i.e. extensive veining)**
- **At RC, high grade (incl. all visible gold) gold is associated with 'B' type veins, as are most regional gold showings**
- Other vein types also contain gold at RC
- "LF" veins have Leckie Fault orientation (host to Leckie Gold Zone – 121 holes\*)
- **Solstice 26-07 hole has Leckie-type intercept in new target intercept (3.09g/t Au, 20.80g/t Ag, 0.88% Zn and 0.27% Pb over 3.83m)**
- Oriented vein data can be used to guide exploration and targeting





\*Ontario Assessment files

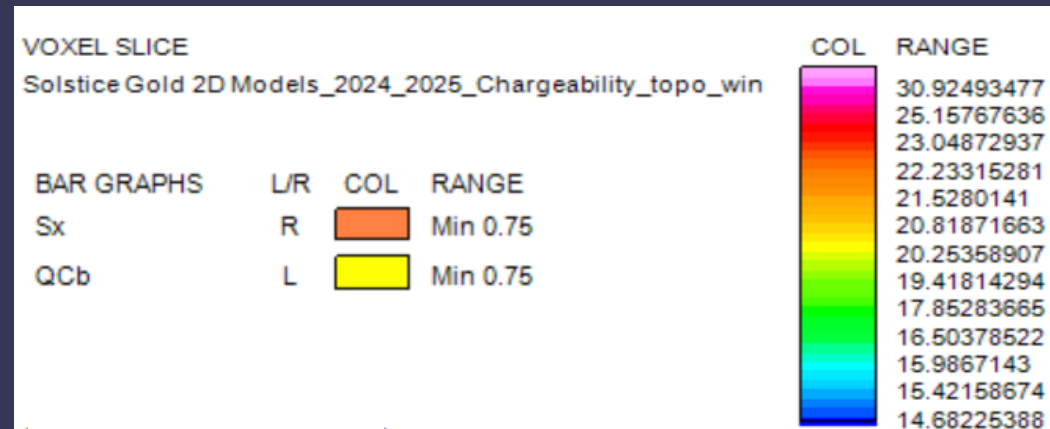


# 25m (+/- 12.5 metre levels plans 300 masl to 125 masl)

## KEY TO LEVEL PLANS

### Oriented Core Vein Measurements

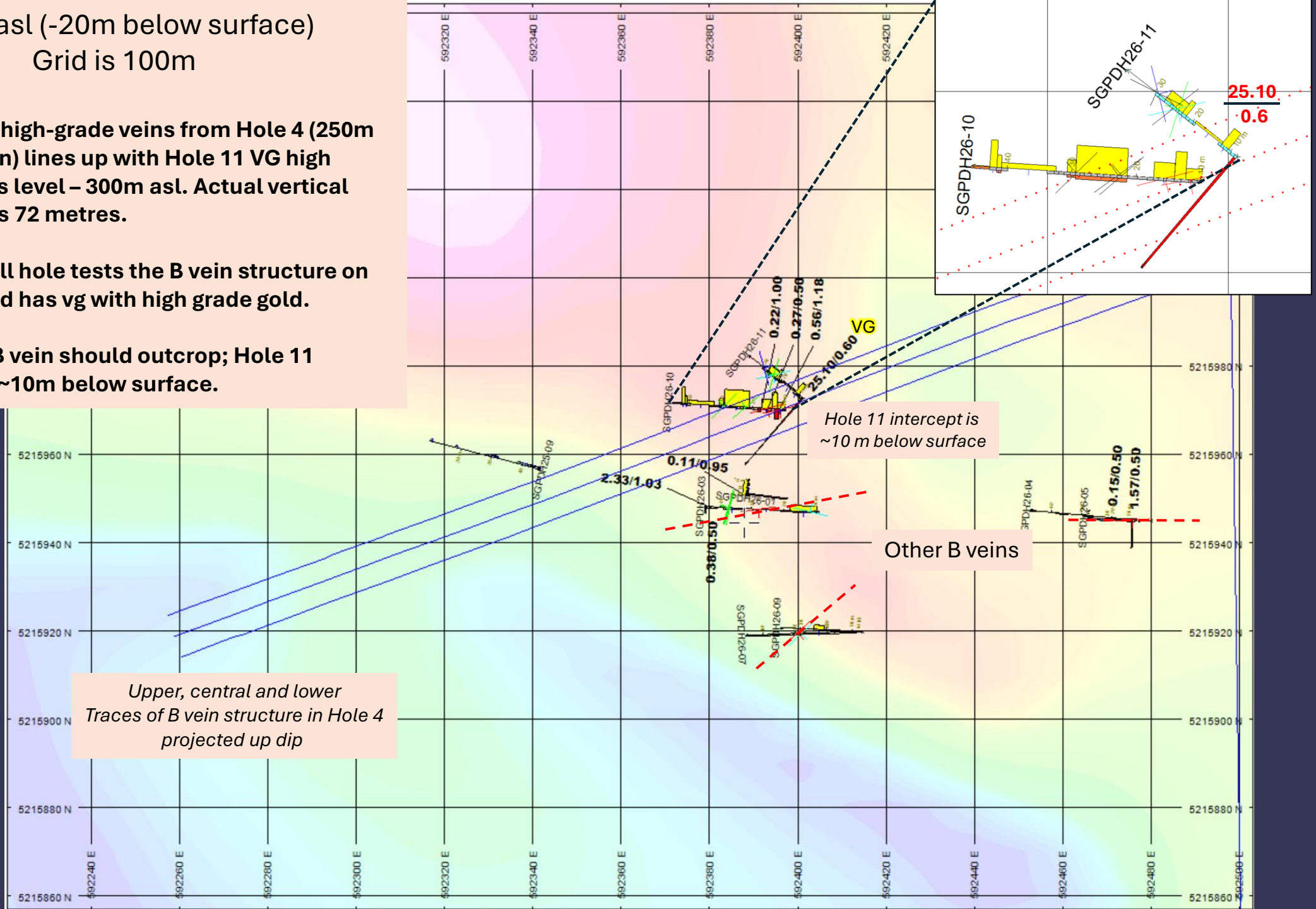
-  B Veins
-  C Veins
-  D Veins
-  E Veins
-  F Veins
-  LF Veins



300m asl (-20m below surface)

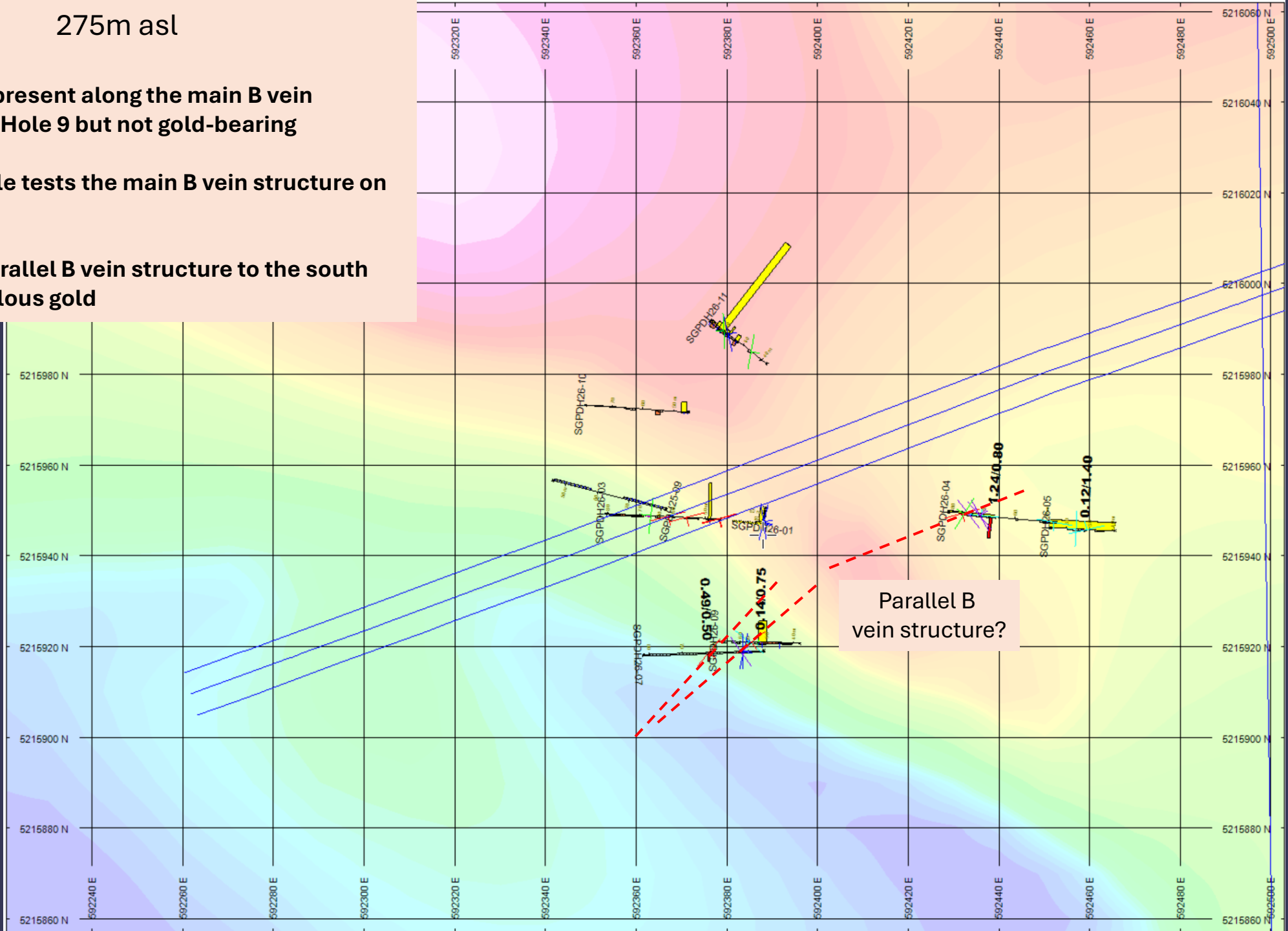
Grid is 100m

- Trace of the high-grade veins from Hole 4 (250m asl level plan) lines up with Hole 11 VG high grade on this level – 300m asl. Actual vertical separation is 72 metres.
- Only one drill hole tests the B vein structure on this level and has vg with high grade gold.
- High grade B vein should outcrop; Hole 11 intercept is ~10m below surface.



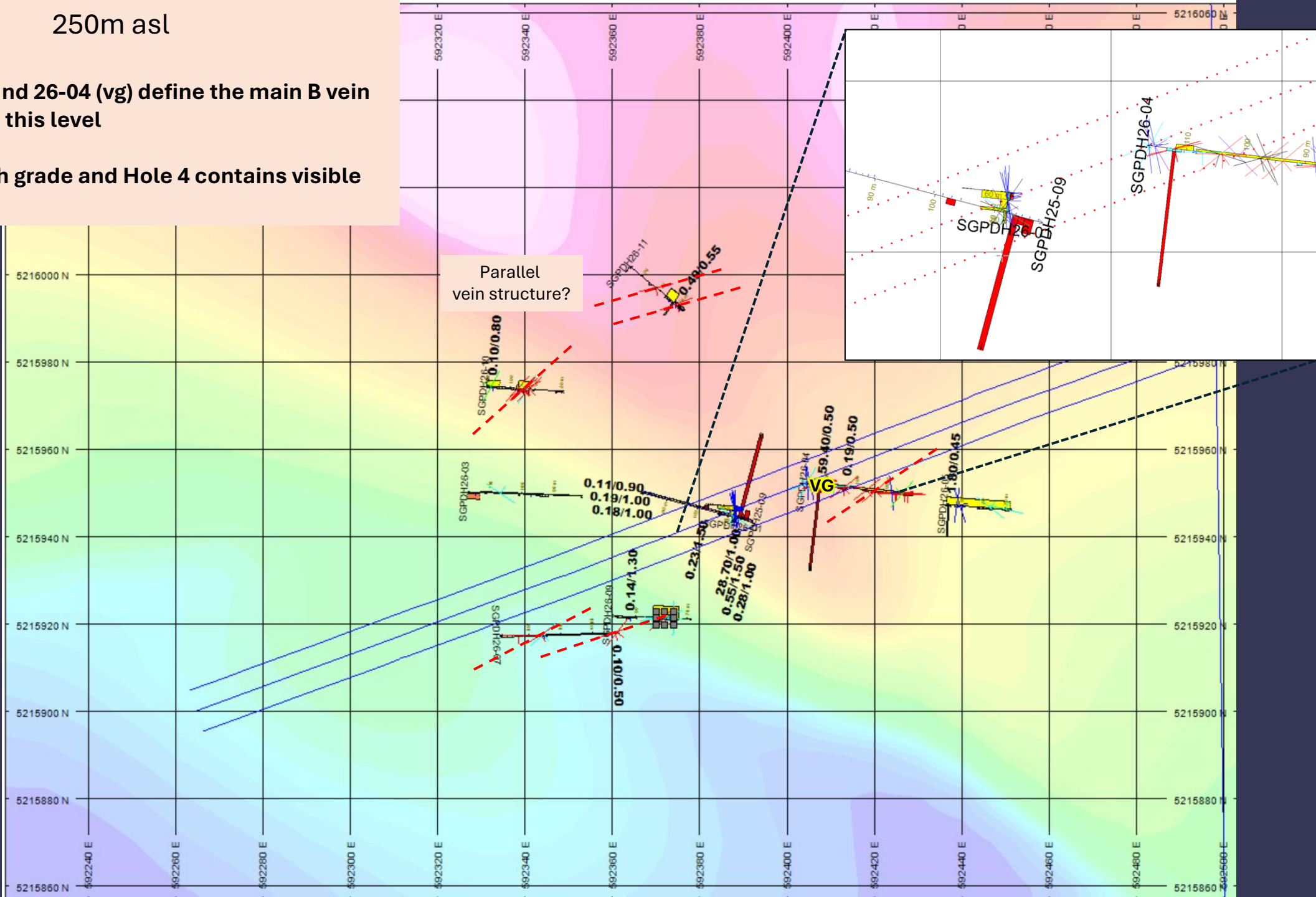
275m asl

- **B veins are present along the main B vein structure in Hole 9 but not gold-bearing**
- **No other hole tests the main B vein structure on this level**
- **Potential parallel B vein structure to the south with anomalous gold**



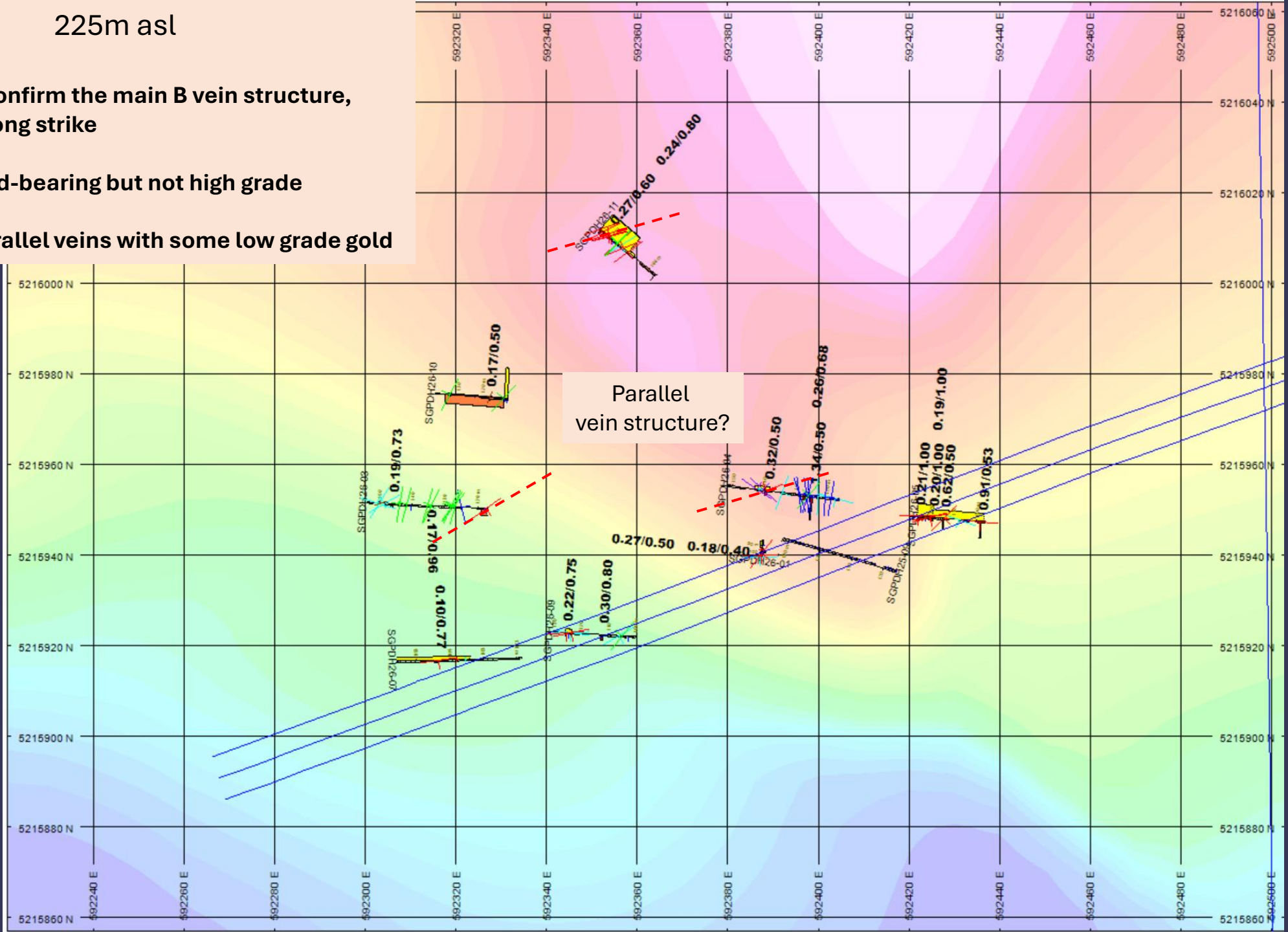
250m asl

- Hole 25-09 and 26-04 (vg) define the main B vein structure on this level
- Both are high grade and Hole 4 contains visible gold



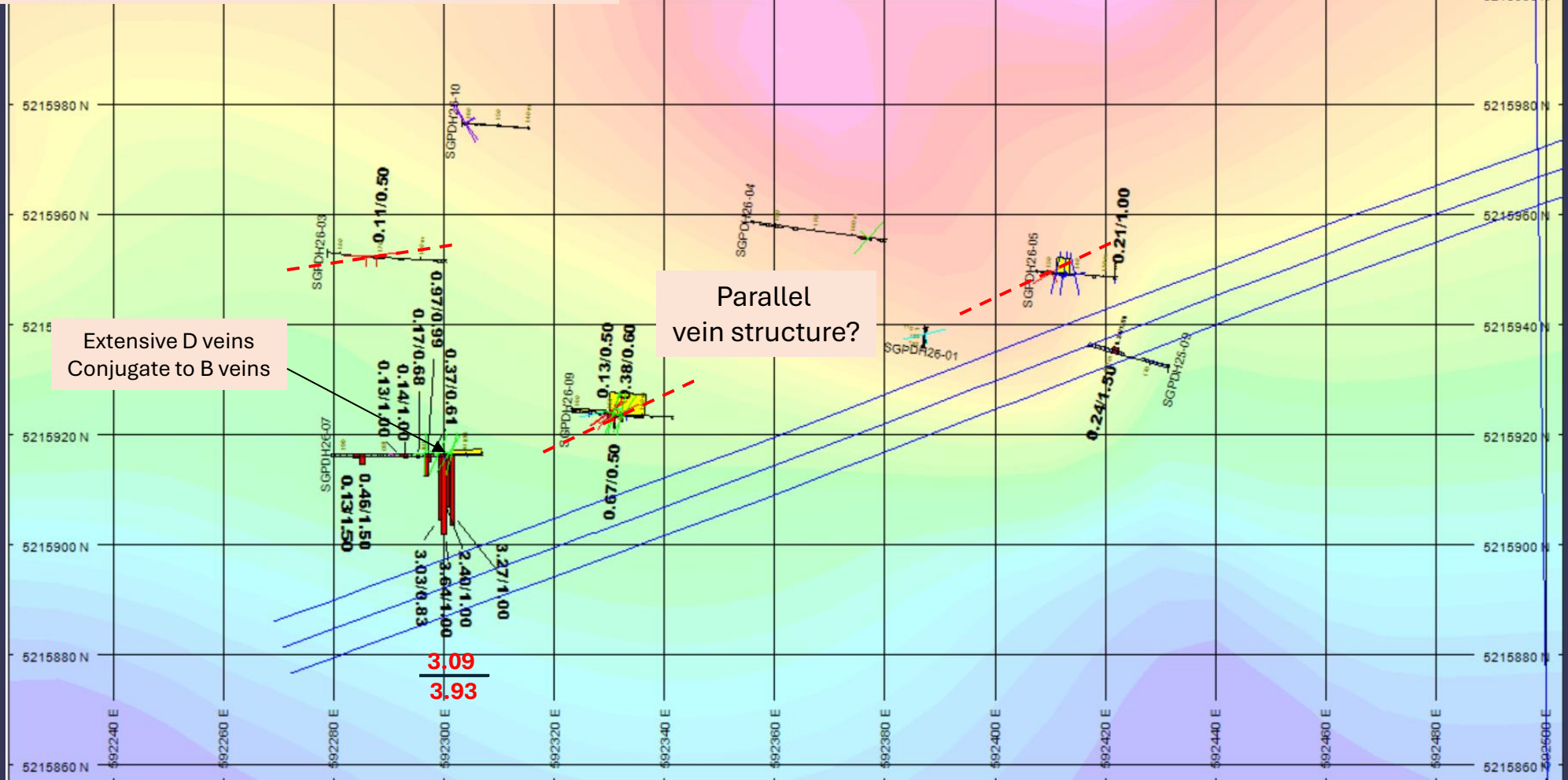
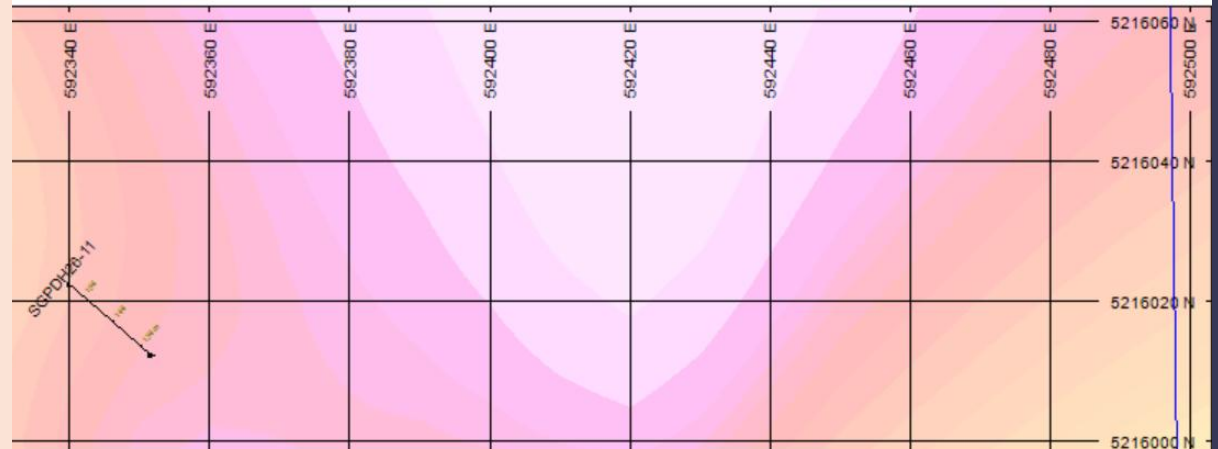
225m asl

- Two holes confirm the main B vein structure, untested along strike
- Both are gold-bearing but not high grade
- Possible parallel veins with some low grade gold



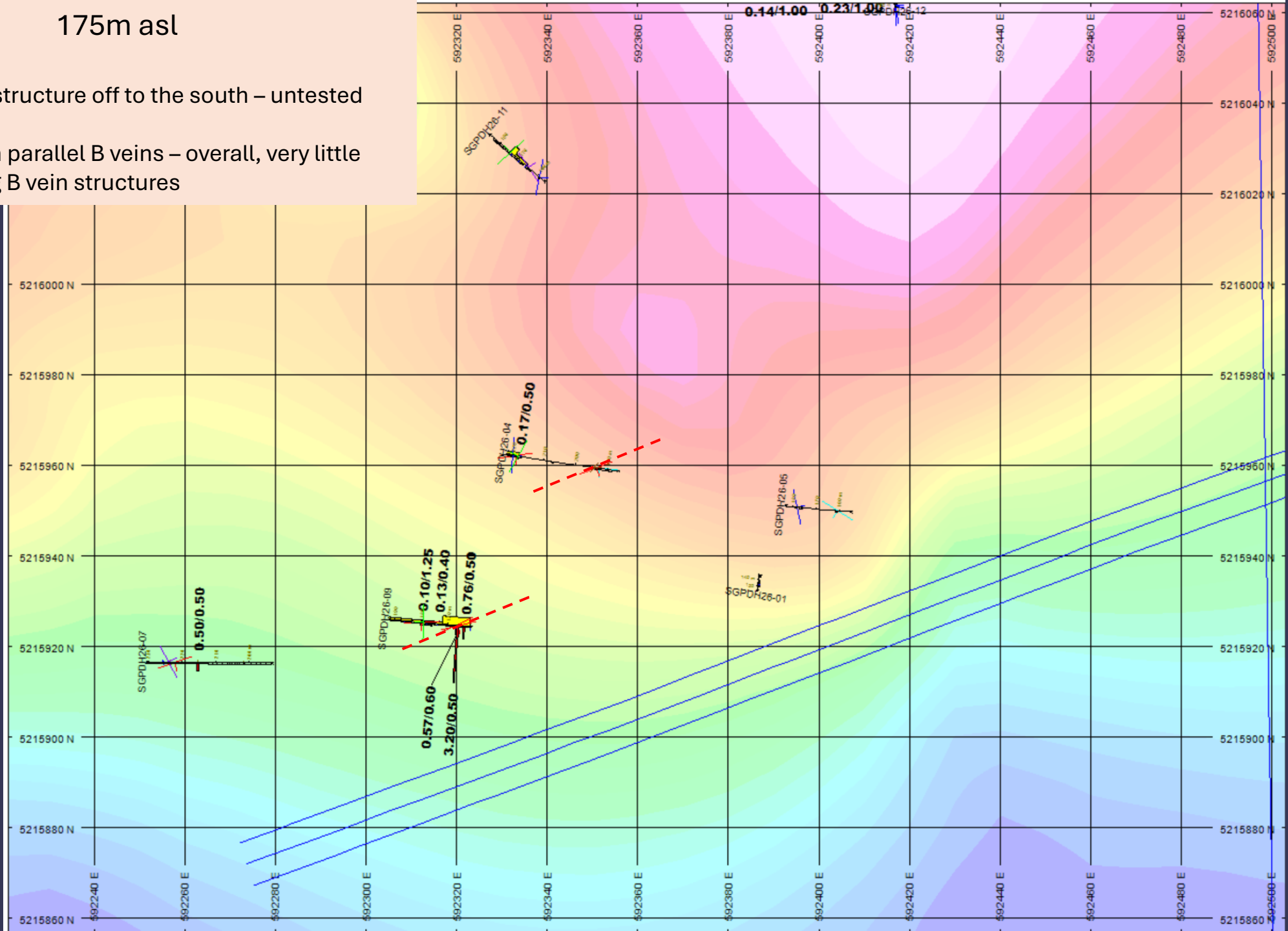
200m asl

- One hole tests the main B vein target which is moving south to depth
- Hole hits Leckie type target, has D veins which would imply NE strike but base-metal q-veining resembles Leckie-type which would be NW striking – open for follow up



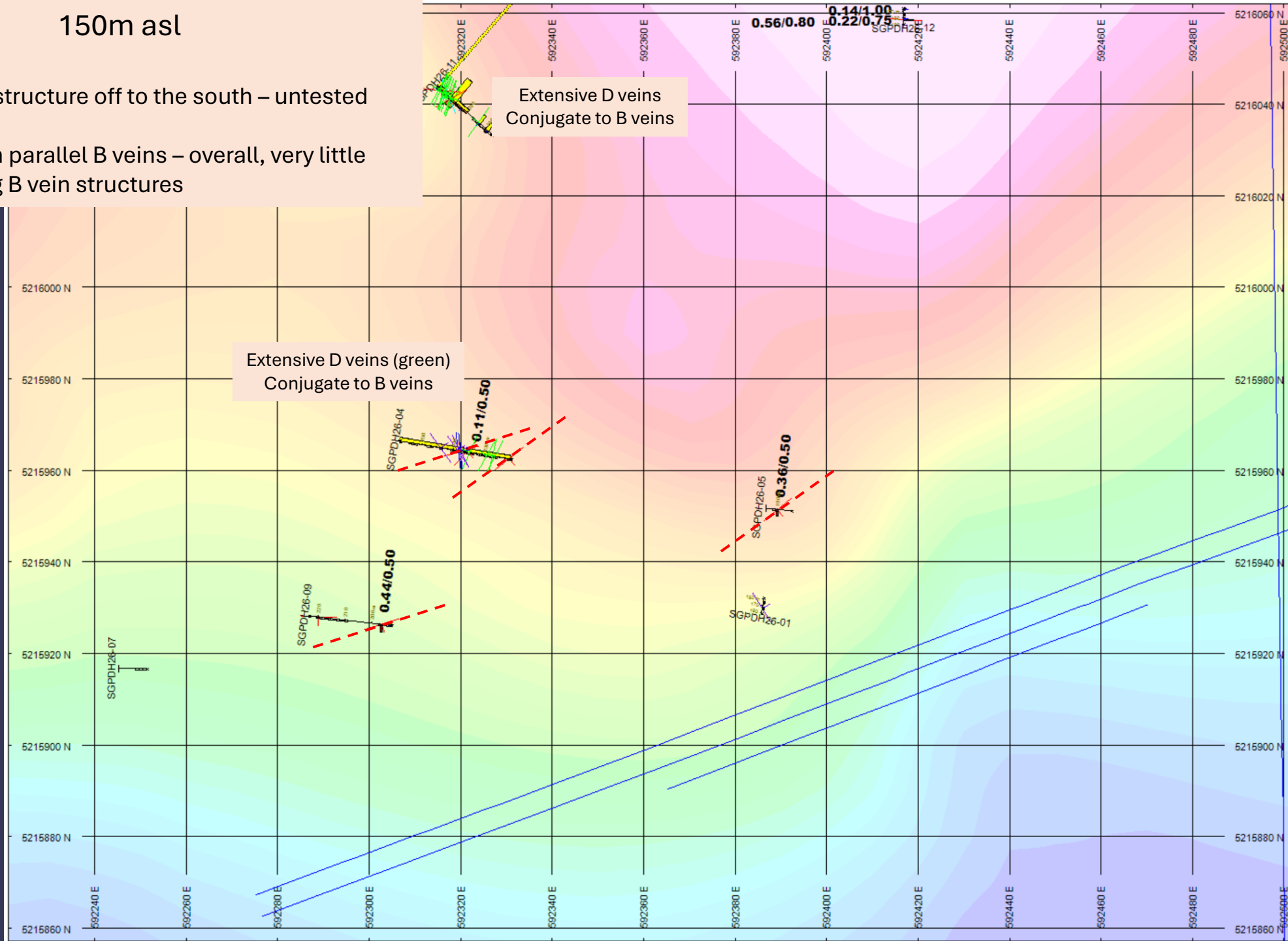
175m asl

- Main B vein structure off to the south – untested
- Some gold in parallel B veins – overall, very little drilling along B vein structures



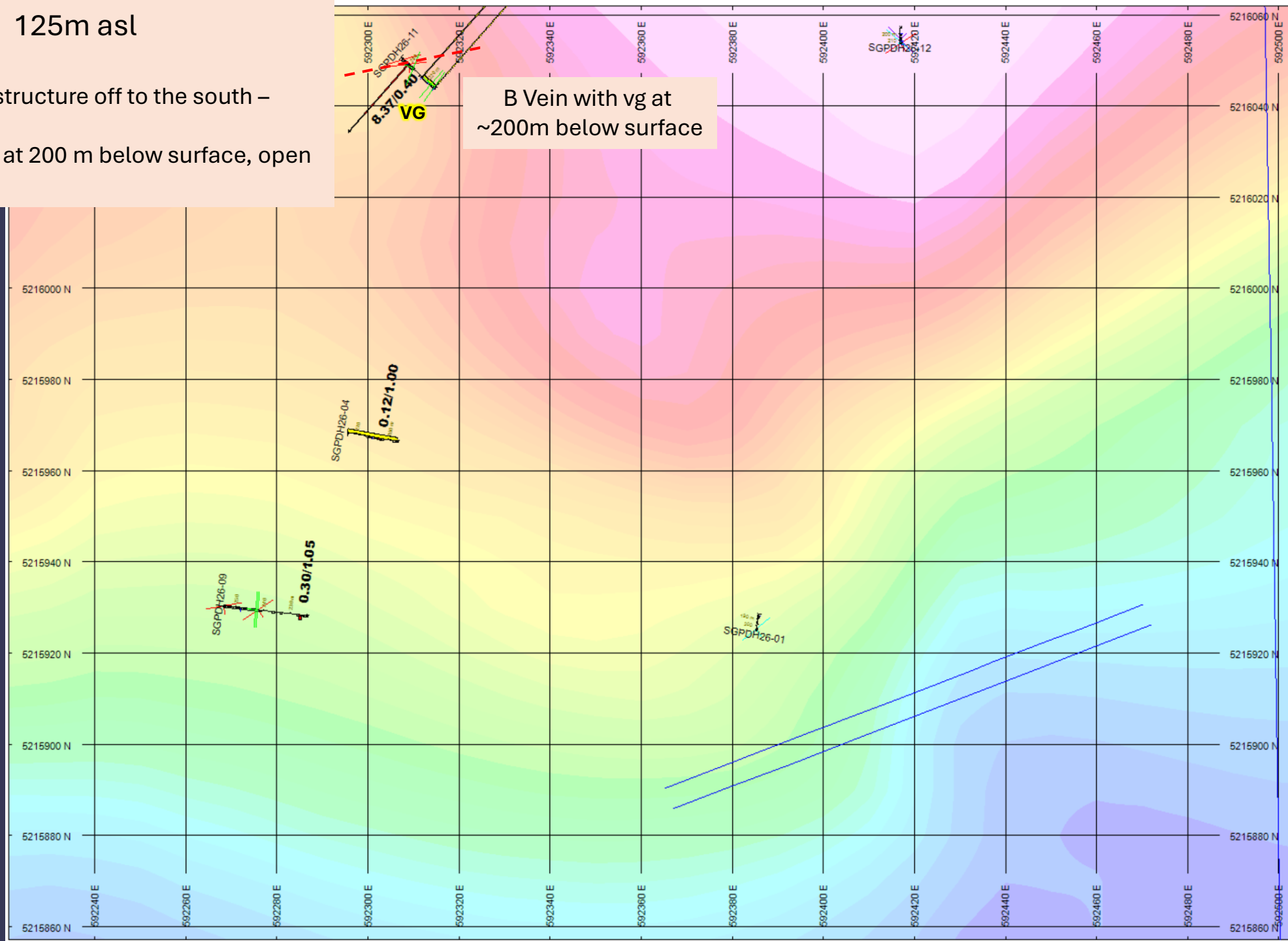
150m asl

- Main B vein structure off to the south – untested
- Some gold in parallel B veins – overall, very little drilling along B vein structures



125m asl

- Main B vein structure off to the south – untested
- V.g. in B vein at 200 m below surface, open target



B Vein with vg at  
~200m below surface

SGPDPH26-04  
0.12/1.00

SGPDPH26-09  
0.30/1.05

SGPDPH26-01

SGPDPH26-11  
8.37/0.40  
VG

SGPDPH26-12